

This Open Meeting of the Board of Trustees is authorized in accordance with the Texas Government Code, §§ 551.001 through 551.146. Verification of Notice of Meeting and Agenda are on file in the Office of the Chancellor. Per Texas Government Code § 551.1282.

**REGULAR VIRTUAL MEETING
OF THE BOARD OF TRUSTEES FOR THE
DALLAS COUNTY COMMUNITY COLLEGE DISTRICT
AND RICHLAND COLLEGIATE HIGH SCHOOL**

via Webex US Toll: 1-415-655-0003, Access code: 285 037 305

Tuesday, April 7, 2020

4:00 PM

AGENDA

THIS MEETING IS BEING HELD BY VIDEO CONFERENCE PURSUANT TO THE AUTHORITY GRANTED BY GOVERNOR ABBOTT'S ORDER DATED MARCH 16, 2020 TEMPORARILY SUSPENDING CERTAIN REQUIREMENTS OF THE OPEN MEETINGS ACT TO PERMIT VIDEO CONFERENCE AND/OR TELEPHONIC BOARD MEETINGS.

1. Roll Call - Announcement of a Quorum

2. Certification of Notice Posted for the Meeting

3. Chancellor and Board Announcements

(Comments on Accomplishments; Awards Received; Appointments at the Local, State, and National Level; Published Articles and Newspaper Reports; District/College Reports/Metrics, and Upcoming Events; Workshops, Seminars, and Conferences taking place at the District or any of its Colleges)

A. Announcements from the Chancellor

B. Announcements from the Board Chair and/or Trustees

4. Discussion on Temporarily Postponing Board Committee Meetings (WebEx Poll)
5. Update on COVID-19 Pandemic and Rapid Response Team
6. Opportunity for Members of the Board and Chancellor to Declare Conflicts of Interest Specific to this Agenda 5
7. Consent Agenda
(Consent Agenda items may be approved by a single motion and vote or, alternatively, upon request of a Trustee(s); any listed item can be removed and considered individually.)

A. Minutes

- 1) March 3, 2020 Regular Meeting Minutes 6
- 2) March 16, 2020 Special Called Emergency Telephonic Meeting Minutes 11

B. Policy Items

- 1) Approval of Amendments to Policies Concerning Academic Achievement – EGA (LOCAL) 18

C. Financial Items

- 1) Approval of Educational Agreement Between the Dallas County Community College District (DCCCD) and Amazon.com Services, LLC 22
- 2) Approval of Agreement for Water and Wastewater Easements with the City of Dallas at Richland College 24

D. Resolutions

- 1) Adoption of Resolution Postponing the May 2, 2020 Dallas County Community College District Board of Trustees Election 60

8. Informative Reports

- A. 2nd Quarter Investment Transactions 65

- B. Quarterly Budget Book Vendor Summary 72

- C. Current Funds Operating Budget Report for February 2020 75

- D. Monthly Award and Change Order Summary 78

- E. Facilities Management Reports 82

- F. Contracts for Educational Services 83

- G. Talent: Resignations and Retirements 85

- H. Workforce Demographics 87

- I. Workforce Demographics by Salary Range 95

9. Citizens Desiring to Address the Board

10. Executive Session (if required)

- A. Consultation with Attorney Regarding Legal Matters or Pending and/or Contemplated Litigation or Settlement Offers - Section 551.071

B. Personnel Matters Relating to Appointment, Employment, Evaluation, Assignments, Duties, Discipline, or Dismissal of Officers or Employees - Section 551.074

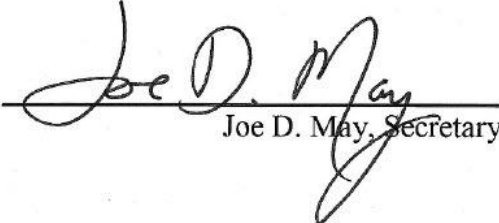
C. Deliberate Regarding Real Property Since Open Deliberation would have a Detrimental Effect Upon Negotiations with a Third Person - Section 551.072

D. Deliberate Regarding Security Devices or Security Audits- Sections 551.076 and 551.089

11. Adjournment

CERTIFICATION OF NOTICE POSTED FOR THE APRIL 7, 2020 REGULAR VIRTUAL MEETING OF THE DALLAS COUNTY COMMUNITY COLLEGE DISTRICT AND RICHLAND COLLEGIATE HIGH SCHOOL BOARD OF TRUSTEES

I, Joe D. May, Secretary of the Board of Trustees of the Dallas County Community College District, do certify that a copy of this notice was posted on the 3rd day of April 2020, 1) in a place convenient to the public in the District Office Administration Building, 2) to John F. Warren, County Clerk of Dallas County, Texas, and 3) on the bulletin board at the George Allen, Sr. Courts Building, all as required by the Texas Government Code §551.054.


Joe D. May, Secretary

6. OPPORTUNITY FOR MEMBERS OF THE BOARD AND
CHANCELLOR TO DECLARE CONFLICTS OF INTEREST SPECIFIC
TO THIS AGENDA

Texas Local Government Code, Chapter 176, provides that local government officers shall file disclosure statements about potential conflict(s) of interest in certain defined circumstances. “Local government officers” are the chancellor and trustees. The penalty for violating Chapter 176 accrues to the chancellor or trustee, not to DCCCD.

Names of providers considered and/or recommended for awards in this agenda appear following this paragraph. If uncertain about whether a conflict of interest exists, the Chancellor or Trustee may consult with DCCCD General Counsel Robert Wendland.

Amazon.com Services, LLC
City of Dallas

CONSENT AGENDA NO. 7A-1

Approval of Minutes of the March 3, 2020 Regular Meeting

It is recommended that the Board approve the minutes of the March 3, 2020 Regular Meeting.

The Board of Trustees of Dallas County Community College District held a Regular Board Meeting on Tuesday, March 3, 2020, beginning at 4:50 p.m. in the lower level, room 007. This meeting was convened by Chair Diana Flores.

Board Members and Officers Present

Ms. Monica Lira Bravo
Ms. Charletta Rogers Compton
Ms. Diana Flores (chair)
Mr. Wesley Jameson (vice chair)
Dr. Joe May (secretary and chancellor)
Mr. JL Sonny Williams
Ms. Dorothy Zimmermann

Members Absent

Mr. Phil Ritter

1. **Certification of Notice** posted for the meeting by Chancellor Joe May.
2. **Pledges of Allegiance** to U.S. and Texas Flags were recited.
3. **Special Presentation: Association of Community College Trustees' 2020 National Legislative Summit**
Comments by Executive Vice Chancellor Justin Lonon, Chief Legislative Officer Isaac Faz, Vice Chair Wesley Jameson and Trustee Monica Lira Bravo
Featuring Student Delegates Daniela Contreras (El Centro College), Natalie Hargus (El Centro College), Sam Mathew (Richland College) and Brandon Valdez (Brookhaven College)
 - Isaac Faz, Justin Lonon and student delegates recounted their positive experiences at the Washington DC for the legislative summit.
 - Chair Flores thanked the students and the staff who attended.

4. Citizens Desiring to Address the Board

None.

5. Chancellor and Board Announcements

(Comments on Accomplishments; Awards Received; Appointments at the Local, State, and National Level; Published Articles and Newspaper Reports; District/College Reports/Metrics, and Upcoming Events; Workshops, Seminars, and Conferences taking place at the District or any of its Colleges)

A. Announcements from the Chancellor

- Chancellor May attended the National Technical Letter of Intent signing day at Cedar Valley College on February 20, and thanked Trustee Compton and Vice Chair Jameson for their motivating remarks to students.
- Dr. May recognized Cedar Valley College who was recently recognized at the CASE conference. CASE is the association for community college and university fund-raisers and advancement and work with foundations and donors. Cedar Valley College received an award for their Institutional Identity Program and Specialty & Print Advertising projects.
- Dr. May spoke about preparations being made in regard to the COVID 19 virus. The District was preparing and communicating with Dallas County Health and Human Services to monitor any local transmissions. Dr. May asked Brigham Wilcoxson of Emergency & Risk Management and Chief Lauretta Hill to comment on the situation. Janitorial vendors were contacted to ensure they were following protocols. The Emergency Management Plan was updated so that employees have accurate and reliable information.
- Dr. May added we would be in contact with the Coordinating Board if campuses needed to shut down for a period of time. Trustee Compton asked if students and staff were being observed to determine if they were exhibiting actions that would be questionable in terms of the spread of the virus and were, they being proactive as far as sanitizing efforts.
Rob Wendland answered that Legal was working collaboratively with Talent Central to develop procedures so information would be sent out to students and staff. They were utilizing guidance from the Dallas County Health and Human Services and the CDC so people knew what to look for as far as symptoms. Wendland added that emergency procurement provisions in times of a crisis allowed the

District to acquire necessary supplies such as cleaning aids and personal protection equipment.

- Trustee Compton asked if teleconferences were being discussed. Rob answered yes, they were considering that operations may need to change of their own determination or may even be directed by an agency to take a certain action. There were emergency procurement provisions in times of a crisis that allow the District to go out and acquire things that were needed such as cleaning aids and personal protection equipment.

B. Announcements from the Board Chair and/or Trustees

- Vice Chair Jameson commented that the legislative session was an important student experience and added that they really made the Board proud with their stories and participation.
- Trustee Compton requested a letter from the Board supporting these priorities.
- Chair Flores agreed with recommendation and directed appropriate staff to follow up.

6. Opportunity for Members of the Board and Chancellor to Declare Conflicts of Interest Specific to this Agenda

7. Consent Agenda

(Consent Agenda items may be approved by a single motion and vote or, alternatively, upon request of a Trustee(s); any listed item can be removed and considered individually.)

Trustee Bravo moved and Vice Chair Jameson seconded the motion to approve Items A1 and A2, B1 and B2, C1, D1 and E1 through E6. The motion was approved and passed unanimously.

A. Minutes

- 1) February 4, 2020 Work Session Minutes
- 2) February 4, 2020 Regular Meeting Minutes

B. Policy Items

- 1) Approval of Amendments to Policies Concerning Duties of the Board and the Chancellor – BFA1 (LOCAL)
 - Trustee Compton asked Wendland to review BFA1 because wording was confusing. Legal agreed and would be bring it back as a future agenda item.

- 2) Approval of Amendments to Policies Concerning Compensation and Benefits – DEA (LOCAL)

C. Financial Items

- 1) Approval of Lease Agreement with 4315 ESV, LLC for Instructional Space for the Second Chance Workforce Development Program for Returning Citizens

D. Recommendation from Audit Committee

- 1) Approval of McConnell & Jones, LLP as the District's Independent Auditor
 - Trustee Williams reaffirmed the Audit Committee's recommendation. Rob responded that the record would reflect that approval.

E. Resolutions

- 1) Approval to Adopt Resolution Declaring Intention to Reimburse Certain Expenditures with Bond Proceeds
- 2) Approval to Adopt Resolution to Renew Open-Enrollment Charter for Richland Collegiate High School
- 3) Approval to Adopt Resolution to Change the Name of the Dallas County Community College District to Dallas College
- 4) Approval to Adopt Resolution Establishing County Voter Precinct Boundaries for the May 2, 2020 Trustees Election
- 5) Approval to Adopt Resolution Authorizing Joint Election Agreement between Dallas County Community College District, Numerous Public Entities and the Dallas County Elections Department
- 6) Approval to Adopt Resolution Giving Notice of the Trustee Election on May 2, 2020

8. Policy Items - First Reading

A. Approval of Amendments to Policies Concerning Academic Achievement – EGA (LOCAL)

- Trustee Zimmermann asked for clarification in reference to the wording on academic achievement grading and credit, where it talked about semesters. Anna Mays replied that the semester was defined as 16 weeks and that included any term within that such as the 8-week term.

9. Informative Reports

A. Committee Reports

(Committee notes are listed only after they have been reviewed and approved by the committee in question.)

- 1) Education Workforce Committee Notes for November 5, 2019
- 2) Audit Committee Notes for December 3, 2019
- 3) Finance Committee Notes for February 4, 2020
- 4) Chancellor Performance Review Committee Notes for February 19, 2020

B. Current Funds Operating Budget Report for January 2020

C. Monthly Award and Change Order Summary

D. Facilities Management Reports

E. DCCCD Foundation Report

F. Notice of Grant Awards

G. Contracts for Educational Services

- Trustee Compton referred to 9G, regarding contracts for educational services. She stated there used to be a robust report and the numbers were low on educational training with few contracts. She asked Justin Lonon regarding the establishment of the Ascend Institute. Lonon responded that contract training was being reviewed to see how it would best fit under the new One College structure. Chair Flores asked for future follow up and updates on the project.

H. Talent Report - Resignations, Retirements and Terminations

I. Workforce Demographics

J. Workforce Demographics by Salary Range

10. Executive Session

None.

11. Adjournment

Regular Meeting adjourned at 5:26 p.m.

Captioned video and transcripts for DCCCD Board Committee Meetings, Work Session and Regular Board Meetings are available at our website, www.dcccd.edu/boardmeetingslive, under the Archived Videos section.

CONSENT AGENDA NO. 6A-2

Approval of Minutes of the March 16, 2020 Special Called Emergency Telephonic Meeting

It is recommended that the Board approve the minutes of the March 16, 2020 special called emergency telephonic meeting.

The Board of Trustees of Dallas County Community College District held a special called emergency telephonic meeting on Monday, March 16, 2020, beginning at 11:00 a.m. via WebEx software, a telephonic and virtual platform.

Board Members and Officers Present

Ms. Monica Lira Bravo
Ms. Charletta Rogers Compton
Ms. Diana Flores (chair)
Mr. Wesley Jameson (vice chair)
Dr. Joe May (secretary and chancellor)
Mr. Phil Ritter
Mr. JL Sonny Williams
Ms. Dorothy Zimmermann

Members Absent

None.

1. **Call to Order** by Perla Molina.
2. **Roll Call** - Announcement of a Quorum was conducted by Perla Molina.
3. **Declaration of an emergency and urgent public necessity within the meaning of Texas Government Code Section 551.045 related to the impact of COVID-19 pandemic and need to not gather or congregate for purposes of a public meeting.**

Formal Declaration of Emergency Meeting was read by Rob Wendland. He stated that under the authority granted to him under applicable law and Board policy, he would take any and all actions and implement such procedures as necessary to deal with the emergency situation.

4. **Update on COVID-19 Pandemic and Operational Educational Planning in connection with same.**

Presenter: Joe May

A. Welcome and Update – Joe May

Dr. May thanked IT for their assistance. Dr. May stated that he had been in contact with Harrison Keller, the Commissioner of Higher Education, local superintendent Michael Hinojosa, Judge Clay Jenkins, Mayor Eric Johnson and others, as they work to best coordinate operations in these extraordinary circumstances. The District was considering extending spring break and moving classes online for the remainder of the term. The District was not alone as they looked at the impact of such measures.

Leadership coordinated with area high schools where students are enrolled in college level classes, as this could impact their ability to graduate from high school. The District was working with its partners to ensure food was available, as well as other resources.

This severe public health crisis would test the District's ability to meet the many needs of its students. Leadership was working with both federal and state governments, monitoring very carefully the requirements under the federal disaster declaration. There would have to be a substantial monetary investment in order to transition all our employees to be able to work from home remotely, as well as transition students to access all current courses online.

Leading into the academic update, Dr. May described to the Board how clinical students and hospitals were handling training, as well as operations and protocol of area hospitals in the handling of the COVID-19 situation.

B. Academic Preparation Update – North Lake President Christa Slejko

Dr. Slejko explained that there was a lot of input from faculty regarding the delivery of online courses remotely and Blackboard was the easiest platform to use. Faculty would be reaching out to students via email and phone to help them finish their classes and discuss any individual student needs. Staff have been identifying various means of instruction and were in close contact with business partners who deliver training.

- Trustee Williams asked if she referred to mostly credit courses or also continuing education and workforce courses, as well. Slejko said that her discussions comprise both.
- Chair Flores asked about ESL classes. Slejko answered that those classes were included in her conversations with faculty who were also reaching out to ESL students.

C. Academic Preparation Update – Mountain View President Beatriz Joseph

Dr. Joseph followed up with faculty who were doing peer-to-peer training to facilitate the transition to online course delivery. Her team was working to find

alternatives to face-to-face labs; nursing faculty came up with a comprehensive plan to meet the guidelines of their accrediting body. Other courses, such as physical therapy, would explore alternatives to meet clinical hours. On the continuing ed side, instructors were working with ESL students to ensure they received necessary instruction.

- Trustee Ritter was unfamiliar with Blackboard and asked for a quick outline of its capabilities from a student-teacher perspective. Dr. May explained that Blackboard is the current platform used districtwide. Trustee Ritter asked what role, if any, the LeCroy Center would play during the transition to tele-education. Dr. May answered that, although their involvement had been mostly external, they have meetings scheduled to talk about planning for the future in the online space.
- Trustee Ritter asked the estimated number of students that did not have readily available online access and might need accommodations. Dr. May responded that, although we didn't have a clear answer, Tim Marshall was prepared for discussions about this from a budget point-of-view.

D. P-Tech/ECHS/Dual Credit Update - Anna Mays

Mays stated that P-Tech and area public and charter schools intended to stay open as long as possible. In the event of closure, they would have faculty provide online instruction and support. Mays was being kept up to date as to changes and requirements. Leadership was doing their best to ensure that students complete their associate degrees on schedule.

E. Communications Update - Patty Arellano-Tolotta

Arellano-Tolotta said a public website is being updated frequently with traveling prevention guidelines, as well as links to external resources like the CDC and a growing list of frequently asked questions relating to students, faculty and staff. SharePoint continues to be a source of information. The marketing team was in the process of setting up a remote working toolkit for staff and faculty. Multiple emails and newsletters had been sent to employees and students.

- Trustee Ritter asked what kind of questions they were hearing from students through various channels. Tolotta replied that the biggest question had been when DCCCD was going to close. Dr. May stated that information would be constantly changing and revised based on what was happening at federal, state and local levels. Leadership was sensitive to CDC recommendations such as ensuring social distancing and outlined the following recommendations:
 1. Officially extend spring break for students through March 29, shifting to online remote operations, resuming on March 30 through April.
 2. Operations would be limited during transition. Identify and maintain

essential services and ensure social distancing. There were no reported cases of COVID-19 among students or staff, but the situation was being closely monitored.

3. Faculty was provided with training resources and staff was contacting students to determine their ability to work online.
 4. There was increased guidance relating to employees over 65 and others who may be primary caregivers for elderly parents or family members.
 5. Each college would work with supervisors to develop a plan for each employee to provide technology to those who would be working remotely. Tutoring and computer labs would need to incorporate use of video conferencing.
 6. Facilities would be closed to the general public; employees would need to show their DCCCD ID to be allowed on campus to gather necessary materials to be able to work from home.
 7. Full and part-time staff would continue to be paid as identified by their supervisor, however, some functions would need to be evaluated.
 8. All campus events scheduled through April 15 would be postponed. Decisions would be made regarding commencements at a later date.
- Trustee Ritter asked if it was possible to maintain the computer labs for students who don't have access to remote instruction, keeping appropriate social distancing. Dr. May answered that this was the plan, but in limited facilities and labs.

F. Employee Update - Rob Wendland

Wendland updated the Board on employee matters. As directives were changing from moment to moment, the District is very sensitive to the needs and concerns of employees in such uncertain times. Under consideration, was the closing or partial closing of facilities in the scenario of operating with less than a complete complement of employees during a period of time.

The District would adhere to any and all directives and mandates that were received at the federal, state and local levels, but would continue to be sensitive to the employees who supported the mission to educate our students. Working from home was a big concern. Leadership was looking at practices to ensure that employees who could perform work duties at home, had the resources needed. All employees would continue to be compensated until alternatives were further assessed. In regards to the pending Family First Act, the District was not obligated under that act due to the number of employees we had, but the intention was to continue to afford compensation to employees and that the leave policy met their needs at least for a limited duration. Many

other considerations were at play, including grants of leave to deal with caregiver situations or if schools closed and there was a need for home childcare. Leadership would also look at flexible schedules, rotating schedules, working from home and all the possible options to meet the needs of employees.

Dr. May pointed out that the considerations being taken were consistent with existing policies, procedures and practices, and in taking these actions, the District ensured continuity of business, as much as possible. This was not business as usual and some inconsistencies may occur. Wendland added that flexibility was necessary with respect to existing statutes and regulations, as these rules didn't contemplate everything the District was dealing with at this time.

- Trustee Ritter asked what major state and federal decisions would affect the District and what potential dollar amounts were associated. Dr. May pointed out that this declaration of national disaster was unprecedented. Leadership didn't have the internal expertise to manage the emergency requirements of the federal government in this case and the district would be looking for outside help to assist in this process. The state had yet to make some decisions that the District had that would impact the next funding period. May specifically requested provisions, given the uncertainty of the next round of funding. John Robertson would be addressing the budget later in the meeting.

Wendland stated, in answer to Trustee Ritter's inquiry, that the governor's resolution declaring a state disaster was the first salvo of what we could expect to see from the governor's office, but they were continuing to review any and all measures that might need to be put into place to assist local governments and state agencies with their obligations to employees and others during this time. The District could expect more to come from the state and federal government. Again, the broad grants of authority to the Chancellor as Chief Executive Order Officer enable him to take all measures necessary for continuity of operation and maintenance of operation during periods of crisis.

Dr. May stated that, while he didn't know what it would take to get through the short run, he's asked Robertson to identify \$20 million that leadership could use to take care of emergency purchases and outsourcing support for some of these areas. This was not in the existing budget. The District needed to spend the necessary dollars to better accommodate students and employees.

G. Budget Update - John Robertson

Robertson provided a financial update. He stated that the district had between \$150,000 to \$175,000 in cash reserves. Leadership was going to set aside some additional funds to support the transition to online remote learning and working; at this point it was undetermined how much that would be. IT was looking at various options but delivery of most laptops would be in mid-April but expected delivery of mobile, tablet, hotspots was closer to two weeks. That's probably a direction the District would have to go in to help with some of these interim pipelines.

- Trustee Ritter asked, since it sounded like the District was going to be investing a lot of money in computers, laptops, technology and other equipment, would all this be inventoried and accounted for over time. Robertson replied, yes.

H. Foundation Update (Emergency Aid) - Pyeper Wilkins

Wilkins gave a Foundation update stating that leadership would be meeting telephonically with the executive committee next Tuesday morning. At that time, the District would be asking them to approve an allocation of a million dollars out of the Foundation, some unrestricted funds and some that would have to be voted on to change requirements. The District would put the million dollars toward emergency aid for our students. The Foundation had launched its Emergency Aid fund in October—a little sooner than originally planned—as a result of the tornadoes that came through Dallas County; which resulted in a significant depletion in certain funds. However, the Foundation had a tremendous partner in a company called Edquity. As students applied online, it took very minimal time. Wilkins understood it took two to three minutes for the student to complete an application, and then the student usually had an answer within 24 hours, and received the funds within 48 hours, directly deposited to their accounts. It was faster response that the Foundation could manage internally. DCCCD Foundation was in partnership, at this point, at no cost because of various grant funding from foundations around the country. A million dollars sounds like a lot of money, but it is not a lot of money in this case. It was what the Foundation could do immediately.

I. Summary - Joe May

Dr. May stated that there would be a number of meetings taking place this week, relative to how to protect K-12 education. There was a business coalition that would be coming together around a group of churches. The District needed to try to plan on doing as much as we possibly could for our employees and students using District resources. He appreciated our Foundation's willingness to step up.

- Vice Chair Jameson asked if there was any action that they, as Trustees, needed to do at this time to give a vote of support for the T-Mobile emergency expenditure that Robertson had mentioned. Dr. May answered the board couldn't vote during this telephonic meeting, but was working with the State Attorney General's office for possible alternatives. Dr. May added that he'd be informing the Board before any Board action took place.
- Trustee Ritter asked if there were any delegations that the Chancellor needed from the Board in order to manage the crisis. Dr. May answered that he believed the Board's authorization, beyond what they had discussed and disclosed today, was not necessary.
- Chair Flores thanked all the attendees for their presence and continued diligence in support of the students and employees.

5. **Executive Session**

None.

6. **Adjournment**

The virtual meeting adjourned at 12:07 p.m.

Captioned video and transcripts for DCCCD Board Committee Meetings, Work Session and Regular Board Meetings are available at our website, www.dcccd.edu/boardmeetingslive, under the Archived Videos section.

POLICY ITEM NO. 7B-1

Approval of Amendments to Policies Concerning Academic Achievement – EGA (LOCAL)

In response to recommendations by the Chief Student Service Officers and Vice Presidents of Instruction for the College District, the Chancellor recommends the following amendments to local policies relating to scholastic standing and academic honors.

Effective Date: Upon Board Approval

<u>LOCAL POLICY</u>	<u>EXPLANATORY NOTES</u>
EGA – Scholastic Standards	Revises policy to clarify the basis for application of a given standard, i.e. “Good Standing,” “Probation One,” “Probation Two,” etc.
EGA – Academic Honors	Changes name of subsection from “Honors” to “Academic Honors,” and revises policy to apply requirements for Academic Honors to the summer semester, as well as the fall and spring semesters.

ACADEMIC ACHIEVEMENT
GRADING AND CREDIT

EGA
(LOCAL)

**Standards of
Performance**

Acceptable
Scholastic
Performance

Acceptable performance, also known as good standing, is based upon the student's grade point average for all attempted courses—~~student progress toward successful course and program completion. The two components used to compute academic standing are~~ GPA(1) [See "Method of Calculation"]~~and course completion~~. Academic standings ~~are~~is computed beginning with the first enrollment. ~~The Chancellor shall develop procedures to positively intervene with students on the levels of academic standards.~~

Scholastic
Standards

Scholastic standards are defined as follows:

1. "Good Standing": A student of the College District, who maintains a cumulative GPA(1) of 2.0 or higher, will earn the good standing standard. ~~The good standing standard is awarded to students maintaining a cumulative GPA(1) of 2.0 or higher and who complete at least one course each semester/session of enrollment at a college of the College District.~~
2. "Probation One": ~~Students who fail to complete at least one credit course in their next semester/session of enrollment and fail to earn a semester/session GPA(1) of at least 2.0 are placed on probation one. Students~~A student who fails to earn at least a cumulative GPA(1) of 2.0 ~~are also for a semester will be~~ placed on probation one. A s~~Students~~ on probation one may have coursework and total number of credit hours limited and may be required to register for specific courses. A ~~Students on probation one must complete at least one credit course in their next semester/session of enrollment and earn a semester/session GPA(1) of at least 2.0. s~~Students on probation one shall remain on probation one until ~~their~~the student's cumulative GPA(1) is 2.0 or higher.
3. "Suspension": ~~Students~~A student on probation one shall be placed on suspension if ~~they~~the student fails to ~~complete at least one credit course in their next semester/session of enrollment and~~ earn a semester ~~/session~~ GPA(1) of at least 2.0. A s~~Students~~ on suspension ~~is~~are ineligible to enroll in credit courses in the next subsequent ~~session~~semester of enrollment (fall semester, spring semester, or summer ~~ses-~~sionsemester).
4. "Probation Two": A Student~~student who iss~~ readmitted after suspension shall be placed on probation two. A s~~Students~~

ACADEMIC ACHIEVEMENT
GRADING AND CREDIT

EGA
(LOCAL)

on probation two may have coursework and total number of credit hours limited and may be required to register for specific courses. ~~Students~~ A student on probation two must earn a semester GPA(1) of at least 2.0 ~~complete at least one credit course in their the student's~~ next semester/~~session~~ of enrollment ~~and earn a semester/session GPA(1) of at least 2.0.~~ A sStudent on probation twos shall remain on probation two until ~~their the student's~~ cumulative GPA(1) is 2.0 or higher.

5. "Academic Dismissal": ~~A S~~students on probation two, shall be placed on academic dismissal if ~~they the student~~ fails to earn a semester GPA(1) of at least 2.0 ~~complete at least one credit course in their the student's~~ next semester/~~session~~ of enrollment ~~and earn a semester/session GPA(1) of at least 2.0.~~ ~~A s~~Students on academic dismissal ~~are is~~ not eligible to enroll in credit courses in the next 12 months.
6. "Probation Three": ~~A s~~Student who ~~iss who are~~ readmitted after an academic dismissal shall be placed on probation three. ~~Students on academic dismissal shall be readmitted on probation three.~~ ~~A s~~Students on probation three may have coursework and total number of credit hours limited and may be required to register for specific courses. ~~A s~~Students on probation three must earn a semester GPA(1) of at least 2.0 ~~complete at least one credit course in their the student's~~ next semester/~~session~~ of enrollment ~~and earn a semester/session GPA(1) of at least 2.0.~~ ~~Students~~ A student on probation three shall remain on probation three until ~~their the student's~~ cumulative ~~GPA(GPA)~~ (1) is 2.0 or higher.
7. "Indefinite Academic Dismissal": ~~A s~~Students on probation three shall be placed on indefinite academic dismissal if ~~they the student~~ fails to earn a semester GPA(1) of at least 2.0 ~~complete at least one credit course in their the student's~~ next semester/~~session~~ of enrollment ~~and earn a semester/session GPA(1) of at least 2.0.~~ ~~A s~~Student who is on s on indefinite academic dismissal ~~are is~~ not eligible to enroll for 12 months and ~~are is~~ only eligible to enroll after that pe-riod upon the recommendation of the chief student affairs officer, or a designee, at the college last attended.

Other Colleges

A student on suspension or academic dismissal from another institution is ineligible for admission to any College District college unless the student has met the academic standards of the College District.

ACADEMIC ACHIEVEMENT
GRADING AND CREDIT

EGA
(LOCAL)

Academic Honors

Academic honors are designated as follows:

1. President's Honor Roll: A full-time student who completes at least 12 hours of credit in the fall, spring, or summer semester, and who earns a college-level grade point average (GPA(2)) [See "Method of Calculation"] of 3.58–3.794.0 for the semester, -and who is in good standing shall be listed on the Vice President's Honor Roll.
2. Vice President's Honor Roll: A Full-time ~~students~~ student who completes at least 12 hours of credit in the fall, spring, or summer semester, and who earns average a college-level GPA (2) of 3.58–3.794.0 for the semester, and who is in good standing shall be listed ~~placed~~ on the Vice President's Honor Roll.
- 4-3. Academic Recognition List: A Part ~~part~~-time students who ~~take~~ completes 6 to 12-11 credit hours in the fall, spring, or summer semester, who and maintain earns a college-level GPA (2) of a-3.5 or higher ~~grade-point average for the semester,~~ and who is in good standing ~~are shall be placed~~ listed on the Academic Recognition List.

FINANCIAL ITEM NO. 7C-1

Approval of Educational Agreement Between the Dallas County Community College District (DCCCD) and Amazon.com Services, LLC

The Chancellor recommends that authorization be given to approve an agreement with Amazon.com Services, LLC with an effective date of June 1, 2020 through December 31, 2025 with the option for an automatic extension on a month-to-month basis until either party terminates the agreement. This agreement is to develop and provide an educational curriculum to help current Amazon employees earn credits toward associate degrees related to mechatronics and robotics.

Purpose

To meet student, industry and community educational needs

There will be four cohorts, each with 25 students, for a total of 100 students to be trained by December 2020. We anticipate training approximately 300 employees in 2021. DCCCD, working with Amazon, will develop and create pathways toward one of the following Associate Degrees for students to pursue upon completion of the Program:

- AAS (Associate of Applied Science)
- AS (Associate of Science)
- ASCT (Associate of Science Career & Tech)

Background

Eastfield is currently one of only three colleges partnering with Amazon on this training. This program will comply with Amazon's most recent standards of apprenticeships which include:

- Meet Amazon's training requirements and prepare the students for the Packaging Machinery Manufacturers Industry (PMMI) and the National Occupational Competency Testing Institute (NOCTI) industry testing requirements
- Have closed cohort registration for the students
- Include comprehensive classroom, laboratory and on-the-job learning opportunities
- Have activities and interactive coursework and utilize audio-visuals to enhance student learning
- Maintain traditional lecture instruction classroom ratios mutually agreed upon based on content and appropriate pedagogical standards

Funding Source
Operating Budget

Reviewed By
John Robertson, Chief Financial Officer
Robert Wendland, General Counsel

Resource Contact
Eddie Tealer, President, Eastfield College
Joyce Williams, Associate Vice Chancellor, Workforce Development,

FINANCIAL ITEM NO. 7C-2

Approval of Agreement for Water and Wastewater Easements with the City of Dallas at Richland College

The Chancellor recommends that authorization be given to approve an agreement with the City of Dallas to grant a new water and wastewater easements to install and maintain a new underground utility to service buildings at Richland College.

Purpose

This proposed easement site will initiate the approval of a new water and wastewater easements with the City of Dallas for Richland College. The easement agreements will bind the City of Dallas to preserve and protect the District property upon installation of the new underground primary utility service. The District will have the right to review, approve design and construction of this work.

Background

These proposed easements sites will initiate the approval of a new water and wastewater easement agreement with City of Dallas for Richland College. The easement agreements will bind City of Dallas, to preserve and protect the District property upon installation of the new utilities service. The District will have the right to review, approve design and construction of any work.

Funding Source

Operating Budget

Reviewed By

John Robertson , Chief Financial Officer

Resource Contact

John Robertson , Chief Financial Officer

WASTEWATER EASEMENT
Richland Junior College
Block 8425
James E. Jackson Survey, Abstract No. 700
City of Dallas, Dallas County, Texas

EXHIBIT A

DESCRIPTION, of a 115 square foot (0.003 acre) tract of land situated in the James E. Jackson Survey, Abstract No. 700, Dallas County, Texas and in Block 8425, Official Block Numbers of the City of Dallas; said tract being part of Richland Junior College, an addition to the City of Dallas, Texas according to the plat recorded in Volume 70073, Page 1600 in the Deed Records of Dallas County, Texas and part of that certain tract of land described in Warranty Deed to Dallas County Junior College District recorded in Volume 970, Page 885, in said Deed Records; said 115 square foot (0.003 acre) tract being more particularly described as follows:

COMMENCING, at a 5/8-inch iron rod (Controlling Monument) found in the south right-of-way line of Walnut Street (a 100 foot-wide right-of-way, formerly County Road (Lawler) No. 177 and a portion recorded in Volume 70073, Page 1600, in said Deed Records) and a north line of said Richland Junior College;

THENCE, North 89 degrees, 13 minutes, 36 seconds East, along the said south line of Walnut Street the said north line of Richland Junior College, a distance of 978.92 feet to a point at the northeast corner of a 10-foot wide sanitary sewer easement and the northwest corner of a 10-foot wide water main easement, both recorded in Volume 70073, Page 1600, in said Deed Records; said point being South 89 degrees, 13 minutes, 36 seconds West, a distance of 1,201.44 feet from a 5/8- inch iron rod (Controlling Monument) found at an angle point in the said south line of Walnut Street and the said north line of Richland Junior College;

THENCE, departing the said south line of Walnut Street and the said north line of Richland Junior College, and along an east, a northeast and an east line of said sanitary sewer easement and the west, southwest and a west line of said 10-foot wide water main easement, the following three (3) calls:

Due South, a distance of 698.56 feet to a point;

South 25 degrees, 51 minutes, 59 seconds East, a distance of 366.79 feet to a point;

Due South, a distance of 984.30 feet to an angle point in the said east line of the sanitary sewer easement;

THENCE, South 60 degrees, 15 minutes, 18 seconds West, departing the said west line of the water main easement and along a southeast line of said sanitary sewer easement, a distance of 124.93 feet to a 5/8-inch iron rod with "PACHECO KOCH EASEMENT" cap set for corner at the **POINT OF BEGINNING**;

THENCE, departing the said south line of the 10-foot wide water main easement and into, over and through the said Richland Junior College, the following three (3) calls:

South 29 degrees, 44 minutes, 42 seconds East, a distance of 11.50 feet to a 5/8-inch iron rod with "PACHECO KOCH EASEMENT" cap set for corner;

South 60 degrees, 15 minutes, 18 seconds West, a distance of 10.00 feet to a 5/8-inch iron rod with "PACHECO KOCH EASEMENT" cap set for corner;

North 29 degrees, 44 minutes, 42 seconds West, a distance of 11.50 feet to a 5/8-inch iron rod with "PACHECO KOCH EASEMENT" cap set for corner on the said south line of the 10-foot wide sanitary sewer easement;

(For SPRG use only)

Reviewed By: JL

Date: 2-4-20

SPRG NO: 5186

WASTEWATER EASEMENT
Richland Junior College
Block 8425
James E. Jackson Survey, Abstract No. 700
City of Dallas, Dallas County, Texas

EXHIBIT A


THENCE, North 60 degrees, 15 minutes, 18 seconds East, along the said south line of the 10-foot wide sanitary sewer easement, a distance of 10.00 feet to the **POINT OF BEGINNING**;

CONTAINING, 115 square feet or 0.003 acres of land, more or less.

Bearing system for this survey is based on the State Plane Coordinate System, North American Datum of 1983 (Adjustment Realization 2011), Texas North Central Zone, 4202. Distances reported have been scaled by applying the TxDOT Dallas County surface adjustment factor of 1.000136506.

(A survey plat of even survey date herewith accompanies this description.)

The undersigned, Registered Professional Land Surveyor, hereby certifies that the foregoing description accurately sets out the metes and bounds of the easement tract described.

 2020/02/03
Michael C. Clover
Registered Professional Land Surveyor No. 5225
Pacheco Koch Consulting Engineers, Inc.
7557 Rambler Road, Suite 1400, Dallas, Texas 75231
(972) 235-3031
TX Reg. Surveying Firm LS-10008000



1351-19.284EX5.docx
1351-19.284EX5.dwg HKP

(For SPRG use only)	
Reviewed By:	<u>JE</u>
Date:	<u>2-4-20</u>
SPRG NO:	<u>5186</u>

McLOVER 2/3/2020 6:28 AM M:\DWG-13\1351-19.284\DWG\SURVEY C3D 2018\1351-19.284\EX5.DWG

WALNUT STREET

FORMERLY COUNTY ROAD (LAWLER) NO. 177
(VOL. 70073, PG. 1600)
(D.R.D.C.T)

EXHIBIT A

JOHN R. REID SURVEY
ABSTRACT NO. 1196
BF HALL SURVEY
ABSTRACT NO. 660



100' R.O.W.

CENTERLINE

N 89°13'36" E 978.92'

L=766.65'

5/8-INCH IRON ROD FOUND
(C.M.)

POINT OF COMMENCING

BLOCK 8425
RICHLAND JUNIOR COLLEGE
(VOL. 70073, PG. 1600)
(D.R.D.C.T)
DALLAS COUNTY JUNIOR COLLEGE DISTRICT
(VOL. 970, PG. 885)
(D.R.D.C.T)

10 FOOT WIDE SANITARY SEWER EASEMENT
(VOL. 70073, PG. 1600)
(D.R.D.C.T)

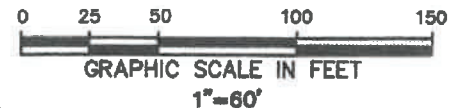
20 FOOT WIDE FIRELANE EASEMENT
(VOL. 70073, PG. 1600)
(D.R.D.C.T)

BLOCK 8425

BF HALL SURVEY -
ABSTRACT NO. 660

LEGEND

	PROPERTY LINE	VOL. - VOLUME
	NEW EASEMENT LINE	PG. - PAGE
	EXISTING EASEMENT LINE	O.P.R.D.C.T. - OFFICIAL PUBLIC RECORDS OF DALLAS COUNTY, TEXAS
	ABSTRACT LINE	D.R.D.C.T. - DEED RECORDS OF DALLAS COUNTY, TEXAS
	5/8-INCH IRON ROD W/ "PACHECO KOCH EASEMENT" CAP SET	R.O.W. - RIGHT-OF-WAY
	(C.M.) - CONTROLLING MONUMENT	INST. - INSTRUMENT NO. - NUMBER
		SF. - SQUARE FEET



NOTES:

1. A metes and bounds description of even survey date herewith accompanies this plat of survey.
2. Bearing system for this survey is based on the State Plane Coordinate System, North American Datum of 1983 (Adjustment Realization 2011), Texas North Central Zone, 4202. Distances reported have been scaled by applying the TxDOT Dallas County surface adjustment factor of 1.000136506.
3. The survey abstract lines shown hereon are approximate and not located on the ground.

(For SPRG use only)

Reviewed By: JE
Date: 2-4-20
SPRG NO: 5186

The undersigned, Registered Professional Land Surveyor, hereby certifies that this plat of survey accurately sets out the metes and bounds of the easement tract described.



Michael C. Clover
Registered Professional
Land Surveyor No. 5225

Date

2020/02/03



7557 RAMBLER ROAD, SUITE 1400
DALLAS, TX 75231 972.235.3031
TX REG. ENGINEERING FIRM F-469
TX REG. SURVEYING FIRM LS-10008000

WASTEWATER EASEMENT

RICHLAND JUNIOR COLLEGE
BLOCK 8425

JAMES E. JACKSON SURVEY, ABSTRACT NO. 700,
CITY OF DALLAS, DALLAS COUNTY, TEXAS
PAGE 3 OF 8

DRAWN BY	CHECKED BY	SCALE	DATE	JOB NUMBER
HKP	MCC	1"=60'	FEB. 2020	1351-19.284

M:\DWG-13\1351-19.284\DWG\SURVEY C3D 2018\1351-19.284EX5.DWG
MCLOVER 2/3/2020 6:30 AM

MATCH LINE (SEE SHEET 3)

WALNUT STREET

EXHIBIT A

FORMERLY COUNTY
ROAD (LAWLER) NO. 177
(VOL. 70073, PG. 1600)
(D.R.D.C.T)

CENTERLINE

100' R.O.W.

JOHN R. REID SURVEY
ABSTRACT NO. 1196

BF HALL SURVEY
ABSTRACT NO. 660



N 89°13'36" E 978.92'

N 89°13'36" E 1,201.44'

L=554.89'

5/8-INCH
IRON ROD
FOUND
(C.M.)

10' SANITARY SEWER EASEMENT
(VOL. 70073, PG. 1600)
(D.R.D.C.T)

10' WATER MAIN EASEMENT
(VOL. 70073, PG. 1600)
(D.R.D.C.T)

DUE SOUTH 698.56'

BLOCK 8425
RICHLAND JUNIOR
COLLEGE
(VOL. 70073, PG. 1600)
(D.R.D.C.T)
DALLAS COUNTY JUNIOR
COLLEGE DISTRICT
(VOL. 970, PG. 885)
(D.R.D.C.T)

20' FIRELANE EASEMENT
(VOL. 70073, PG. 1600)
(D.R.D.C.T)

BF HALL SURVEY -
ABSTRACT NO. 660

MATCH LINE (SEE SHEET 5)

0 25 50 100 150

GRAPHIC SCALE IN FEET

1"=60'

NOTES:

1. A metes and bounds description of even survey date herewith accompanies this plat of survey.
2. Bearing system for this survey is based on the State Plane Coordinate System, North American Datum of 1983 (Adjustment Realization 2011), Texas North Central Zone, 4202. Distances reported have been scaled by applying the TxDOT Dallas County surface adjustment factor of 1.000136506.
3. The survey abstract lines shown hereon are approximate and not located on the ground.

(For SPRG use only)

Reviewed By: JL
Date: 2-4-20
SPRG NO: 5186

LEGEND

	PROPERTY LINE	VOL. - VOLUME
	NEW EASEMENT LINE	PG. - PAGE
	EXISTING EASEMENT LINE	O.P.R.D.C.T. - OFFICIAL PUBLIC RECORDS OF DALLAS COUNTY, TEXAS
	ABSTRACT LINE	D.R.D.C.T. - DEED RECORDS OF DALLAS COUNTY, TEXAS
	5/8-INCH IRON ROD W/ "PACHECO KOCH EASEMENT" CAP SET	R.O.W. - RIGHT-OF-WAY
	(C.M.) - CONTROLLING MONUMENT	INST. - INSTRUMENT
		NO. - NUMBER
		SF. - SQUARE FEET

WASTEWATER EASEMENT

RICHLAND JUNIOR COLLEGE
BLOCK 8425

JAMES E. JACKSON SURVEY, ABSTRACT NO. 700,
CITY OF DALLAS, DALLAS COUNTY, TEXAS
PAGE 4 OF 8



7557 RAMBLER ROAD, SUITE 1400
DALLAS, TX 75231 972.235.3031
TX REG. ENGINEERING FIRM F-469
TX REG. SURVEYING FIRM LS-10008000

DRAWN BY	CHECKED BY	SCALE	DATE	JOB NUMBER
HKP	MCC	1"=60'	FEB. 2020	1351-19.284

MATCH LINE (SEE SHEET 4)

EXHIBIT A

BF HALL SURVEY
ABSTRACT NO. 660

JAMES E JACKSON SURVEY
ABSTRACT NO. 700

10' WATER MAIN EASEMENT
(VOL. 70073, PG. 1600)
(D.R.D.C.T.)

10' SANITARY SEWER EASEMENT
(VOL. 70073, PG. 1600)
(D.R.D.C.T.)

DUE SOUTH 698.56'



20' FIRELANE EASEMENT
(VOL. 70073, PG. 1600)
(D.R.D.C.T.)

BLOCK 8425
RICHLAND JUNIOR
COLLEGE
(VOL. 70073, PG. 1600)
(D.R.D.C.T.)

DALLAS COUNTY JUNIOR
COLLEGE DISTRICT
(VOL. 970, PG. 885)
(D.R.D.C.T.)

JAMES E JACKSON SURVEY
ABSTRACT NO. 700

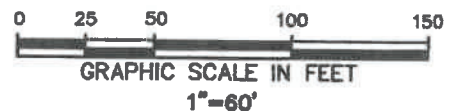
20' FIRELANE EASEMENT
(VOL. 70073, PG. 1600)
(D.R.D.C.T.)

S 25°51'59" E
368.79'

15' WATER MAIN EASEMENT
(VOL. 89229, PG. 3405)
(D.R.D.C.T.)

15' WATER MAIN EASEMENT
(VOL. 89229, PG. 3401)
(D.R.D.C.T.)

MATCH LINE (SEE SHEET 6)



NOTES:

1. A metes and bounds description of even survey date herewith accompanies this plat of survey.
2. Bearing system for this survey is based on the State Plane Coordinate System, North American Datum of 1983 (Adjustment Realization 2011), Texas North Central Zone, 4202. Distances reported have been scaled by applying the TxDOT Dallas County surface adjustment factor of 1.000136506.
3. The survey abstract lines shown hereon are approximate and not located on the ground.

(For SPRG use only)

Reviewed By: SL
Date: 2-4-20
SPRG NO: 5186

LEGEND

—	PROPERTY LINE	VOL. - VOLUME
---	NEW EASEMENT	PG. - PAGE
---	LINE	O.P.R.D.C.T. - OFFICIAL PUBLIC RECORDS
---	EXISTING EASEMENT	OF DALLAS COUNTY, TEXAS
---	LINE	D.R.D.C.T. - DEED RECORDS OF
---	ABSTRACT LINE	DALLAS COUNTY, TEXAS
○	5/8-INCH IRON ROD W/ "PACHECO KOCH EASEMENT"	R.O.W. - RIGHT-OF-WAY
	CAP SET	INST. - INSTRUMENT
	(C.M.) - CONTROLLING MONUMENT	NO. - NUMBER
		SF. - SQUARE FEET



7557 RAMBLER ROAD, SUITE 1400
DALLAS, TX 75231 972.235.3031
TX REG. ENGINEERING FIRM F-469
TX REG. SURVEYING FIRM LS-10008000

WASTEWATER EASEMENT

RICHLAND JUNIOR COLLEGE
BLOCK 8425

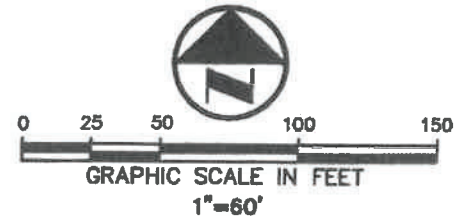
JAMES E. JACKSON SURVEY, ABSTRACT NO. 700,
CITY OF DALLAS, DALLAS COUNTY, TEXAS
PAGE 5 OF 8

DRAWN BY	CHECKED BY	SCALE	DATE	JOB NUMBER
HKP	MCC	1"=60'	FEB. 2020	1351-19.284

31

Reviewed By: JL
Date: 2-4-20
SPRG NO: 5186

EXHIBIT A



JAMES E JACKSON SURVEY
ABSTRACT NO. 700
BLOCK 8425

20' FIRELANE EASEMENT
(VOL. 70073, PG. 1600)
(D.R.D.C.T.)

10' WATER MAIN EASEMENT
(VOL. 70073, PG. 1800)
(D.R.D.C.T.)

RICHLAND JUNIOR
COLLEGE ADDITION
(VOL. 70073, PG. 1600)
(D.R.D.C.T)

DALLAS COUNTY JUNIOR
COLLEGE DISTRICT
(VOL. 970, PG. 885)
(D.R.D.C.T)

**WASTEWATER
EASEMENT
115 SF
(0.003 ACRES)**

10' SANITARY SEWER EASEMENT
(VOL. 70073, PG. 1600)
(D.R.D.C.T)

POINT OF BEGINNING

MATCH LINE (SEE SHEET 7)

<i>LINE</i>	<i>BEARING</i>	<i>LENGTH</i>
L1	S 29°44'42" E	11.50'
L2	S 60°15'18" W	10.00'
L3	N 29°44'42" W	11.50'
L4	N 60°15'18" E	10.00'

=====	PROPERTY LINE	VOL. -	VOLUME
=====	NEW EASEMENT	PG. -	PAGE
-----	LINE	O.P.R.D.C.T. -	OFFICIAL PUBLIC RECORDS
-----	EXISTING EASEMENT		OF DALLAS COUNTY, TEXAS
-----	LINE	D.R.D.C.T. -	DEED RECORDS OF
-----	ABSTRACT LINE		DALLAS COUNTY, TEXAS
○	5/8-INCH IRON ROD W/ "PACHECO KOCH EASEMENT"	R.O.W. -	RIGHT-OF-WAY
	CAP SET	INST. -	INSTRUMENT
		NO. -	NUMBER
(C.M.) -	CONTROLLING MONUMENT	SF. -	SQUARE FEET

1. A metes and bounds description of even survey date herewith accompanies this plat of survey.
2. Bearing system for this survey is based on the State Plane Coordinate System, North American Datum of 1983 (Adjustment Realization 2011), Texas North Central Zone, 4202. Distances reported have been scaled by applying the TxDOT Dallas County surface adjustment factor of 1.000136506.
3. The survey abstract lines shown hereon are approximate and not located on the ground.

**RICHLAND JUNIOR COLLEGE
BLOCK 8425**

JAMES E. JACKSON SURVEY, ABSTRACT NO. 700,
CITY OF DALLAS, DALLAS COUNTY, TEXAS
PAGE 8 OF 8



7557 RAMBLER ROAD, SUITE 1400
DALLAS, TX 75231 972.235.3031
TX REG. ENGINEERING FIRM F-469
TX REG. SURVEYING FIRM LS-10008000

DRAWN BY	CHECKED BY	SCALE	DATE	JOB NUMBER
HKP	MCC	1"=60'	FEB. 2020	1351-19.284

WASTEWATER EASEMENT
Richland Junior College
Block 8425
James E. Jackson Survey, Abstract No. 700
City of Dallas, Dallas County, Texas

Exhibit A

DESCRIPTION, of a 125 square foot (0.003 acre) tract of land situated in the James E. Jackson Survey, Abstract No. 700, Dallas County, Texas and in Block 8425, Official Block Numbers of the City of Dallas; said tract being part of Richland Junior College, an addition to the City of Dallas, Texas according to the plat recorded in Volume 70073, Page 1600 in the Deed Records of Dallas County, Texas and part of that certain tract of land described in Warranty Deed to Dallas County Junior College District recorded in Volume 970, Page 885, in said Deed Records; said 125 square foot (0.003 acre) tract being more particularly described as follows:

COMMENCING, at a 5/8-inch iron rod (Controlling Monument) found in the south right-of-way line of Walnut Street (a 100 foot-wide right-of-way, formerly County Road (Lawler) No. 177 and a portion recorded in Volume 70073, Page 1600, in said Deed Records) and a north line of said Richland Junior College;

THENCE, North 89 degrees, 13 minutes, 36 seconds East, along the said north line of said Richland Junior College and the said south line of Walnut Street, a distance of 978.92 feet to a point at the northeast corner of a 10-foot wide sanitary sewer easement and the northwest corner of a 10-foot wide water main easement, both recorded in Volume 70073, Page 1600, in said Deed Records; said point being South 89 degrees, 13 minutes, 36 seconds West, a distance of 1,201.44 feet from a 5/8- inch iron rod (Controlling Monument) found at an angle point in the said south line of Walnut Street and the said north line of Richland Junior College;

THENCE, departing the said south line of Walnut Street and the said north line of Richland Junior College, and along an east, a northeast and an east line of said sanitary sewer easement and the west, southwest and a west line of said 10-foot wide water main easement, the following three (3) calls:

Due South, a distance of 698.56 feet to a point;

South 25 degrees, 51 minutes, 59 seconds East, a distance of 366.79 feet to a point;

Due South, a distance of 984.30 feet to an angle point in the said east line of the sanitary sewer easement;

THENCE, South 60 degrees, 15 minutes, 18 seconds West, departing the said west line of the water main easement and along a southeast line of said sanitary sewer easement a distance of 353.42 feet to a 5/8-inch iron rod with "PACHECO KOCH EASEMENT" cap set for corner at the **POINT OF BEGINNING**;

THENCE, departing the said southeast line of the sanitary sewer easement and into, over and through the said Richland Junior College, the following three (3) calls:

South 29 degrees, 44 minutes, 42 seconds East, a distance of 12.50 feet to a 5/8-inch iron rod with "PACHECO KOCH EASEMENT" cap set for corner;

South 60 degrees, 15 minutes, 18 seconds West, a distance of 10.00 feet to a 5/8-inch iron rod with "PACHECO KOCH EASEMENT" cap set for corner;

North 29 degrees, 44 minutes, 42 seconds West, a distance of 12.50 feet to a 5/8-inch iron rod with "PACHECO KOCH EASEMENT" cap set for corner on the said southeast line of the sanitary sewer easement;

(For SPRG use only)	
Reviewed By: _____	JL
Date: _____	2-3-20
SPRG NO: _____	5187

WASTEWATER EASEMENT
Richland Junior College
Block 8425
James E. Jackson Survey, Abstract No. 700
City of Dallas, Dallas County, Texas

Exhibit A

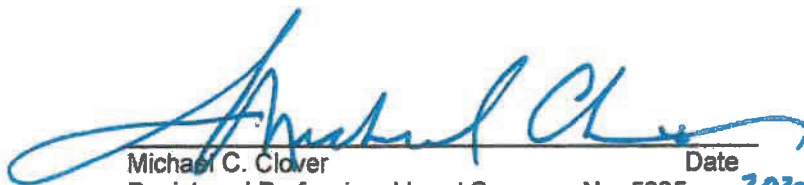
THENCE, North 60 degrees, 15 minutes, 18 seconds East, along the said southeast line of the sanitary sewer easement, a distance of 10.00 feet, to the **POINT OF BEGINNING**;

CONTAINING, 125 square feet or 0.003 acres of land, more or less.

Bearing system for this survey is based on the State Plane Coordinate System, North American Datum of 1983 (Adjustment Realization 2011), Texas North Central Zone, 4202. Distances reported have been scaled by applying the TxDOT Dallas County surface adjustment factor of 1.000136506.

(A survey plat of even survey date herewith accompanies this description.)

The undersigned, Registered Professional Land Surveyor, hereby certifies that the foregoing description accurately sets out the metes and bounds of the easement tract described.



Michael C. Clover
Registered Professional Land Surveyor No. 5225
Pacheco Koch Consulting Engineers, Inc.
7557 Rambler Road, Suite 1400, Dallas, Texas 75231
(972) 235-3031
TX Reg. Surveying Firm LS-10008000

Date 2020/01/22



1351-19.284EX6.docx
1351-19.284EX6.dwg HKP

(For SPRG use only)

Reviewed By: JL
Date: 2-3-20
SPRG NO: 5187

M: \DWG-13\1351-19.284\DWG\SURVEY C3D 2018\1351-19.284EX6.DWG
MCLOVER 1/21/2020 3:24 PM

WALNUT STREET

FORMERLY COUNTY ROAD (LAWLER) NO. 177
(VOL. 70073, PG. 1600)
(D.R.D.C.T)

Exhibit A

JOHN R. REID SURVEY
ABSTRACT NO. 1196

BF HALL SURVEY
ABSTRACT NO. 660



100' R.O.W.
CENTERLINE

N 89°13'36" E 978.92'

5/8-INCH IRON ROD FOUND
(C.M.)

POINT OF COMMENCING

RICHLAND JUNIOR COLLEGE
(VOL. 70073, PG. 1600)
(D.R.D.C.T)

DALLAS COUNTY JUNIOR COLLEGE DISTRICT
(VOL. 970, PG. 885)
(D.R.D.C.T)

10' SANITARY SEWER EASEMENT
(VOL. 70073, PG. 1600)
(D.R.D.C.T)

20' FIRELANE EASEMENT
(VOL. 70073, PG. 1600)
(D.R.D.C.T)

CITY BLOCK 8425
BF HALL SURVEY -
ABSTRACT NO. 660

LEGEND

=====	PROPERTY LINE	VOL. - VOLUME
=====	NEW EASEMENT LINE	PG. - PAGE
-----	EXISTING EASEMENT LINE	O.P.R.D.C.T. - OFFICIAL PUBLIC RECORDS OF DALLAS COUNTY, TEXAS
-----	ABSTRACT LINE	D.R.D.C.T. - DEED RECORDS OF DALLAS COUNTY, TEXAS
○	5/8-INCH IRON ROD W/ "PACHECO KOCH EASEMENT" CAP SET	R.O.W. - RIGHT-OF-WAY
(C.M.)	CONTROLLING MONUMENT	INST. - INSTRUMENT NO. - NUMBER
		SF. - SQUARE FEET

0 25 50 100 150

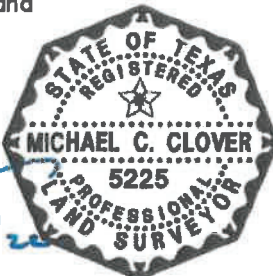
GRAPHIC SCALE IN FEET

1"=60'

(For SPRG use only)

Reviewed By: JL
Date: 2-3-20
SPRG NO: 5187

The undersigned, Registered Professional Land Surveyor, hereby certifies that this plat of survey accurately sets out the metes and bounds of the easement tract described.



Michael C. Clover
Registered Professional
Land Surveyor No. 5225

Date
2020/01/20

NOTES:

1. A metes and bounds description of even survey date herewith accompanies this plat of survey.
2. Bearing system for this survey is based on the State Plane Coordinate System, North American Datum of 1983 (Adjustment Realization 2011), Texas North Central Zone, 4202. Distances reported have been scaled by applying the TxDOT Dallas County surface adjustment factor of 1.000136506.
3. The survey abstract lines shown hereon are approximate and not located on the ground.

WASTEWATER EASEMENT

RICHLAND JUNIOR COLLEGE
BLOCK 8425

JAMES E. JACKSON SURVEY, ABSTRACT NO. 700,
CITY OF DALLAS, DALLAS COUNTY, TEXAS
PAGE 3 OF 8

Pacheco Koch

7557 RAMBLER ROAD, SUITE 1400
DALLAS, TX 75231 972.235.3031
TX REG. ENGINEERING FIRM F-469
TX REG. SURVEYING FIRM LS-10008000

DRAWN BY	CHECKED BY	SCALE	DATE	JOB NUMBER
HKP	MCC	1"=60'	JAN. 2020	1351-19.284

Exhibit A

CENTERLINE

JOHN R. REID SURVEY
ABSTRACT NO. 1196
BF HALL SURVEY
ABSTRACT NO. 660



N 89°13'36" E 978.92'

N 89°13'36" E 1.201.44'

 $L = 554.89'$

5/8-INCH
IRON ROD
FOUND
(C.M.)

10' SANITARY
SEWER EASEMENT
(VOL. 70073, PG. 1600)
(D.R.D.C.T.)

10' WATER MAIN EASEMENT
(VOL. 70073, PG. 1600)
(D.R.D.C.T.)

BLOCK 8425
BF HALL SURVEY -
ABSTRACT NO. 660

DUE SOUTH 698.56'

BLOCK 8425
 RICHLAND JUNIOR
 COLLEGE
 (VOL. 70073, PG. 1600)
 (D.R.D.C.T)
 DALLAS COUNTY JUNIOR
 COLLEGE DISTRICT
 (VOL. 970, PG. 885)
 (D.R.D.C.T)

- 20' FIRELANE EASEMENT
(VOL. 70073, PG. 1600)
(O.R.D.C.T.)

MATCH LINE (SEE SHEET 5)



(For SPRG use only)

Reviewed By: JL
Date: 2-3-20
SPRG NO: 5187

=====	PROPERTY LINE	VOL. -	VOLUME
=====	NEW EASEMENT	PG. -	PAGE
-----	LINE	O.P.R.D.C.T. -	OFFICIAL PUBLIC RECORDS
-----	EXISTING EASEMENT		OF DALLAS COUNTY, TEXAS
-----	LINE	D.R.D.C.T. -	DEED RECORDS OF
-----	ABSTRACT LINE		DALLAS COUNTY, TEXAS
○	5/8-INCH IRON ROD W/ "PACHECO KOCH EASEMENT"	R.O.W. -	RIGHT-OF-WAY
	CAP SET	INST. -	INSTRUMENT
		NO. -	NUMBER
(C.M.) -	CONTROLLING MONUMENT	SF. -	SQUARE FEET

1. A metes and bounds description of even survey date herewith accompanies this plat of survey.
2. Bearing system for this survey is based on the State Plane Coordinate System, North American Datum of 1983 (Adjustment Realization 2011), Texas North Central Zone, 4202. Distances reported have been scaled by applying the TxDOT Dallas County surface adjustment factor of 1.000136506.
3. The survey abstract lines shown hereon are approximate and not located on the ground.



7557 RAMBLER ROAD, SUITE 1400
DALLAS, TX 75231 972.235.3031
TX REG. ENGINEERING FIRM F-469
TX REG. SURVEYING FIRM LS-10008000

WASTEWATER EASEMENT

**RICHLAND JUNIOR COLLEGE
BLOCK 8425**

JAMES E. JACKSON SURVEY, ABSTRACT NO. 700,
CITY OF DALLAS, DALLAS COUNTY, TEXAS
PAGE 4 OF 8

DRAWN BY	CHECKED BY	SCALE	DATE	JOB NUMBER
HKP	MCC	1"=60'	JAN. 2020	1351-19.284

MATCH LINE (SEE SHEET 4)



BF HALL SURVEY
ABSTRACT NO. 660

JAMES E JACKSON SURVEY
ABSTRACT NO. 700

10' WATER MAIN EASEMENT
(VOL. 70073, PG. 1600)
(D.R.D.C.T.)

10' SANITARY SEWER EASEMENT
(VOL. 70073, PG. 1600)
(D.R.D.C.T.)

Exhibit A

698.56'
DUE SOUTH

20' FIRELANE EASEMENT
(VOL. 70073, PG. 1600)
(D.R.D.C.T.)

BLOCK 8425
JAMES E JACKSON SURVEY
ABSTRACT NO. 700

BLOCK 8425
RICHLAND JUNIOR
COLLEGE
(VOL. 70073, PG. 1600)
(D.R.D.C.T.)

DALLAS COUNTY JUNIOR
COLLEGE DISTRICT
(VOL. 970, PG. 885)
(D.R.D.C.T.)

20' FIRELANE EASEMENT
(VOL. 70073, PG. 1600)
(D.R.D.C.T.)

S 25°51'59" E
366.79'

15' WATER MAIN EASEMENT
(VOL. 89229, PG. 3405)
(D.R.D.C.T.)

15' WATER MAIN EASEMENT
(VOL. 89229, PG. 3401)
(D.R.D.C.T.)

MATCH LINE (SEE SHEET 6)



NOTES:

1. A metes and bounds description of even survey date herewith accompanies this plat of survey.
2. Bearing system for this survey is based on the State Plane Coordinate System, North American Datum of 1983 (Adjustment Realization 2011), Texas North Central Zone, 4202. Distances reported have been scaled by applying the TxDOT Dallas County surface adjustment factor of 1.000136506.
3. The survey abstract lines shown hereon are approximate and not located on the ground.

(For SPRG use only)

Reviewed By: SL
Date: 2-3-20
SPRG NO: 5187

LEGEND

—	PROPERTY LINE	VOL. - VOLUME
—	NEW EASEMENT LINE	PG. - PAGE
—	EXISTING EASEMENT LINE	O.P.R.D.C.T. - OFFICIAL PUBLIC RECORDS OF DALLAS COUNTY, TEXAS
—	ABSTRACT LINE	D.R.D.C.T. - DEED RECORDS OF DALLAS COUNTY, TEXAS
○	5/8-INCH IRON ROD W/ "PACHECO KOCH EASEMENT" CAP SET	R.O.W. - RIGHT-OF-WAY
(C.M.)	CONTROLLING MONUMENT	INST. - INSTRUMENT
		NO. - NUMBER
		SF. - SQUARE FEET



7557 RAMBLER ROAD, SUITE 1400
DALLAS, TX 75231 972.235.3031
TX REG. ENGINEERING FIRM F-469
TX REG. SURVEYING FIRM LS-10008000

**WASTEWATER
EASEMENT**

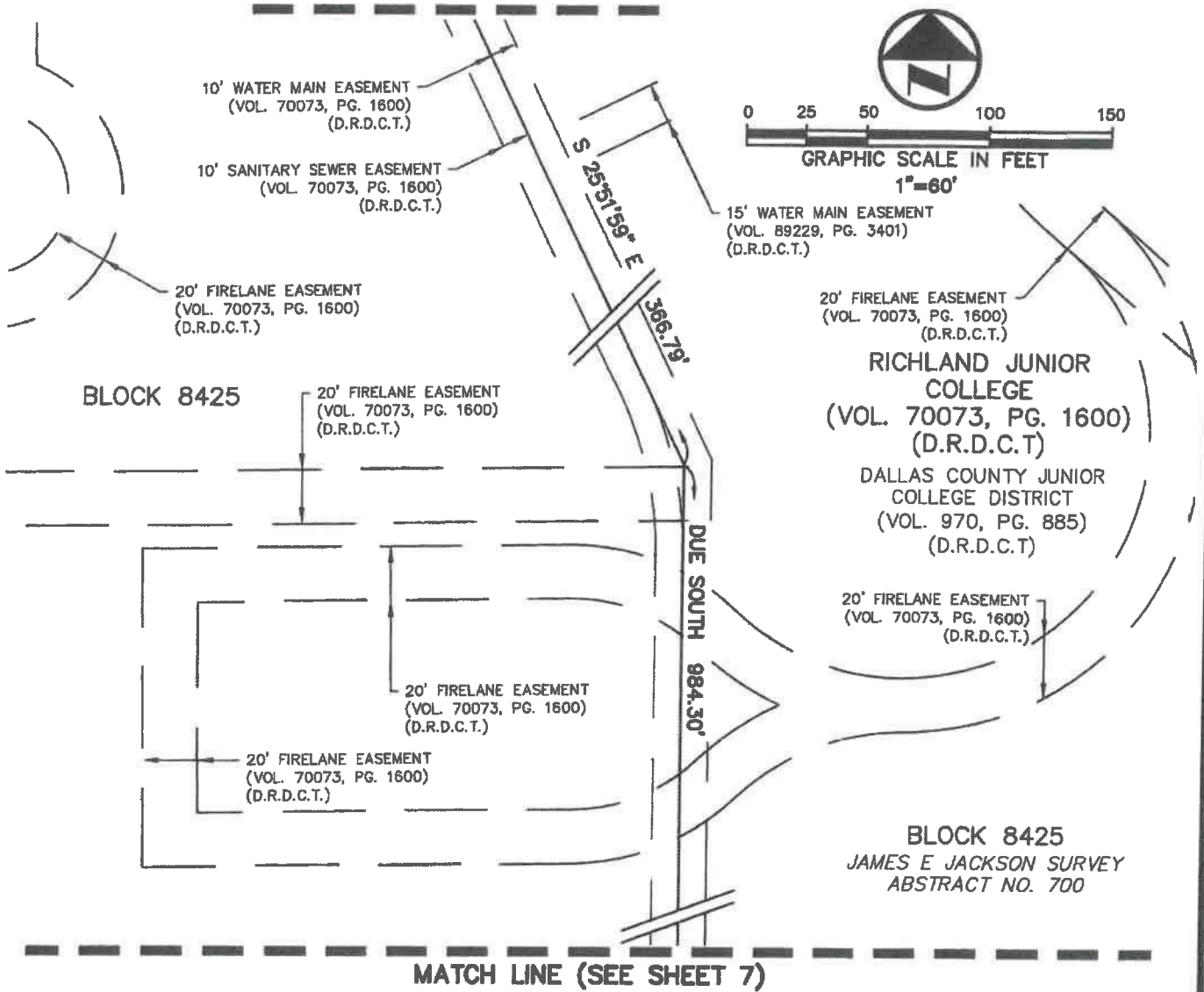
RICHLAND JUNIOR COLLEGE
BLOCK 8425

JAMES E. JACKSON SURVEY, ABSTRACT NO. 700,
CITY OF DALLAS, DALLAS COUNTY, TEXAS
PAGE 5 OF 8

DRAWN BY	CHECKED BY	SCALE	DATE	JOB NUMBER
HKP	MCC	1"=60'	JAN. 2020	1351-19.284

MATCH LINE (SEE SHEET 5)

Exhibit A



MATCH LINE (SEE SHEET 7)

(For SPRG use only)

Reviewed By: JL
Date: 2-3-20
SPRG NO: 5187

LEGEND

—	PROPERTY LINE	VOL. - VOLUME
—	NEW EASEMENT	PG. - PAGE
---	EXISTING EASEMENT	O.P.R.D.C.T. - OFFICIAL PUBLIC RECORDS OF DALLAS COUNTY, TEXAS
---	EXISTING EASEMENT	D.R.D.C.T. - DEED RECORDS OF DALLAS COUNTY, TEXAS
---	ABSTRACT LINE	R.O.W. - RIGHT-OF-WAY
○	5/8-INCH IRON ROD W/ "PACHECO KOCH EASEMENT" CAP SET	INST. - INSTRUMENT
(C.M.)	CONTROLLING MONUMENT	NO. - NUMBER
		SF. - SQUARE FEET

NOTES:

1. A metes and bounds description of even survey date herewith accompanies this plat of survey.
2. Bearing system for this survey is based on the State Plane Coordinate System, North American Datum of 1983 (Adjustment Realization 2011), Texas North Central Zone, 4202. Distances reported have been scaled by applying the TxDOT Dallas County surface adjustment factor of 1.000136506.
3. The survey abstract lines shown hereon are approximate and not located on the ground.

WASTEWATER EASEMENT

RICHLAND JUNIOR COLLEGE
BLOCK 8425

JAMES E. JACKSON SURVEY, ABSTRACT NO. 700,
CITY OF DALLAS, DALLAS COUNTY, TEXAS
PAGE 6 OF 8

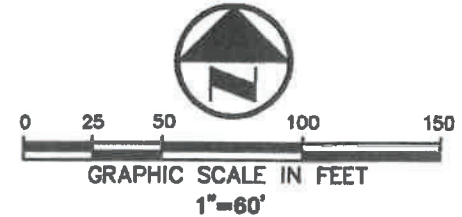


7557 RAMBLER ROAD, SUITE 1400
DALLAS, TX 75231 972.235.3031
TX REG. ENGINEERING FIRM F-489
TX REG. SURVEYING FIRM LS-10008000

DRAWN BY	CHECKED BY	SCALE	DATE	JOB NUMBER
HKP	MCC	1"=60'	JAN. 2020	1351-19.284

MATCH LINE (SEE SHEET 6)

BLOCK 8425



RICHLAND JUNIOR
COLLEGE
(VOL. 70073, PG. 1600)
(D.R.D.C.T.)

DALLAS COUNTY JUNIOR
COLLEGE DISTRICT
(VOL. 970, PG. 885)
(D.R.D.C.T.)

JAMES E JACKSON SURVEY
ABSTRACT NO. 700
BLOCK 8425

Exhibit A

MATCH LINE (SEE SHEET 8)

20' FIRELANE EASEMENT
(VOL. 70073, PG. 1600)
(D.R.D.C.T.)

DUE SOUTH 984.30'

10' WATER MAIN EASEMENT
(VOL. 70073, PG. 1600)
(D.R.D.C.T.)

10' SANITARY SEWER EASEMENT
(VOL. 70073, PG. 1600)
(D.R.D.C.T.)

20' FIRELANE EASEMENT
(VOL. 70073, PG. 1600)
(D.R.D.C.T.)

S 60°15'18" W
353.42'

15' WATER MAIN EASEMENT
(VOL. 95010, PG. 358)
(D.R.D.C.T.)

(For SPRG use only)

Reviewed By: JE
Date: 2-3-20
SPRG NO: 5187

LEGEND

—	PROPERTY LINE	VOL. - VOLUME
—	NEW EASEMENT LINE	PG. - PAGE
---	EXISTING EASEMENT LINE	O.P.R.D.C.T. - OFFICIAL PUBLIC RECORDS OF DALLAS COUNTY, TEXAS
---	ABSTRACT LINE	D.R.D.C.T. - DEED RECORDS OF DALLAS COUNTY, TEXAS
○	5/8-INCH IRON ROD W/ "PACHECO KOCH EASEMENT" CAP SET	R.O.W. - RIGHT-OF-WAY
(C.M.)	CONTROLLING MONUMENT	INST. - INSTRUMENT
		NO. - NUMBER
		SF. - SQUARE FEET

NOTES:

1. A metes and bounds description of even survey date herewith accompanies this plat of survey.
2. Bearing system for this survey is based on the State Plane Coordinate System, North American Datum of 1983 (Adjustment Realization 2011), Texas North Central Zone, 4202. Distances reported have been scaled by applying the TxDOT Dallas County surface adjustment factor of 1.000136506.
3. The survey abstract lines shown hereon are approximate and not located on the ground.

**WASTEWATER
EASEMENT**

RICHLAND JUNIOR COLLEGE
BLOCK 8425

JAMES E. JACKSON SURVEY, ABSTRACT NO. 700,
CITY OF DALLAS, DALLAS COUNTY, TEXAS
PAGE 7 OF 8

Pacheco Koch

7557 RAMBLER ROAD, SUITE 1400
DALLAS, TX 75231 972.235.3031
TX REG. ENGINEERING FIRM F-489
TX REG. SURVEYING FIRM LS-10008000

DRAWN BY	CHECKED BY	SCALE	DATE	JOB NUMBER
HKP	MCC	1"=60'	JAN. 2020	1351-19.284

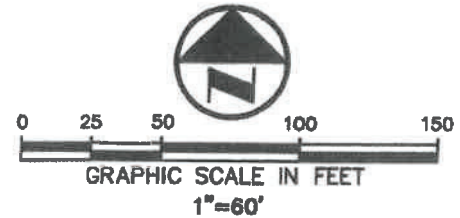
(For SPRG use only)

Reviewed By: JL

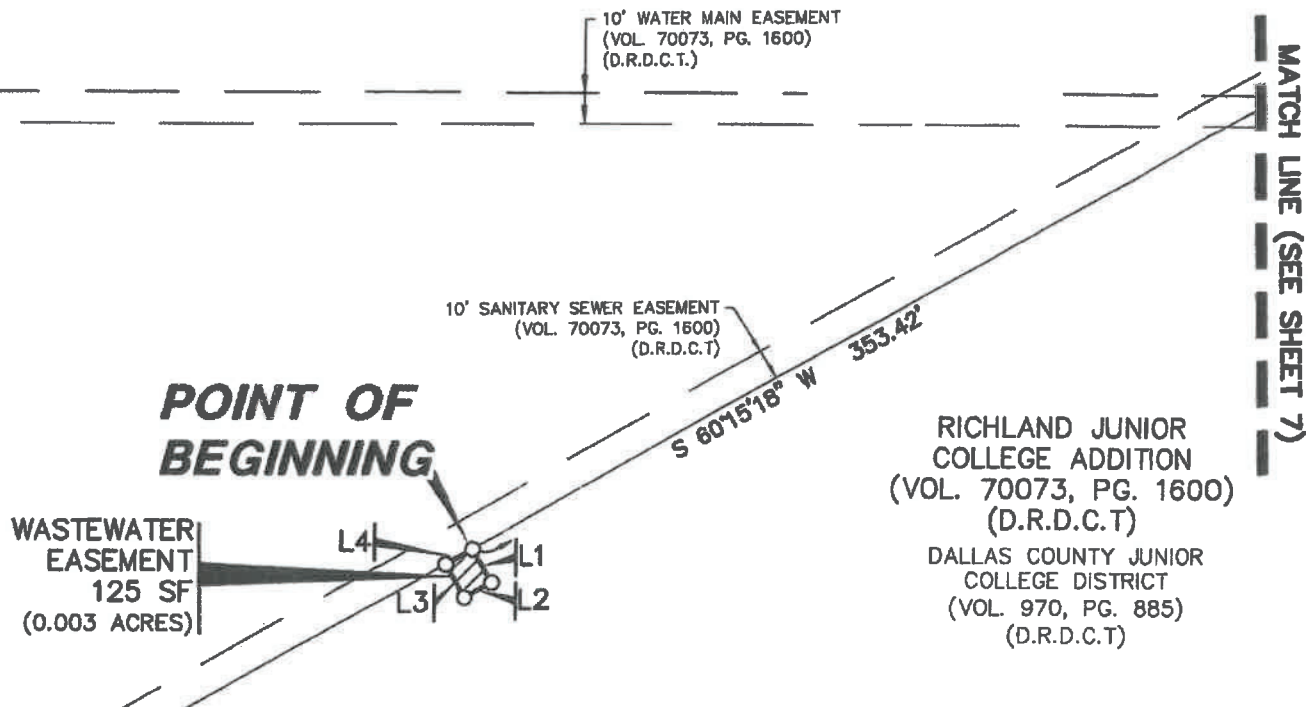
Date: 2-3-20

SPRG NO: 5187

Exhibit A



JAMES E JACKSON SURVEY
ABSTRACT NO. 700
BLOCK 8425



LINE TABLE

LINE	BEARING	LENGTH
L1	S 29°44'42" E	12.50'
L2	S 60°15'18" W	10.00'
L3	N 29°44'42" W	12.50'
L4	N 60°15'18" E	10.00'

LEGEND

	PROPERTY LINE	VOL. - VOLUME
	NEW EASEMENT LINE	PG. - PAGE
	EXISTING EASEMENT LINE	O.P.R.D.C.T. - OFFICIAL PUBLIC RECORDS OF DALLAS COUNTY, TEXAS
	ABSTRACT LINE	D.R.D.C.T. - DEED RECORDS OF DALLAS COUNTY, TEXAS
	5/8-INCH IRON ROD W/ "PACHECO KOCH EASEMENT" CAP SET	R.O.W. - RIGHT-OF-WAY
		INST. - INSTRUMENT
		NO. - NUMBER
		SF. - SQUARE FEET
(C.M.)	- CONTROLLING MONUMENT	

NOTES:

1. A metes and bounds description of even survey date herewith accompanies this plat of survey.
2. Bearing system for this survey is based on the State Plane Coordinate System, North American Datum of 1983 (Adjustment Realization 2011), Texas North Central Zone, 4202. Distances reported have been scaled by applying the TxDOT Dallas County surface adjustment factor of 1.000136506.
3. The survey abstract lines shown hereon are approximate and not located on the ground.

WASTEWATER EASEMENT

RICHLAND JUNIOR COLLEGE
BLOCK 8425

JAMES E. JACKSON SURVEY, ABSTRACT NO. 700,
CITY OF DALLAS, DALLAS COUNTY, TEXAS
PAGE 8 OF 8



7557 RAMBLER ROAD, SUITE 1400
DALLAS, TX 75231 972.235.3031
TX REG. ENGINEERING FIRM F-489
TX REG. SURVEYING FIRM LS-10008000

DRAWN BY	CHECKED BY	SCALE	DATE	JOB NUMBER
HKP	MCC	1"=60'	JAN. 2020	1351-19.284

WATER EASEMENT
Richland Junior College
City Block 8425
James E. Jackson Survey, Abstract No. 700
City of Dallas, Dallas County, Texas

E-1111A

DESCRIPTION, of a 150 square foot (0.003 acre) tract of land situated in the James E. Jackson Survey, Abstract No. 700, Dallas County, Texas and in City Block 8425, Official Block Numbers of the City of Dallas; said tract being part of Richland Junior College, an addition to the City of Dallas, Texas according to the plat recorded in Volume 70073, Page 1600 of the Deed Records of Dallas County, Texas and part of that certain tract of land described in Warranty Deed to Dallas County Junior College District recorded in Volume 970, Page 885 of said Deed Records; said 150 square foot (0.003 Acre) tract being more particularly described as follows:

COMMENCING, at a 5/8-inch iron rod (Controlling Monument) found in the south right-of-way line of Walnut Street (a 100 foot-wide right-of-way, formerly County Road (Lawler) No. 177 and a portion recorded in Volume 70073, Page 1600, in said Deed Records) and the north line of said Richland Junior College;

THENCE, North 89 degrees, 13 minutes, 36 seconds East, along the said north line of Richland Junior College and the said south line of Walnut Street, a distance of 988.92 feet to a point for corner at the northeast corner of a 10-foot wide water main easement described in Volume 70073, Page 1600 in said Deed Records; said point being South 89 degrees 13, minutes, 36 seconds West, a distance of 1,191.44 feet from a 5/8-inch iron rod (Controlling Monument) found at an angle point in the said south line of Walnut Street and the said north line of Richland Junior College;

THENCE, departing the said south line of Walnut Street and the said north line of Richland Junior College Addition, and along the east and south lines of said 10-foot water easement, the following four (4) calls:

Due South, a distance of 696.26 feet to a point;

South 25 degrees, 51 minutes, 59 seconds East, a distance of 366.79 feet to a point;

Due South, a distance of 1,023.70 feet to a point;

Due West, a distance of 359.09 feet to a 5/8-inch iron rod with "PACHECO KOCH EASEMENT" cap set for corner at the **POINT OF BEGINNING**;

THENCE; departing the said east line of the water easement and, into, over and across said Richland Junior College, the following three (3) calls:

Due South, a distance of 15.00 feet to a 5/8-inch iron rod with "PACHECO KOCH EASEMENT" cap set for corner;

Due West, a distance of 10.00 feet to a 5/8-inch iron rod with "PACHECO KOCH EASEMENT" cap set for corner;

(For SPRG use only)	
Reviewed By:	_____ <i>JC</i> _____
Date:	_____ <i>1-31-20</i> _____
SPRG NO:	_____ <i>5135</i> _____

Exhibit A

WATER EASEMENT
Richland Junior College
City Block 8425
James E. Jackson Survey, Abstract No. 700
City of Dallas, Dallas County, Texas

Due North, a distance of 15.00 feet to a 5/8-inch iron rod with "PACHECO KOCH EASEMENT" cap set for corner;

Due East, along said referenced easement a distance of 10.00 feet to the **POINT OF BEGINNING**;

CONTAINING, 150 square feet or 0.003 acres of land, more or less.

Bearing system for this survey is based on the State Plane Coordinate System, North American Datum of 1983 (Adjustment Realization 2011), Texas North Central Zone, 4202. Distances reported have been scaled by applying the TxDOT Dallas County surface adjustment factor of 1.000136506.

(A survey plat of even survey date herewith accompanies this description.)

The undersigned, Registered Professional Land Surveyor, hereby certifies that the foregoing description accurately sets out the metes and bounds of the easement tract described.



Michael C. Clover
Registered Professional Land Surveyor No. 5225
Pacheco Koch Consulting Engineers, Inc.
7557 Rambler Road, Suite 1400, Dallas, Texas 75231
(972) 235-3031
TX Registered Surveying Firm LS-10008000
1351-19.284EX2.docx
1351-19.284EX2.dwg DHM/JAN

Date 10/20/20



(For SPRG use only)	
Reviewed By:	JL
Date:	1-31-20
SPRG NO:	5135

WALNUT STREET

FORMERLY COUNTY ROAD (LAWLER) NO. 177
(VOL. 70073, PG. 1600)
(D.R.D.C.T)

L=766.65'

(100' R.O.W.)

CENTERLINE

Exhibit A

JOHN R. REID SURVEY
ABSTRACT NO. 1196

BF HALL SURVEY
ABSTRACT NO. 660



N 89°13'36" E 988.92'

5/8-INCH IRON ROD FOUND
(C.M.)

POINT OF COMMENCING

BLOCK 8425
RICHLAND JUNIOR COLLEGE
(VOL. 70073, PG. 1600)
(D.R.D.C.T)

DALLAS COUNTY JUNIOR COLLEGE DISTRICT
(VOL. 970, PG. 885)
(D.R.D.C.T)

10 FOOT WIDE SANITARY SEWER EASEMENT
(VOL. 70073, PG. 1600)
(D.R.D.C.T)

20 FOOT WIDE FIRELANE EASEMENT
(VOL. 70073, PG. 1600)
(D.R.D.C.T)

BF HALL SURVEY -
ABSTRACT NO. 660

LEGEND

	PROPERTY LINE	VOL. - VOLUME
	NEW EASEMENT LINE	PG. - PAGE
	EXISTING EASEMENT LINE	O.P.R.D.C.T. - OFFICIAL PUBLIC RECORDS OF DALLAS COUNTY, TEXAS
	ABSTRACT LINE	D.R.D.C.T. - DEED RECORDS OF DALLAS COUNTY, TEXAS
	5/8-INCH IRON ROD W/ "PACHECO KOCH EASEMENT" CAP SET	R.O.W. - RIGHT-OF-WAY
	(C.M.) - CONTROLLING MONUMENT	INST. - INSTRUMENT
		NO. - NUMBER
		SF. - SQUARE FEET

0 25 50 100 150

GRAPHIC SCALE IN FEET

1"=60'

NOTES:

1. A metes and bounds description of even survey date herewith accompanies this plat of survey.
2. Bearing system for this survey is based on the State Plane Coordinate System, North American Datum of 1983 (Adjustment Realization 2011), Texas North Central Zone, 4202. Distances reported have been scaled by applying the TxDOT Dallas County surface adjustment factor of 1.000136506.
3. The survey abstract lines shown hereon are approximate and not located on the ground.

(For SPRG use only)

Reviewed By: JL
Date: 1-31-20
SPRG NO: 5135

The undersigned, Registered Professional Land Surveyor, hereby certifies that this plat of survey accurately sets out the metes and bounds of the easement tract described.



Michael C. Clover
Registered Professional
Land Surveyor No. 5225

Date

2020/01/2



7557 RAMBLER ROAD, SUITE 1400
DALLAS, TX 75231 972.235.3031
TX REG. ENGINEERING FIRM F-469
TX REG. SURVEYING FIRM LS-10008000

WATER EASEMENT

RICHLAND JUNIOR COLLEGE
CITY BLOCK 8425
JAMES E. JACKSON SURVEY, ABSTRACT NO. 700,
CITY OF DALLAS, DALLAS COUNTY, TEXAS
PAGE 3 OF 8

DRAWN BY	CHECKED BY	SCALE	DATE	JOB NUMBER
JAN	MCC	1"=60'	JAN. 2020	1351-19.284

M:\DWG-13\1351-19.284\DWG\SURVEY CSD 2018\1351-19.284EX2.DWG
MCCOVER 1/21/2020 10:07 AM

MATCH LINE (SEE SHEET 3)

WALNUT STREET

FORMERLY COUNTY ROAD (LAWLER) NO. 177
(VOL. 70073, PG. 1600)
(D.R.D.C.T.)

N 89°13'36" E 988.92'

CENTERLINE

(100' R.O.W.)

JOHN R. REID SURVEY
ABSTRACT NO. 1196

BF HALL SURVEY
ABSTRACT NO. 660

N 89°13'36" E 1191.44'

Len 554.89'

5/8-INCH
IRON ROD
FOUND
(C.M.)

BLOCK 8425
RICHLAND JUNIOR
COLLEGE
(VOL. 70073, PG. 1600)
(D.R.D.C.T.)

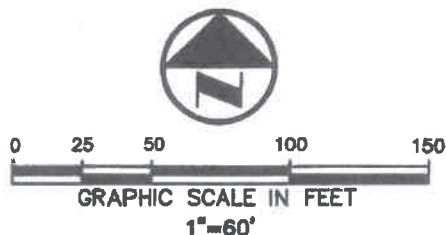
DALLAS COUNTY JUNIOR
COLLEGE DISTRICT
(VOL. 970, PG. 885)
(D.R.D.C.T.)

10 FOOT WIDE SANITARY
SEWER EASEMENT
(VOL. 70073, PG. 1600)
(D.R.D.C.T.)

10 FOOT WIDE
WATER MAIN EASEMENT
(VOL. 70073, PG. 1600)
(D.R.D.C.T.)

DUE SOUTH 696.26'

20 FOOT WIDE FIRELANE
EASEMENT
(VOL. 70073, PG. 1600)
(D.R.D.C.T.)



MATCH LINE (SEE SHEET 5)

NOTES:

1. A metes and bounds description of even survey date herewith accompanies this plat of survey.
2. Bearing system for this survey is based on the State Plane Coordinate System, North American Datum of 1983 (Adjustment Realization 2011), Texas North Central Zone, 4202. Distances reported have been scaled by applying the TxDOT Dallas County surface adjustment factor of 1.000136506.
3. The survey abstract lines shown hereon are approximate and not located on the ground.

(For SPRG use only)

Reviewed By: JE
Date: 1-31-20
SPRG NO: 5135

LEGEND

—	PROPERTY LINE	VOL. - VOLUME
—	NEW EASEMENT LINE	PG. - PAGE
—	EXISTING EASEMENT LINE	O.P.R.D.C.T. - OFFICIAL PUBLIC RECORDS OF DALLAS COUNTY, TEXAS
—	ABSTRACT LINE	D.R.D.C.T. - DEED RECORDS OF DALLAS COUNTY, TEXAS
○	5/8-INCH IRON ROD W/ "PACHECO KOCH EASEMENT" CAP SET	R.O.W. - RIGHT-OF-WAY
(C.M.)	CONTROLLING MONUMENT	INST. - INSTRUMENT
		NO. - NUMBER
		SF. - SQUARE FEET

Pacheco Koch

7557 RAMBLER ROAD, SUITE 1400
DALLAS, TX 75231 972.235.3031
TX REG. ENGINEERING FIRM F-469
TX REG. SURVEYING FIRM LS-10008000

WATER EASEMENT

RICHLAND JUNIOR COLLEGE
CITY BLOCK 8425

JAMES E. JACKSON SURVEY, ABSTRACT NO. 700,
CITY OF DALLAS, DALLAS COUNTY, TEXAS
PAGE 4 OF 8

DRAWN BY	CHECKED BY	SCALE	DATE	JOB NUMBER
JAN	MCC	1"=60'	JAN. 2020	1351-19.284

MATCH LINE (SEE SHEET 4)

Tab A

BF HALL SURVEY
ABSTRACT NO. 660

JAMES E JACKSON SURVEY
ABSTRACT NO. 700



DUE SOUTH 696.26'

10 FOOT WIDE
WATER MAIN EASEMENT
(VOL. 70073, PG. 1600)
(D.R.D.C.T.)

20 FOOT WIDE FIRELANE
EASEMENT
(VOL. 70073, PG. 1600)
(D.R.D.C.T.)

BLOCK 8425
RICHLAND JUNIOR
COLLEGE
(VOL. 70073, PG. 1600)
(D.R.D.C.T.)

DALLAS COUNTY JUNIOR
COLLEGE DISTRICT
(VOL. 970, PG. 885)
(D.R.D.C.T.)

15 FOOT WIDE
WATER MAIN EASEMENT
(VOL. 89229, PG. 3405)
(D.R.D.C.T.)

20 FOOT WIDE FIRELANE
EASEMENT
(VOL. 70073, PG. 1600)
(D.R.D.C.T.)

S 25°51'59" E
366.79'

15 FOOT WIDE
WATER MAIN EASEMENT
(VOL. 89229, PG. 3401)
(D.R.D.C.T.)

MATCH LINE (SEE SHEET 6)



NOTES:

GRAPHIC SCALE IN FEET
1"=60'

1. A metes and bounds description of even survey date herewith accompanies this plat of survey.
2. Bearing system for this survey is based on the State Plane Coordinate System, North American Datum of 1983 (Adjustment Realization 2011), Texas North Central Zone, 4202. Distances reported have been scaled by applying the TxDOT Dallas County surface adjustment factor of 1.000136506.
3. The survey abstract lines shown hereon are approximate and not located on the ground.

(For SPRG use only)

Reviewed By: JL
Date: 1-31-20
SPRG NO: 5135

LEGEND

	PROPERTY LINE	VOL. - VOLUME
	NEW EASEMENT LINE	PG. - PAGE
	EXISTING EASEMENT LINE	O.P.R.D.C.T. - OFFICIAL PUBLIC RECORDS OF DALLAS COUNTY, TEXAS
	ABSTRACT LINE	D.R.D.C.T. - DEED RECORDS OF DALLAS COUNTY, TEXAS
	5/8-INCH IRON ROD W/ "PACHECO KOCH EASEMENT" CAP SET	R.O.W. - RIGHT-OF-WAY
	(C.M.) - CONTROLLING MONUMENT	INST. - INSTRUMENT
		NO. - NUMBER
		SF. - SQUARE FEET



7557 RAMBLER ROAD, SUITE 1400
DALLAS, TX 75231 972.235.3031
TX REG. ENGINEERING FIRM F-469
TX REG. SURVEYING FIRM LS-10008000

DRAWN BY	CHECKED BY	SCALE	DATE	JOB NUMBER
JAN	MCC	1"=60'	JAN. 2020	1351-19.284

**WATER
EASEMENT**

RICHLAND JUNIOR COLLEGE
CITY BLOCK 8425
JAMES E. JACKSON SURVEY, ABSTRACT NO. 700,
CITY OF DALLAS, DALLAS COUNTY, TEXAS
PAGE 5 OF 8

MATCH LINE (SEE SHEET 5)

Exhibit A



JAMES E JACKSON SURVEY
ABSTRACT NO. 700

BLOCK 8425

20 FOOT WIDE FIRELANE
EASEMENT
(VOL. 70073, PG. 1600)
(D.R.D.C.T.)

20 FOOT WIDE FIRELANE
EASEMENT
(VOL. 70073, PG. 1600)
(D.R.D.C.T.)

20 FOOT WIDE FIRELANE
EASEMENT
(VOL. 70073, PG. 1600)
(D.R.D.C.T.)

10 FOOT WIDE
WATER MAIN EASEMENT
(VOL. 70073, PG. 1600)
(D.R.D.C.T.)

15 FOOT WIDE
WATER MAIN EASEMENT
(VOL. 89229, PG. 3401)
(D.R.D.C.T.)

20 FOOT WIDE FIRELANE
EASEMENT
(VOL. 70073, PG. 1600)
(D.R.D.C.T.)

RICHLAND JUNIOR
COLLEGE
(VOL. 70073, PG. 1600)
(D.R.D.C.T.)

DALLAS COUNTY JUNIOR
COLLEGE DISTRICT
(VOL. 970, PG. 885)
(D.R.D.C.T.)

20 FOOT WIDE FIRELANE
EASEMENT
(VOL. 70073, PG. 1600)
(D.R.D.C.T.)

BLOCK 8425

JAMES E JACKSON SURVEY
ABSTRACT NO. 700

MATCH LINE (SEE SHEET 7)

NOTES:

1. A metes and bounds description of even survey date herewith accompanies this plat of survey.
2. Bearing system for this survey is based on the State Plane Coordinate System, North American Datum of 1983 (Adjustment Realization 2011), Texas North Central Zone, 4202. Distances reported have been scaled by applying the TxDOT Dallas County surface adjustment factor of 1.000136506.
3. The survey abstract lines shown hereon are approximate and not located on the ground.

(For SPRG use only)

Reviewed By: JL
Date: 1-31-20
SPRG NO: 5135

LEGEND

—	PROPERTY LINE	VOL. - VOLUME
—	NEW EASEMENT	PG. - PAGE
—	LINE	O.P.R.D.C.T. - OFFICIAL PUBLIC RECORDS
---	EXISTING EASEMENT	OF DALLAS COUNTY, TEXAS
---	LINE	D.R.D.C.T. - DEED RECORDS OF
---	ABSTRACT LINE	DALLAS COUNTY, TEXAS
○	5/8-INCH IRON ROD W/ "PACHECO KOCH EASEMENT"	R.O.W. - RIGHT-OF-WAY
	CAP SET	INST. - INSTRUMENT
	(C.M.) - CONTROLLING MONUMENT	NO. - NUMBER
		SF. - SQUARE FEET



7557 RAMBLER ROAD, SUITE 1400
DALLAS, TX 75231 972.235.3031
TX REG. ENGINEERING FIRM F-469
TX REG. SURVEYING FIRM LS-10008000

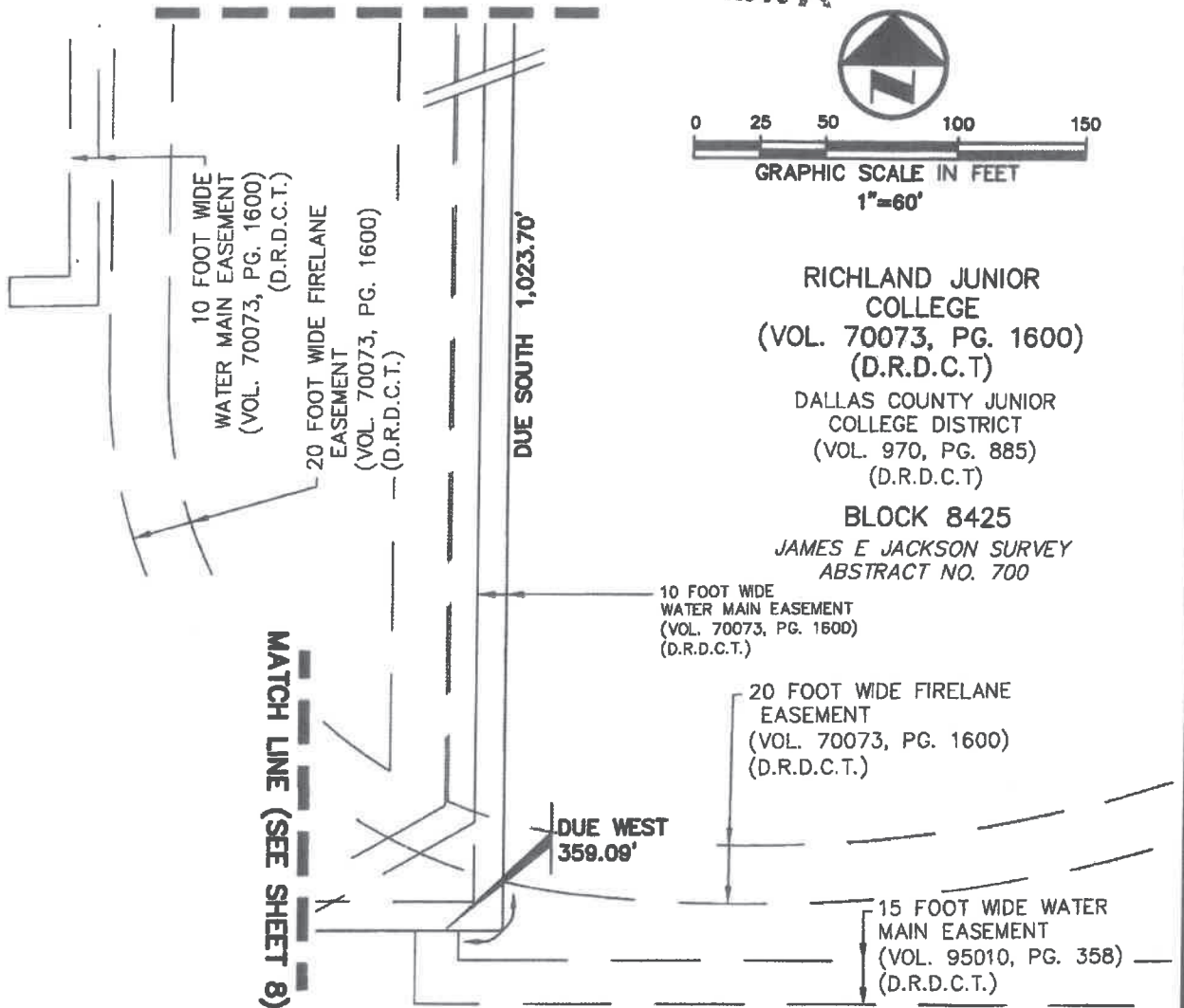
DRAWN BY	CHECKED BY	SCALE	DATE	JOB NUMBER
JAN	MCC	1"=60'	JAN. 2020	1351-19.284

**WATER
EASEMENT**

RICHLAND JUNIOR COLLEGE
CITY BLOCK 8425
JAMES E. JACKSON SURVEY, ABSTRACT NO. 700,
CITY OF DALLAS, DALLAS COUNTY, TEXAS
PAGE 6 OF 8

MATCH LINE (SEE SHEET 6)

Exhibit A



RICHLAND JUNIOR
COLLEGE
(VOL. 70073, PG. 1600)
(D.R.D.C.T.)
DALLAS COUNTY JUNIOR
COLLEGE DISTRICT
(VOL. 970, PG. 885)
(D.R.D.C.T.)
BLOCK 8425
JAMES E JACKSON SURVEY
ABSTRACT NO. 700

NOTES:

1. A metes and bounds description of even survey date herewith accompanies this plat of survey.
2. Bearing system for this survey is based on the State Plane Coordinate System, North American Datum of 1983 (Adjustment Realization 2011), Texas North Central Zone, 4202. Distances reported have been scaled by applying the TxDOT Dallas County surface adjustment factor of 1.000136506.
3. The survey abstract lines shown hereon are approximate and not located on the ground.

(For SPRG use only)
Reviewed By: JL
Date: 1-31-20
SPRG NO: 5135

LEGEND	
—	PROPERTY LINE
---	NEW EASEMENT LINE
- - -	EXISTING EASEMENT LINE
- . - .	ABSTRACT LINE
○	5/8-INCH IRON ROD W/ "PACHECO KOCH EASEMENT" CAP SET
(C.M.)	CONTROLLING MONUMENT
VOL. -	VOLUME
PG. -	PAGE
O.P.R.D.C.T. -	OFFICIAL PUBLIC RECORDS OF DALLAS COUNTY, TEXAS
D.R.D.C.T. -	DEED RECORDS OF DALLAS COUNTY, TEXAS
R.O.W. -	RIGHT-OF-WAY
INST. -	INSTRUMENT
NO. -	NUMBER
SF. -	SQUARE FEET

Pacheco Koch

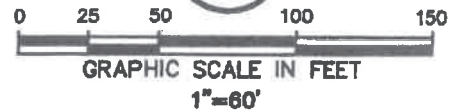
7557 RAMBLER ROAD, SUITE 1400
DALLAS, TX 75231 972.235.3031
TX REG. ENGINEERING FIRM F-469
TX REG. SURVEYING FIRM LS-10008000

DRAWN BY	CHECKED BY	SCALE	DATE	JOB NUMBER
JAN	MCC	1"=60'	JAN. 2020	1351-19.284

**WATER
EASEMENT**

RICHLAND JUNIOR COLLEGE
CITY BLOCK 8425
JAMES E. JACKSON SURVEY, ABSTRACT NO. 700,
CITY OF DALLAS, DALLAS COUNTY, TEXAS
PAGE 7 OF 8

Block 8425



BLOCK 8425
JAMES E JACKSON SURVEY
ABSTRACT NO. 700

**POINT OF
BEGINNING**

DUE EAST 10.00'

DUE WEST 359.09'

DUE NORTH 15.00'

DUE SOUTH 15.00'

WATER EASEMENT
150 SF
(0.003 ACRES)

DUE WEST 10.00'

10 FOOT WIDE SANITARY
SEWER EASEMENT
(VOL. 70073, PG. 1600)
(D.R.D.C.T.)

20 FOOT WIDE FIRELANE
EASEMENT
(VOL. 70073, PG. 1600)
(D.R.D.C.T.)

10 FOOT WIDE
WATER MAIN EASEMENT
(VOL. 70073, PG. 1600)
(D.R.D.C.T.)

RICHLAND JUNIOR
COLLEGE
(VOL. 70073, PG. 1600)
(D.R.D.C.T.)

DALLAS COUNTY JUNIOR
COLLEGE DISTRICT
(VOL. 970, PG. 885)
(D.R.D.C.T.)

BLOCK 8425
JAMES E JACKSON SURVEY
ABSTRACT NO. 700

MATCH LINE (SEE SHEET 7)

NOTES:

1. A metes and bounds description of even survey date herewith accompanies this plat of survey.
2. Bearing system for this survey is based on the State Plane Coordinate System, North American Datum of 1983 (Adjustment Realization 2011), Texas North Central Zone, 4202. Distances reported have been scaled by applying the TxDOT Dallas County surface adjustment factor of 1.000136506.
3. The survey abstract lines shown hereon are approximate and not located on the ground.

(For SPRG use only)

Reviewed By: JS
Date: 1-31-20
SPRG NO: 5135

LEGEND

—	PROPERTY LINE	VOL. - VOLUME
---	NEW EASEMENT LINE	PG. - PAGE
- - -	EXISTING EASEMENT LINE	O.P.R.D.C.T. - OFFICIAL PUBLIC RECORDS OF DALLAS COUNTY, TEXAS
- - -	ABSTRACT LINE	D.R.D.C.T. - DEED RECORDS OF DALLAS COUNTY, TEXAS
○	5/8-INCH IRON ROD W/ "PACHECO KOCH EASEMENT" CAP SET	R.O.W. - RIGHT-OF-WAY
(C.M.)	CONTROLLING MONUMENT	INST. - INSTRUMENT
		NO. - NUMBER
		SF. - SQUARE FEET



7557 RAMBLER ROAD, SUITE 1400
DALLAS, TX 75231 972.235.3031
TX REG. ENGINEERING FIRM F-469
TX REG. SURVEYING FIRM LS-10008000

**WATER
EASEMENT**
RICHLAND JUNIOR COLLEGE
CITY BLOCK 8425
JAMES E. JACKSON SURVEY, ABSTRACT NO. 700,
CITY OF DALLAS, DALLAS COUNTY, TEXAS
PAGE 8 OF 8

DRAWN BY	CHECKED BY	SCALE	DATE	JOB NUMBER
JAN	MCC	1"=60'	JAN. 2020	1351-19.284

WATER EASEMENT
Richland Junior College
City Block 8425
James E. Jackson Survey, Abstract No. 700
City of Dallas, Dallas County, Texas

Exhibit A

DESCRIPTION, of a 547 square foot (0.013 acre) tract of land situated in the James E. Jackson Survey, Abstract No. 700, Dallas County, Texas and in City Block 8425, Official Block Numbers of the City of Dallas; said tract being part of Block 8425, Richland Junior College, an addition to the City of Dallas, Texas according to the plat recorded in Volume 70073, Page 1600 in the Deed Records of Dallas County, Texas and part of that certain tract of land described in Warranty Deed to Dallas County Junior College District recorded in Volume 970, Page 885, in said Deed Records; said 547 square foot (0.013 Acre) tract being more particularly described as follows:

COMMENCING, at a 5/8-inch iron rod (Controlling Monument) found in the south right-of-way line of Walnut Street (a 100 foot-wide right-of-way, formerly County Road (Lawler) No. 177 and a portion recorded in Volume 70073, Page 1600, in said Deed Records) and a north line of said Richland Junior College;

THENCE, North 89 degrees, 13 minutes, 36 seconds East, along the said north line of said Richland Junior College and the said south line of Walnut Street, a distance of 978.92 feet to a point at the northeast corner of a 10 foot wide sanitary sewer easement and the northwest corner of a 10-foot wide water main easement, both recorded in Volume 70073, Page 1600, in said Deed Records; said point being South 89 degrees 13, minutes, 36 seconds West, a distance of 1,201.44 feet from a 5/8- inch iron rod (Controlling Monument) found in the said south line of Walnut Street and the said north line of Richland Junior College;

THENCE, departing the said south line of Walnut Street and the said north line of Richland Junior College, and along the east line of said 10 foot sanitary sewer easement, the west line of said water main easement and a north line of said water easement, the following five (5) calls:

Due South, a distance of 698.56 feet to a point;

South 25 degrees, 51 minutes, 59 seconds East, a distance of 366.79 feet to a point;

Due South, passing a southeast corner of said sanitary sewer easement then continuing along the said west line of the water main easement, in all a total distance of 1,011.40 feet to a point;

Due West, departing the said west line of the water main easement and along the said north line of the water main easement, a distance of 314.87 feet to a 5/8-inch iron rod with "PACHECO KOCH EASEMENT" cap set for corner at the **POINT OF BEGINNING**;

Due West, continuing along the said north line of the water main easement, a distance of 36.50 feet to a 5/8-inch iron rod with "PACHECO KOCH EASEMENT" cap set point for corner;

THENCE, departing the said north line of the water easement and, into, over and across the said Richland Junior College the following three (3) calls:

Due North, a distance of 15.00 feet to a 5/8-inch iron rod with "PACHECO KOCH EASEMENT" cap set point set for corner;

(For SPRG use only)	
Reviewed By:	<u> JL </u>
Date:	<u> 1-31-20 </u>
SPRG NO:	<u> 5136 </u>

WATER EASEMENT
Richland Junior College
City Block 8425
James E. Jackson Survey, Abstract No. 700
City of Dallas, Dallas County, Texas

Exhibit A

Due East, a distance of 36.50 feet to a 5/8-inch iron rod with "PACHECO KOCH EASEMENT" cap set point set for corner;

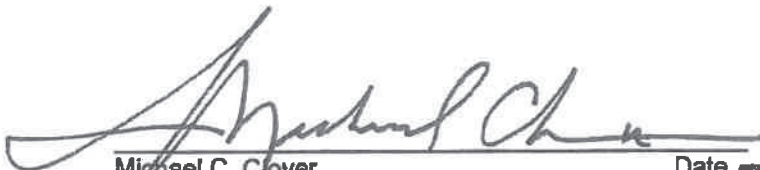
Due South, a distance of 15.00 feet to the **POINT OF BEGINNING**;

CONTAINING, 547 square feet or 0.013 acres of land, more or less.

Bearing system for this survey is based on the State Plane Coordinate System, North American Datum of 1983 (Adjustment Realization 2011), Texas North Central Zone, 4202. Distances reported have been scaled by applying the TxDOT Dallas County surface adjustment factor of 1.000136506.

(A survey plat of even survey date herewith accompanies this description.)

The undersigned, Registered Professional Land Surveyor, hereby certifies that the foregoing description accurately sets out the metes and bounds of the easement tract described.



Michael C. Clover
Registered Professional Land Surveyor No. 5225
Pacheco Koch Consulting Engineers, Inc.
7557 Rambler Road, Suite 1400, Dallas, Texas 75231
(972) 235-3031
TX Reg. Surveying Firm LS-10008000
1351-19.284EX1.docx
1351-19.284EX1.dwg JAN

Date 2020/01/26



(For SPRG use only)

Reviewed By: JL
Date: 1-31-26
SPRG NO: 5136

M:\DWG-13\1351-19.284\DWG\SURVEY C30 2018\1351-19.284EX1.DWG
MCLOVER 1/21/2020 10:12 AM

MATCH LINE (SEE SHEET 3)

WALNUT STREET

FORMERLY COUNTY ROAD (LAWLER) NO. 177
(VOL. 70073, PG. 1600)
(D.R.D.C.T)

N 89°13'36" E 978.92'

Abstract A

CENTERLINE

100' R.O.W.

JOHN R. REID SURVEY
ABSTRACT NO. 1196

BF HALL SURVEY
ABSTRACT NO. 660

S 89°13'36" W 1201.44'

L=554.89'

5/8-INCH
IRON ROD
FOUND
(C.M.)

BLOCK 8425

10 FOOT WIDE SANITARY
SEWER EASEMENT
(VOL. 70073, PG. 1600)
(D.R.D.C.T)

10 FOOT WIDE
WATER MAIN EASEMENT
(VOL. 70073, PG. 1600)
(D.R.D.C.T)

BF HALL SURVEY -
ABSTRACT NO. 660

DUE SOUTH 698.56'

BLOCK 8425
RICHLAND JUNIOR
COLLEGE
(VOL. 70073, PG. 1600)
(D.R.D.C.T)
DALLAS COUNTY JUNIOR
COLLEGE DISTRICT
(VOL. 970, PG. 885)
(D.R.D.C.T)

20 FOOT WIDE FIRELANE
EASEMENT
(VOL. 70073, PG. 1600)
(D.R.D.C.T)

BF HALL SURVEY -
ABSTRACT NO. 660

MATCH LINE (SEE SHEET 5)



0 25 50 100 150

GRAPHIC SCALE IN FEET

1"=60'

NOTES:

1. A metes and bounds description of even survey date herewith accompanies this plat of survey.
2. Bearing system for this survey is based on the State Plane Coordinate System, North American Datum of 1983 (Adjustment Realization 2011), Texas North Central Zone, 4202. Distances reported have been scaled by applying the TxDOT Dallas County surface adjustment factor of 1.000136506.
3. The survey abstract lines shown hereon are approximate and not located on the ground.

LEGEND

PROPERTY LINE	VOL. - VOLUME
NEW EASEMENT	PG. - PAGE
LINE	O.P.R.D.C.T. - OFFICIAL PUBLIC RECORDS
EXISTING EASEMENT	OF DALLAS COUNTY, TEXAS
LINE	D.R.D.C.T. - DEED RECORDS OF
ABSTRACT LINE	DALLAS COUNTY, TEXAS
5/8-INCH IRON ROD W/ "PACHECO KOCH EASEMENT"	R.O.W. - RIGHT-OF-WAY
CAP SET	INST. - INSTRUMENT
(C.M.) - CONTROLLING MONUMENT	NO. - NUMBER
	SF. - SQUARE FEET

(For SPRG use only)

Reviewed By: JL
Date: 1-31-20
SPRG NO: 5136



7557 RAMBLER ROAD, SUITE 1400
DALLAS, TX 75231 972.235.3031
TX REG. ENGINEERING FIRM F-469
TX REG. SURVEYING FIRM LS-10008000

DRAWN BY	CHECKED BY	SCALE	DATE	JOB NUMBER
JAN	MCC	1"=60'	JAN. 2020	1351-19.284

WATER EASEMENT

RICHLAND JUNIOR COLLEGE
CITY BLOCK 8425

JAMES E. JACKSON SURVEY, ABSTRACT NO. 700,
CITY OF DALLAS, DALLAS COUNTY, TEXAS
PAGE 4 OF 8

MATCH LINE (SEE SHEET 4)

E 15ft A

BF HALL SURVEY
ABSTRACT NO. 660

JAMES E JACKSON SURVEY
ABSTRACT NO. 700

10 FOOT WIDE
WATER MAIN EASEMENT
(VOL. 70073, PG. 1600)
(D.R.D.C.T)

DUE SOUTH
698.56'

10 FOOT WIDE SANITARY
SEWER EASEMENT
(VOL. 70073, PG. 1600)
(D.R.D.C.T)

20 FOOT WIDE FIRELANE
EASEMENT
(VOL. 70073, PG. 1600)
(D.R.D.C.T)

JAMES E JACKSON SURVEY
ABSTRACT NO. 700

BLOCK 8425

BLOCK 8425
RICHLAND JUNIOR
COLLEGE
(VOL. 70073, PG. 1600)
(D.R.D.C.T)

DALLAS COUNTY JUNIOR
COLLEGE DISTRICT
(VOL. 970, PG. 885)
(D.R.D.C.T)

S 25°51'59" E
366.79'

20 FOOT WIDE FIRELANE
EASEMENT
(VOL. 70073, PG. 1600)
(D.R.D.C.T)

15 FOOT WIDE
WATER MAIN EASEMENT
(VOL. 89229, PG. 3405)
(D.R.D.C.T)

15 FOOT WIDE
WATER MAIN EASEMENT
(VOL. 89229, PG. 3401)
(D.R.D.C.T)

MATCH LINE (SEE SHEET 6)



0 25 50 100 150

GRAPHIC SCALE IN FEET

1"=60'

NOTES:

1. A metes and bounds description of even survey date herewith accompanies this plat of survey.
2. Bearing system for this survey is based on the State Plane Coordinate System, North American Datum of 1983 (Adjustment Realization 2011), Texas North Central Zone, 4202. Distances reported have been scaled by applying the TxDOT Dallas County surface adjustment factor of 1.000136506.
3. The survey abstract lines shown hereon are approximate and not located on the ground.

LEGEND

—	PROPERTY LINE	VOL. — VOLUME
—	NEW EASEMENT	PG. — PAGE
—	LINE	O.P.R.D.C.T. — OFFICIAL PUBLIC RECORDS
---	EXISTING EASEMENT	OF DALLAS COUNTY, TEXAS
---	LINE	D.R.D.C.T. — DEED RECORDS OF
---	ABSTRACT LINE	DALLAS COUNTY, TEXAS
○	5/8-INCH IRON ROD W/ "PACHECO KOCH EASEMENT"	R.O.W. — RIGHT-OF-WAY
—	CAP SET	INST. — INSTRUMENT
(C.M.)	CONTROLLING MONUMENT	NO. — NUMBER
		SF. — SQUARE FEET

(For SPRG use only)

Reviewed By: JL
Date: 1-31-20
SPRG NO: 5136



7557 RAMBLER ROAD, SUITE 1400
DALLAS, TX 75231 972.235.3031
TX REG. ENGINEERING FIRM F-469
TX REG. SURVEYING FIRM LS-10008000

**WATER
EASEMENT**
RICHLAND JUNIOR COLLEGE
CITY BLOCK 8425
JAMES E. JACKSON SURVEY, ABSTRACT NO. 700,
CITY OF DALLAS, DALLAS COUNTY, TEXAS
PAGE 5 OF 8

DRAWN BY	CHECKED BY	SCALE	DATE	JOB NUMBER
JAN	MCC	1"=60'	JAN. 2020	1351-19.284

MATCH LINE (SEE SHEET 5)

Block A

10 FOOT WIDE
WATER MAIN EASEMENT
(VOL. 70073, PG. 1600)
(D.R.D.C.T.)

10 FOOT WIDE SANITARY
SEWER EASEMENT
(VOL. 70073, PG. 1600)
(D.R.D.C.T.)

BLOCK 8425

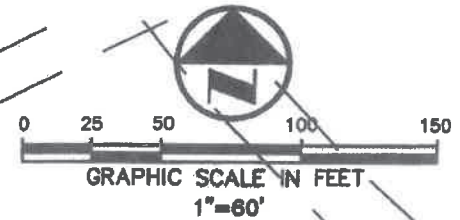
20 FOOT WIDE FIRELANE
EASEMENT
(VOL. 70073, PG. 1600)
(D.R.D.C.T.)

JAMES E JACKSON SURVEY
ABSTRACT NO. 700

20 FOOT WIDE FIRELANE
EASEMENT
(VOL. 70073, PG. 1600)
(D.R.D.C.T.)

20 FOOT WIDE FIRELANE
EASEMENT
(VOL. 70073, PG. 1600)
(D.R.D.C.T.)

20 FOOT WIDE FIRELANE
EASEMENT
(VOL. 70073, PG. 1600)
(D.R.D.C.T.)



15 FOOT WIDE
WATER MAIN EASEMENT
(VOL. 89229, PG. 3401)
(D.R.D.C.T.)

20 FOOT WIDE FIRELANE
EASEMENT
(VOL. 70073, PG. 1600)
(D.R.D.C.T.)

RICHLAND JUNIOR
COLLEGE
(VOL. 70073, PG. 1600)
(D.R.D.C.T.)

DALLAS COUNTY JUNIOR
COLLEGE DISTRICT
(VOL. 970, PG. 885)
(D.R.D.C.T.)

DUE SOUTH
1,011.40'

20 FOOT WIDE FIRELANE
EASEMENT
(VOL. 70073, PG. 1600)
(D.R.D.C.T.)

BLOCK 8425

JAMES E JACKSON SURVEY
ABSTRACT NO. 700

MATCH LINE (SEE SHEET 7)

LEGEND

PROPERTY LINE
NEW EASEMENT
LINE
EXISTING EASEMENT
LINE
ABSTRACT LINE
O 5/8-INCH IRON ROD W/
"PACHECO KOCH EASEMENT"
CAP SET
(C.M.) - CONTROLLING MONUMENT

VOL. - VOLUME
PG. - PAGE
O.P.R.D.C.T. - OFFICIAL PUBLIC RECORDS
OF DALLAS COUNTY, TEXAS
D.R.D.C.T. - DEED RECORDS OF
DALLAS COUNTY, TEXAS
R.O.W. - RIGHT-OF-WAY
INST. - INSTRUMENT
NO. - NUMBER
SF. - SQUARE FEET

NOTES:

1. A metes and bounds description of even survey date herewith accompanies this plat of survey.
2. Bearing system for this survey is based on the State Plane Coordinate System, North American Datum of 1983 (Adjustment Realization 2011), Texas North Central Zone, 4202. Distances reported have been scaled by applying the TxDOT Dallas County surface adjustment factor of 1.000136506.
3. The survey abstract lines shown hereon are approximate and not located on the ground.

(For SPRG use only)

Reviewed By: JL
Date: 1-31-20
SPRG NO: 5136



7557 RAMBLER ROAD, SUITE 1400
DALLAS, TX 75231 972.235.3031
TX REG. ENGINEERING FIRM F-469
TX REG. SURVEYING FIRM LS-10008000

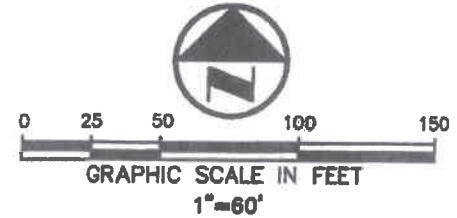
DRAWN BY	CHECKED BY	SCALE	DATE	JOB NUMBER
JAN	MCC	1"=60'	JAN. 2020	1351-19.284

WATER EASEMENT

RICHLAND JUNIOR COLLEGE
CITY BLOCK 8425

JAMES E. JACKSON SURVEY, ABSTRACT NO. 700,
CITY OF DALLAS, DALLAS COUNTY, TEXAS
PAGE 6 OF 8

MATCH LINE (SEE SHEET 6)



20 FOOT WIDE FIRELANE
EASEMENT
(VOL. 70073, PG. 1600)
(D.R.D.C.T)

DUE SOUTH 1,011.40'

BLOCK 8425
RICHLAND JUNIOR
COLLEGE
(VOL. 70073, PG. 1600)
(D.R.D.C.T)

DALLAS COUNTY JUNIOR
COLLEGE DISTRICT
(VOL. 970, PG. 885)
(D.R.D.C.T)

JAMES E JACKSON SURVEY
ABSTRACT NO. 700

10 FOOT WIDE
WATER MAIN EASEMENT
(VOL. 70073, PG. 1600)
(D.R.D.C.T)

10 FOOT WIDE SANITARY
SEWER EASEMENT
(VOL. 70073, PG. 1600)
(D.R.D.C.T)

DUE SOUTH
314.87'

20 FOOT WIDE FIRELANE
EASEMENT
(VOL. 70073, PG. 1600)
(D.R.D.C.T)

15 FOOT WIDE WATER
MAIN EASEMENT
(VOL. 95010, PG. 358)
(D.R.D.C.T)

MATCH LINE (SEE SHEET 8)

LEGEND

—	PROPERTY LINE	VOL. — VOLUME
—	NEW EASEMENT	PG. — PAGE
—	LINE	O.P.R.D.C.T. — OFFICIAL PUBLIC RECORDS
—	EXISTING EASEMENT	OF DALLAS COUNTY, TEXAS
—	LINE	D.R.D.C.T. — DEED RECORDS OF
—	ABSTRACT LINE	DALLAS COUNTY, TEXAS
○	5/8-INCH IRON ROD W/ "PACHECO KOCH EASEMENT"	R.O.W. — RIGHT-OF-WAY
—	CAP SET	INST. — INSTRUMENT
(C.M.)	— CONTROLLING MONUMENT	NO. — NUMBER
		SF. — SQUARE FEET

NOTES:

1. A metes and bounds description of even survey date herewith accompanies this plat of survey.
2. Bearing system for this survey is based on the State Plane Coordinate System, North American Datum of 1983 (Adjustment Realization 2011), Texas North Central Zone, 4202. Distances reported have been scaled by applying the TxDOT Dallas County surface adjustment factor of 1.000136506.
3. The survey abstract lines shown hereon are approximate and not located on the ground.

(For SPRG use only)

Reviewed By: SL
Date: 1-31-20
SPRG NO: 5136

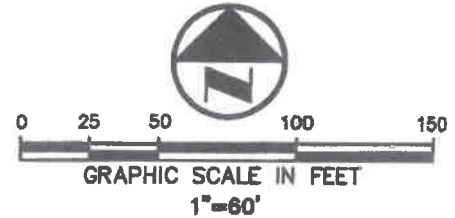


7557 RAMBLER ROAD, SUITE 1400
DALLAS, TX 75231 972.235.3031
TX REG. ENGINEERING FIRM F-489
TX REG. SURVEYING FIRM LS-10008000

**WATER
EASEMENT**
RICHLAND JUNIOR COLLEGE
CITY BLOCK 8425
JAMES E. JACKSON SURVEY, ABSTRACT NO. 700,
CITY OF DALLAS, DALLAS COUNTY, TEXAS
PAGE 7 OF 8

DRAWN BY	CHECKED BY	SCALE	DATE	JOB NUMBER
JAN	MCC	1"=60'	JAN. 2020	1351-19.284

E 1351



JAMES E JACKSON SURVEY
ABSTRACT NO. 700

BLOCK 8425

WATER EASEMENT
547 SF
(0.013 ACRES)

DUE NORTH 15.00'

DUE EAST 36.50'

DUE SOUTH 15.00'

DUE WEST 36.50'

RICHLAND JUNIOR
COLLEGE
(VOL. 70073, PG. 1600)
(D.R.D.C.T)

DALLAS COUNTY JUNIOR
COLLEGE DISTRICT
(VOL. 970, PG. 885)
(D.R.D.C.T)

**POINT OF
BEGINNING**

10 FOOT WIDE SANITARY
SEWER EASEMENT
(VOL. 70073, PG. 1600)
(D.R.D.C.T)

20 FOOT WIDE FIRELANE
EASEMENT
(VOL. 70073, PG. 1600)
(D.R.D.C.T)

10 FOOT WIDE
WATER MAIN EASEMENT
(VOL. 70073, PG. 1600)
(D.R.D.C.T)

DUE WEST 314.87'

MATCH LINE (SEE SHEET 7)

LEGEND

—	PROPERTY LINE	VOL. - VOLUME
—	NEW EASEMENT	PG. - PAGE
---	EXISTING EASEMENT	O.P.R.D.C.T. - OFFICIAL PUBLIC RECORDS
---	LINE	OF DALLAS COUNTY, TEXAS
---	ABSTRACT LINE	D.R.D.C.T. - DEED RECORDS OF
○	5/8-INCH IRON ROD W/ "PACHECO KOCH EASEMENT"	DALLAS COUNTY, TEXAS
	CAP SET	R.O.W. - RIGHT-OF-WAY
	(C.M.) - CONTROLLING MONUMENT	INST. - INSTRUMENT
		NO. - NUMBER
		SF. - SQUARE FEET

NOTES:

1. A metes and bounds description of even survey date herewith accompanies this plat of survey.
2. Bearing system for this survey is based on the State Plane Coordinate System, North American Datum of 1983 (Adjustment Realization 2011), Texas North Central Zone, 4202. Distances reported have been scaled by applying the TxDOT Dallas County surface adjustment factor of 1.000136506.
3. The survey abstract lines shown hereon are approximate and not located on the ground.

(For SPRG use only)

Reviewed By: JL
Date: 1-31-20
SPRG NO: 5138



7557 RAMBLER ROAD, SUITE 1400
DALLAS, TX 75231 972.235.3031
TX REG. ENGINEERING FIRM F-469
TX REG. SURVEYING FIRM LS-10008000

**WATER
EASEMENT**
RICHLAND JUNIOR COLLEGE
CITY BLOCK 8425
JAMES E. JACKSON SURVEY, ABSTRACT NO. 700,
CITY OF DALLAS, DALLAS COUNTY, TEXAS
PAGE 8 OF 8

DRAWN BY	CHECKED BY	SCALE	DATE	JOB NUMBER
JAN	MCC	1"=60'	JAN. 2020	1351-19.284

WATER EASEMENT
Richland Junior College
Block 8425
BF Hall Survey, Abstract No. 660
City of Dallas, Dallas County, Texas

EXHIBIT A

DESCRIPTION, of a 654 square foot (0.015 acre) tract of land situated in the BF Hall Survey, Abstract No 660, City of Dallas, Dallas County, Texas; said tract being part of Block 8425, Richland Junior College, an addition to the City of Dallas, Texas according to the plat recorded in Volume 70073, Page 1600 in the Deed Records of Dallas County, Texas; said tract also being part of that certain tract of land described in Warranty Deed to Dallas County Junior College District recorded in Volume 970, Page 885, in said Deed Records; said 654 square foot (0.015 acre) tract being more particularly described as follows:

COMMENCING, at a 5/8-inch iron rod found in the south right-of-way line of Walnut Street (a 100-foot wide right-of-way, formerly County Road (Lawler) No. 177 and a portion recorded in Volume 70073, Page 1600, in said Deed Records) and the north line of said Richland Junior College, said point being at the beginning of a tangent curve to the left; from said point a 5/8-inch iron rod found at an angle point in said lines, bears North 89 degrees, 13 minutes, 36 seconds East, a distance of 2,180.36 feet;

THENCE, along the said south line of Walnut Street, the said north line of Richard Junior College and said curve to the left, having a central angle of 05 degrees, 10 minutes, 03 seconds, a radius of 1,382.40 feet, a chord bearing and distance of South 86 degrees, 38 minutes, 35 seconds West, 124.64 feet, an arc distance of 124.68 feet to a 5/8-inch iron rod with "PACHECO KOCH EASEMENT" cap set for corner at the **POINT OF BEGINNING**;

THENCE, departing the said south line of Walnut Street and the said north line of Richland Junior College and into and across said Richland Junior College, the following three (3) calls:

South 02 degrees, 55 minutes, 44 seconds East, a distance of 33.28 feet to a 5/8-inch iron rod with "PACHECO KOCH EASEMENT" cap set for corner;

South 87 degrees, 04 minutes, 16 seconds West, a distance of 20.00 feet to a 5/8-inch iron rod with "PACHECO KOCH EASEMENT" cap set for corner;

North 02 degrees, 55 minutes, 44 seconds West, a distance of 32.08 feet to a 5/8-inch iron rod with "PACHECO KOCH EASEMENT" cap set for corner in the said south line of Walnut Street and the said north line of Richland Junior College, said point being in a non-tangent curve to the right;

(For SPRG use only)	
Reviewed By:	<u>JL</u>
Date:	<u>1-31-20</u>
SPRG NO:	<u>5137</u>

BF Hall Survey, Abstract No. 660
City of Dallas, Dallas County, Texas

Exhibit A

The undersigned, Registered Professional Land Surveyor, hereby certifies that the foregoing description accurately sets out the metes and bounds of the easement tract described.

Amel Ch

Michael C. Cover Date
Registered Professional Land Surveyor No. 5225 2020/01/22
Pacheco Koch Consulting Engineers, Inc.
7557 Rambler Road, Suite 1400, Dallas, Texas 75231
(972) 235-3031
TX Reg. Surveying Firm LS-10008000



1351-19.284EX4.docx
1351-19.284EX4.dwg JM

(For SPRG use only)

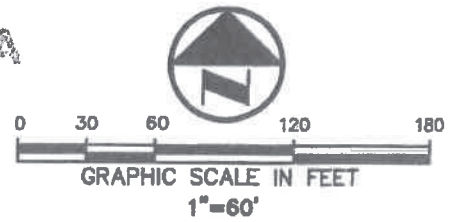
Reviewed By: NSJ

Date: 1-31-20

SPRG NO: 5137

Exhibit A

LEGEND		
=====	PROPERTY LINE	P.O.B. - POINT OF BEGINNING
=====	NEW EASEMENT LINE	VOL. - VOLUME
-----	EXISTING EASEMENT LINE	PG. - PAGE
-----		D.R.D.C.T. - DEED RECORDS OF DALLAS COUNTY, TEXAS
O	5/8-INCH IRON ROD W/ "PACHECO KOCH EASEMENT" CAP SET	R.O.W. - RIGHT-OF-WAY
(C.M.)	- CONTROLLING MONUMENT	INST. - INSTRUMENT
		NO. - NUMBER
		SF. - SQUARE FEET

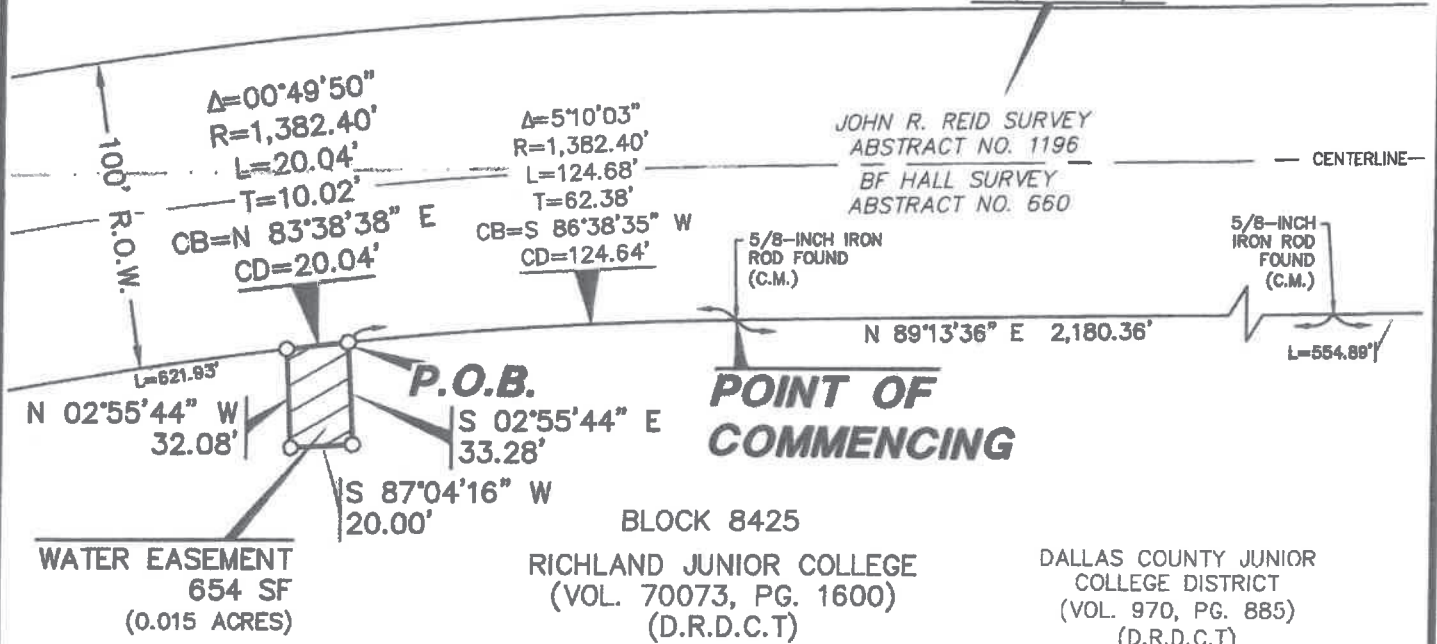


(For SPRG use only)
 Reviewed By: JL
 Date: 1-31-20
 SPRG NO: 5137

LOT 3, BLOCK 1
 RICHLAND BUSINESS PARK
 SUBDIVISION
 (VOL. 83168 PG. 1945)
 (D.R.D.C.T.)

WALNUT STREET

FORMERLY COUNTY
 ROAD (LAWLER) NO. 177
 (VOL. 70073, PG. 1600)
 (D.R.D.C.T.)



NOTES:

1. A metes and bounds description of even survey date herewith accompanies this plat of survey.
2. Bearing system for this survey is based on the State Plane Coordinate System, North American Datum of 1983 (Adjustment Realization 2011), Texas North Central Zone, 4202. Distances reported have been scaled by applying the TxDOT Dallas County surface adjustment factor of 1.000136506.
3. The survey abstract line shown hereon is approximate and not located on the ground.

The undersigned, Registered Professional Land Surveyor, hereby certifies that this plat of survey accurately sets out the metes and bounds of the easement tract described.

Michael C. Clover
 Registered Professional
 Land Surveyor No. 5225

Date: 2020/01/10



Pacheco Koch

7557 RAMBLER ROAD, SUITE 1400
 DALLAS, TX 75231 972.235.3031
 TX REG. ENGINEERING FIRM F-469
 TX REG. SURVEYING FIRM LS-10008000

WATER EASEMENT

RICHLAND JUNIOR COLLEGE
 BLOCK 8425
 BF HALL SURVEY, ABSTRACT NO. 660,
 CITY OF DALLAS, DALLAS COUNTY, TEXAS
 PAGE 3 OF 3

DRAWN BY	CHECKED BY	SCALE	DATE	JOB NUMBER
JM	MCC/LMG	1"=60'	JAN. 2020	1351-19.284

RESOLUTION NO. 7D-1

Adoption of Resolution Postponing the May 2, 2020 Dallas County
Community College District Board of Trustees Election

In accordance with Texas Governor Greg Abbott's March 18, 2020 proclamation suspending certain provisions of the Texas Election Code and the Texas Water Code to allow political subdivisions utilizing the May 2, 2020 uniform election date to postpone their election to the November 3, 2020 uniform election date, the Chancellor recommends that the Board of Trustees of Dallas County Community College District adopt the attached resolution postponing the May 2, 2020 Board of Trustees election to November 3, 2020.

Effective Date: Upon Board Approval

RESOLUTION POSTPONING
MAY 2, 2020
BOARD OF TRUSTEES ELECTION

WHEREAS, the Board of Trustees of Dallas County Community College District previously ordered an election to elect one (1) member of the Board of Trustees on May 2, 2020 in each of the Trustee Districts 5 and 6; and

WHEREAS, on March 13, 2020 Texas Governor Abbott issued a proclamation certifying that COVID-19 poses an imminent threat of disaster in the state and declaring a state of emergency for all counties in Texas; and

WHEREAS, on March 18, 2020 Texas Governor Abbott issued a proclamation suspending certain sections of the Texas Election Code and the Texas Water Code, and authorizing political subdivisions that would otherwise hold elections on May 2, 2020 to move their general and special elections for 2020 only to the next uniform election date, occurring on November 3, 2020; and

WHEREAS, the State of Texas, the City of Dallas and Dallas County each have since issued orders related to the virus and imposing restrictions on business activity to protect the health and safety of the public and slow the spread of the virus; and

WHEREAS, the Board of Trustees of Dallas County Community College District has reviewed each of the referenced proclamations and orders; and

WHEREAS, in recognition of the current state of emergency, and the authority granted by the March 18, 2020 proclamation, the Board of Trustees of Dallas County Community College District desires to exercise its authority to postpone the conduct of the May 2, 2020 Board of Trustees election; NOW THEREFORE;

BE IT RESOLVED BY THE BOARD OF TRUSTEES OF DALLAS COUNTY COMMUNITY COLLEGE DISTRICT:

Section 1. That the May 2, 2020 election to elect one (1) member of the Board of Trustees of Dallas County Community College District in each of the Trustee Districts 5 and 6 shall be postponed to the next uniform election date, occurring on Tuesday, November 3, 2020.

Section 2. That all candidate filings for the May 2, 2020 election will remain valid for the November 3, 2020 election date and that the candidate filing period will not be reopened for the November 3, 2020 election date.

Section 3. That all applications for ballot by mail submitted for the May 2, 2020 election for reasons of being over age 65 or due to disability will remain valid for the November 3, 2020 election date.

Section 4. That applications for ballot by mail submitted for the May 2, 2020 election based on expected absence from the county will not be valid for the November 3, 2020 election date.

Section 5. That pursuant to Article XVI, Section 17 of the Texas Constitution, the individuals who currently hold seats on the Board of Trustees of Dallas County Community College District and who are scheduled to be on the ballot for the May 2, 2020 election will continue to exercise the duties of those offices until their successors are duly qualified, following the November 3, 2020 election date.

Section 6. That the last day to register to vote for the November 3, 2020 election is Monday, October 5, 2020 and that the last day to apply for a ballot by mail is Friday, October 3, 2020.

Section 7. That early voting by personal appearance for the November 3, 2020 election begins Monday, October 19, 2020 and ends Friday, October 30, 2020.

Section 8. That simultaneously with the adoption of this resolution, a Spanish version of this resolution is adopted.

Section 9. That this resolution is effective upon adoption by the Board of Trustees of Dallas County Community College District and shall be signed by the Chair of the Board of Trustees.

DALLAS COUNTY COMMUNITY COLLEGE
DISTRICT

By: _____
Diana Flores, Chair
Board of Trustees

ATTEST:

By: _____
Joe D. May, Secretary
Board of Trustees

Adopted: April 7, 2020

**RESOLUCIÓN PARA POSPONER
LA ELECCIÓN DE LA JUNTA DE SÍNDICOS
DEL 2 DE MAYO DE 2020**

CONSIDERANDO que, la Junta de Síndicos del Distrito de Colegios Comunitarios del Condado de Dallas ordenó previamente una elección para elegir a un (1) miembro de la Junta de Síndicos el 2 de mayo de 2020 en cada uno de los Distritos de Síndicos 5 y 6; y

CONSIDERANDO que, el 13 de marzo de 2020, el gobernador de Texas, Abbott, emitió una proclamación que certifica que COVID-19 representa una amenaza inminente de desastre en el estado y declara estado de emergencia para todos los condados de Texas; y

CONSIDERANDO que, el 18 de marzo de 2020, el gobernador de Texas, Abbott, emitió una proclamación que suspende ciertas secciones del Código Electoral de Texas y el Código del Agua de Texas, y autoriza subdivisiones políticas que de otro modo celebrarían elecciones el 2 de mayo de 2020 para cambiar sus elecciones generales y especiales para 2020 solo hasta la próxima fecha de elección uniforme, que tendrá lugar el 3 de noviembre de 2020; y

CONSIDERANDO que, el estado de Texas, la ciudad de Dallas y el condado de Dallas han emitido órdenes relacionadas con el virus e imponen restricciones a la actividad comercial para proteger la salud y la seguridad del público y retrasar la propagación del virus;

CONSIDERANDO que, la Junta de Síndicos del Distrito del Colegio Comunitario del Condado de Dallas ha revisado cada una de las proclamaciones y órdenes a las que se hace referencia; y

CONSIDERANDO que, en reconocimiento del estado de emergencia actual, y la autoridad otorgada por la proclamación del 18 de marzo de 2020, la Junta de Síndicos del Distrito de Colegios Comunitarios del Condado de Dallas desea ejercer su autoridad para posponer la elección de los miembros de la Junta del 2 de mayo de 2020; POR LO TANTO;

SE HA RESUELTO POR LA JUNTA DE SÍNDICOS DEL DISTRITO DE COLEGIOS COMUNITARIOS DEL CONDADO DE DALLAS:

Sección 1. Que la elección del 2 de mayo de 2020 para elegir a un (1) miembro de la Junta de Síndicos del Distrito de Colegios Comunitarios del Condado de Dallas en cada uno de los Distritos de Síndicos 5 y 6 se pospondrá a la próxima fecha de elección uniforme, que tendrá lugar el martes 3 de noviembre de 2020.

Sección 2. Que todas las postulaciones a la candidatura para la elección del 2 de mayo de 2020 seguirán siendo válidas para la fecha de elección del 3 de noviembre de 2020 y que el período de postulación de candidatos no se volverá a abrir para las elecciones del 3 de noviembre de 2020.

Sección 3. Que todas las solicitudes de boleta por correo presentadas para la elección del 2 de mayo de 2020 por ser mayor de 65 años o por discapacidad seguirán siendo válidas para las elecciones del 3 de noviembre de 2020.

Sección 4. Que las solicitudes de boleta por correo presentadas para las elecciones del 2 de mayo de 2020 basadas en la ausencia del condado prevista no serán válidas para las elecciones del 3 de noviembre de 2020.

Sección 5. Que conforme al Artículo XVI, Sección 17 de la Constitución de Texas, las personas que actualmente ocupan puestos en la Junta de Síndicos del Distrito de Colegios Comunitarios del Condado de Dallas y que están postuladas como candidatos en la boleta electoral para las elecciones del 2 de mayo de 2020 continúen ejerciendo las funciones de esos cargos hasta que sus sucesores estén debidamente calificados, después de las elecciones del 3 de noviembre de 2020.

Sección 6. Que el último día para registrarse para votar en las elecciones del 3 de noviembre de 2020 es el lunes 5 de octubre de 2020 y que el último día para solicitar una boleta por correo es el viernes 3 de octubre de 2020.

Sección 7. Que la votación anticipada en persona para la elección de noviembre 3, 2020 comienza el lunes 19 de octubre de 2020 y termina el viernes 30 de octubre de 2020.

Sección 8. Que simultáneamente con la adopción de esta resolución, se adopta una versión en español de las misma.

Sección 9. Que esta resolución entrará en vigor cuando sea adoptada por la Junta de Síndicos del Distrito de Colegios Comunitarios del Condado de Dallas y deberá ser firmada por el presidente de ésta.

DISTRITO DE COLEGIOS COMUNITARIOS DEL
CONDADO DE DALLAS

Por: _____
Diana Flores, Presidenta
Junta de Síndicos

AUTENTIFICADO:

Por: _____
Joe D. May, Secretario
Junta de Síndicos

Adoptado: 7 de Abril de 2020

INFORMATIVE REPORT NO. 8A

2nd Quarter Investment Transactions

The 2nd Quarter investment transactions are presented as provided by Board Policy CAK (Legal), which states: *Not less than quarterly, the investment officer shall prepare and submit to the Board a written report of investment transactions for all funds covered by the Public Funds Investment Act.*

The 2nd Quarter investment transaction report is typical for this phase of the annual financial cycle.

Dallas County Community College District
Investment Portfolio Summary Report
Activity for the 2nd Quarter Ended February 29, 2020

INVESTMENTS	QUARTER ENDING	MARKET VALUE	ACCRUED INTEREST	WEIGHTED AVERAGE MATURITY	YIELD TO MATURITY
Beginning Portfolio Balance	November 30, 2019	\$ 392,282,043	\$ 884,630	285	2.02%
Purchases		562,416,092			
Matured/Sold		(390,146,991)			
Market Value Change		475,106			
Ending Portfolio Balance	February 29, 2020	\$ 565,026,250	\$ 481,678	264	1.83%

This report is prepared in compliance with generally accepted accounting principles, the investment strategy expressed in the Investment Policy of the DCCCD Board of Trustees, and the Public Funds Investment Act, as amended.

/s/ John Robertson

John Robertson, Chief Financial Officer

/s/ Tiska Thomas

Tiska Thomas, Deputy Chief, Business Affairs

Investment Portfolio Transaction Report

Investment ID	Cusip No.	Description	Purchase Date	Maturity Date	Face Amount	Yield
Investment Pools						
73190		JPMC ACCESS DDA	3-Aug-10	N/A	\$ -	0.00%
73190		FROST CASH MGR DDA	1-Sep-13	N/A	10,294,763	0.50%
1111		TEXPOOL	30-Jul-90	N/A	275,648	1.58%
46		LOGIC (DEBT SERVICE F46)	14-Jan-14	N/A	3,335,012	1.76%
		LOGIC Op	19-Dec-12	N/A	35,754,291	1.76%
1111		LOGIC M&O	1-Nov-15	N/A	123,149,056	1.76%
1111		LONE STAR INVESTMENTS	3-Dec-12	N/A	97,702,052	1.76%
1111		TEXAS TERM	17-Nov-15	N/A	55,432,042	1.58%
		TEXAS CLASS	17-Nov-15	N/A	51,441,338	1.77%
1111		TEXSTAR 11110	23-Jun-03	N/A	329,073	1.62%
2003		TEXSTAR (TAX NOTE)	6-Aug-03	N/A	-	1.62%
2004		TEXSTAR (TAX NOTE)	6-Apr-04	N/A	-	1.62%
40-0		TEXSTAR (GO)	14-Sep-04	N/A	-	1.62%
40-1		TEXSTAR (CP)	9-Oct-07	N/A	-	1.62%
40-2		TEXSTAR (GO 2009)	5-Jun-09	N/A	-	1.62%
45		TEXSTAR 11130 (F45)	4-Mar-13	N/A	8,707,944	1.62%
Subtotal					\$ 386,421,220	
Commercial Paper						
17042-D	05968GE66	Commercial Paper	12-Nov-19	6-May-20	10,000,000	2.10%
17043-D	63873JEL0	Commercial Paper	10-Dec-19	20-May-20	10,000,000	1.88%
17044-D	2254EABM4	Commercial Paper	18-Dec-19	21-Feb-20	10,000,000	2.00%
17045-D	06742VBY6	Commercial Paper	9-Jan-20	29-Jun-20	10,000,000	1.88%
17046-D	87019RGA8	Commercial Paper	12-Feb-20	10-Jul-20	10,000,000	1.68%
Subtotal					\$ 40,000,000	
Treasury Securities						
13098-D	912828L32	U.S. T Notes	22-Feb-18	31-Aug-20	5,000,000	2.38%
13100-D	912828XY1	U.S. T Notes	20-Sep-18	30-Jun-20	10,000,000	2.79%
Subtotal					\$ 15,000,000	
Municipal Securities						
14004-P	798781A91	SAN MARCUS IDS	18-Dec-19	1-Aug-23	825,000	2.00%
14005-P	798781A91	SAN MARCUS IDS	18-Dec-19	1-Aug-22	890,000	1.90%
Subtotal					\$ 1,715,000	
Agency Securities						
16406	3134G9JW8	FHLMC	25-May-16	25-May-21		1.75%
16408	3134G9KB2	FHLMC	9-Jun-16	9-Jun-21		1.93%
16412	3134G9VL8	FHLMC	30-Jun-16	30-Jun-21		2.01%
16413	3134G9UX3	FHLMC	30-Jun-16	30-Jun-21		1.70%
16416	3136G4NE9	FNMA	29-Mar-17	29-Jun-20		1.75%
16421	3134GBXT4	FHLMC	27-Jul-17	27-Jul-20	5,325,000	1.70%
16422	3134GBXT4	FHLMC	27-Jul-17	27-Jul-20	1,385,000	1.70%
16432	3134GSTN5	FHLMC	17-Aug-18	17-Aug-22	10,000,000	3.00%
16433	3133EJG37	FFCB	15-Oct-18	15-Apr-20	5,000,000	2.85%
16435	3134GSU29	FHLMC	30-Jan-19	30-Jul-21		2.70%
16441	3134GTDB6	FHLMC	10-Apr-19	10-Apr-24	10,000,000	2.75%
16444	3133EKKF2	FHLB	5-Jun-19	5-Jun-23		2.62%
16445	3134GTYS6	FHLB	5-Jul-19	1-Jul-22	5,000,000	2.00%
16446	3130AGTGO	FHLB	26-Jul-19	24-Jan-20		2.43%
16447	3133EKL95	FFCB	6-Sep-19	6-Jun-22		2.01%
16448	3134GUAT7	FHLMC	13-Sep-19	13-Sep-21		2.07%
16449	3134GUKJ7	FHLMC	15-Oct-19	15-Oct-24	10,000,000	2.14%
16450	3134GUHP8	FHLMC	16-Oct-19	16-Oct-23	10,000,000	1.99%
16451	3133EK324	UBS	24-Oct-19	24-Jul-23		2.02%
16452	3134GUPB0	UBS	14-Nov-19	14-Aug-23		2.01%
16453	3134GU4S6	FHLMC	21-Jan-20	21-Apr-23	10,000,000	1.80%
16454	3134GU222	FHLMC	22-Jan-20	22-Jul-22	5,000,000	1.70%
16455	3135GOX65	FNMA	24-Jan-20	24-Jul-23	10,000,000	1.85%
16456	3133ELKJ2	FFCB	4-Apr-20	4-May-23	10,000,000	1.73%
16457	3133ELLY8	FFCB	5-Feb-20	5-May-23	10,000,000	1.72%
16458	3133ELKL7	FFCB	6-Feb-20	29-Apr-22	5,000,000	1.64%
16459	3133EJG37	FLMW1	12-Feb-20	12-Aug-21	10,000,000	1.55%
16460	313396ZM8	FHLMC		12-Aug-21	5,000,000	1.56%
Subtotal					\$121,710,000	
Portfolio Volume					\$564,846,220	

- TexSTAR yields vary daily. The Average Monthly Rate as of 11/30/19 was 1.6177%. The Average Monthly Rate as of 02/29/20 was 1.5641%
- TexPool yields vary daily. The Average Monthly Rate as of 11/30/19 was 1.6800%. The Average Monthly Rate as of 02/29/20 was 1.5821%
- LOGIC yields vary daily. The Average Monthly Rate as of 11/30/19 was 1.8429%. The Average Monthly Rate as of 02/29/20 was 1.7619%
- Lone Star yields vary daily. The Average Monthly Rate as of 11/30/19 was 1.93%. The Average Monthly Rate as of 02/29/20 was 1.7600%
- Texas Term yields vary daily. The Average Monthly Rate as of 11/30/19 was 1.74%. The Average Monthly Rate as of 02/29/20 was 1.5800%
- Texas Class yields vary daily. The Average Monthly Rate as of 11/30/19 was 1.94%. The Average Monthly Rate as of 02/29/20 was 1.7700%

Market Transactions

Investment ID	Market Value 11/30/19	Securities Purchased	Securities Matured/Sold	Market Value Change	Market Value 02/29/20
Investment Pools					
73190	9,626,605	668,158	\$ -	-	10,294,763
1111	274,549	1,099	-	-	275,648
46	4,626,047	49,711,890	(51,002,925)	-	3,335,012
	29,614,074	12,640,218	(6,500,000)	-	35,754,291
1111	30,664,292	307,628,830	(215,144,066)	-	123,149,056
1111	61,362,166	45,339,886	(9,000,000)	-	97,702,052
1111	39,748,138	20,683,904	(5,000,000)	-	55,432,042
	37,238,190	19,203,148	(5,000,000)	-	51,441,338
1111	327,796	1,277	-	-	329,073
45	8,674,168	33,775	-	-	8,707,944
Subtotal	\$ 222,156,026	\$ 455,912,185	\$ (291,646,991)	\$ -	\$ 386,421,220
Commercial Paper					
17042-D	9,907,364	-	\$ -	67,113	9,974,477
17043-D	-	9,916,300	\$ -	56,067	9,972,367
17044-D	-	9,964,069	\$ (10,000,000)	35,931	-
17045-D	-	9,910,894	\$ -	47,325	9,958,219
17046-D	-	9,932,122	\$ -	22,330	9,954,452
Subtotal	\$ 9,907,364	\$ 39,723,386	\$ (10,000,000)	\$ 228,765	\$ 39,859,515
Treasury Securities					
13098-D	4,988,670	-	-	15,235	5,003,905
13100-D	10,049,220	-	-	(16,020)	10,033,200
Subtotal	\$ 15,037,890	\$ -	\$ -	\$ (785)	\$ 15,037,105
Municipal Securities					
14004-P	-	882,346	-	20,138	902,484
14005-P	-	937,517	-	12,887	950,404
Subtotal	\$ -	\$ 1,819,863	\$ -	\$ 33,026	\$ 1,852,888
Agency Securities					
16406	1,248,040	-	(1,250,000)	1,960	-
16408	4,991,945	-	(5,000,000)	8,055	-
16412	4,998,420	-	(5,000,000)	1,580	-
16413	4,744,894	-	(4,750,000)	5,106	-
16416	5,000,180	-	(5,000,000)	(180)	-
16421	5,327,311	-	-	4,782	5,332,093
16422	1,385,601	-	-	1,244	1,386,845
16432	10,068,000	-	-	(1,390)	10,066,610
16433	5,023,180	-	-	(13,155)	5,010,025
16435	10,012,240	-	(10,000,000)	(12,240)	-
16441	10,022,430	-	-	(6,380)	10,016,050
16444	7,500,833	-	(7,500,000)	(833)	-
16445	5,005,530	-	-	5,275	5,010,805
16446	9,999,070	-	(10,000,000)	930	-
16447	9,978,040	-	(10,000,000)	21,960	-
16448	10,000,080	-	(10,000,000)	(80)	-
16449	9,926,720	-	-	83,210	10,009,930
16450	10,000,150	-	-	6,210	10,006,360
16451	9,994,880	-	(10,000,000)	5,120	-
16452	9,953,220	-	(10,000,000)	46,780	-
16453	-	10,000,000	-	15,020	10,015,020
16454	-	5,000,000	-	6,775	5,006,775
16455	-	10,000,000	-	20,520	10,020,520
16456	-	10,000,000	-	650	10,000,650
16457	-	10,000,000	-	790	10,000,790
16458	-	4,998,700	-	2,105	5,000,805
16459	-	9,995,000	-	5,830	10,000,830
16460	-	4,966,958	-	4,457	4,971,415
Subtotal	\$ 145,180,764	\$ 64,960,658	\$ (88,500,000)	\$ 214,100	\$ 121,855,523
Portfolio Volume	\$ 392,282,044	\$ 562,416,092	\$ (390,146,991)	\$ 475,106	\$ 565,026,250

- TexSTAR yields vary daily. The Average Monthly Rate as of 11/30/19 was 1.6177%. The Average Monthly Rate as of 02/29/20 was 1.5641%
- TexPool yields vary daily. The Average Monthly Rate as of 11/30/19 was 1.6800%. The Average Monthly Rate as of 02/29/20 was 1.5821%
- LOGIC yields vary daily. The Average Monthly Rate as of 11/30/19 was 1.8429%. The Average Monthly Rate as of 02/29/20 was 1.7619%
- Lone Star yields vary daily. The Average Monthly Rate as of 11/30/19 was 1.93%. The Average Monthly Rate as of 02/29/20 was 1.7600%
- Texas Term yields vary daily. The Average Monthly Rate as of 11/30/19 was 1.74%. The Average Monthly Rate as of 02/29/20 was 1.5800%
- Texas Class yields vary daily. The Average Monthly Rate as of 11/30/19 was 1.94%. The Average Monthly Rate as of 02/29/20 was 1.7700%

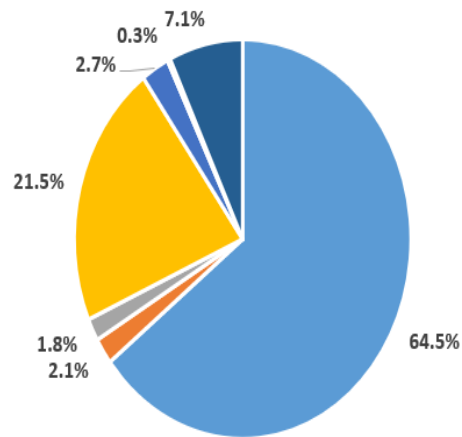
Investment Portfolio Market Transaction Summary

Security Type	Market Value 11/30/19	Securities Purchased	Securities Matured / Sold	Market Value Change	Market Value 2/29/20	Face Value 2/29/20
Investment Pools	\$ 222,156,026	\$ 455,912,185	\$ (291,646,991)	\$ -	\$ 386,421,220	\$ 386,421,220
Commercial Paper	9,907,364	39,723,386	(10,000,000)	228,765	39,859,515	40,000,000
Treasury Securities	15,037,890	-	-	(785)	15,037,105	15,000,000
Municipal Securities	-	1,819,863	-	33,026	1,852,888	1,715,000
Agency Securities	145,180,764	64,960,658	(88,500,000)	214,100	121,855,523	121,710,000
Portfolio Total	\$ 392,282,044	\$ 562,416,092	\$ (390,146,991)	\$ 475,106	\$ 565,026,250	\$ 564,846,220

Investment Portfolio By Percentage

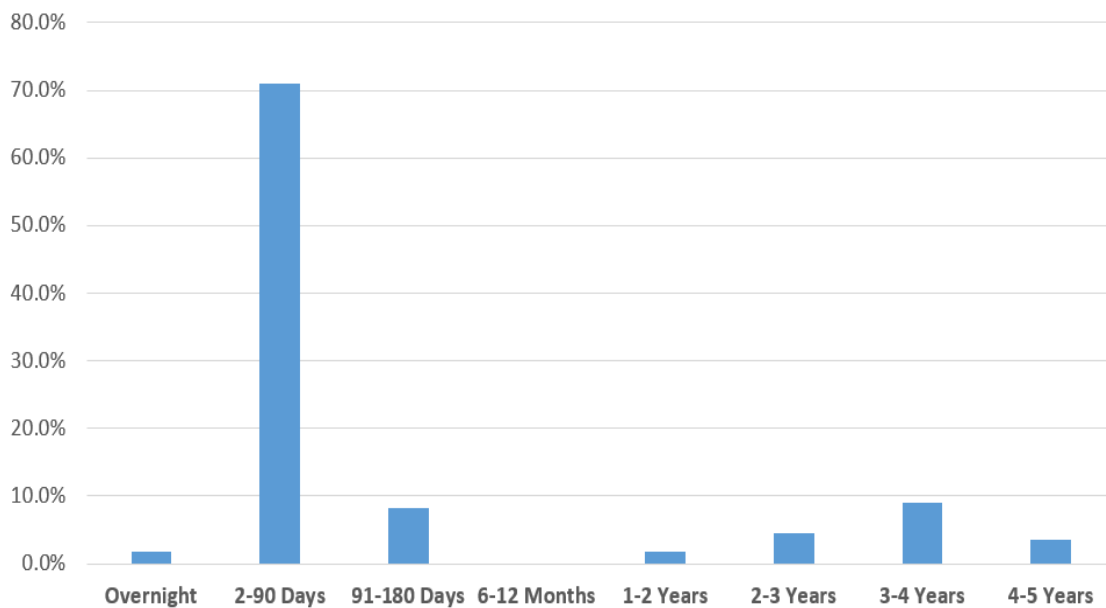
Security Type	Market Value 11/30/19	Securities Purchased	Securities Matured / Sold	Market Value Change	Market Value 2/29/20	Face Value 2/29/20
Investment Pools	\$ 222,156,026	\$ 455,912,185	\$ (291,646,991)	\$ -	\$ 386,421,220	\$ 386,421,220
Commercial Paper	9,907,364	39,723,386	(10,000,000)	228,765	39,859,515	40,000,000
Treasury Securities	15,037,890	-	-	(785)	15,037,105	15,000,000
Municipal Securities	-	1,819,863	-	33,026	1,852,888	1,715,000
Agency Securities	145,180,764	64,960,658	(88,500,000)	214,100	121,855,523	121,710,000
Portfolio Total	\$ 392,282,044	\$ 562,416,092	\$ (390,146,991)	\$ 475,106	\$ 565,026,250	\$ 564,846,220

Allocation by Security Type As of 2/29/2020

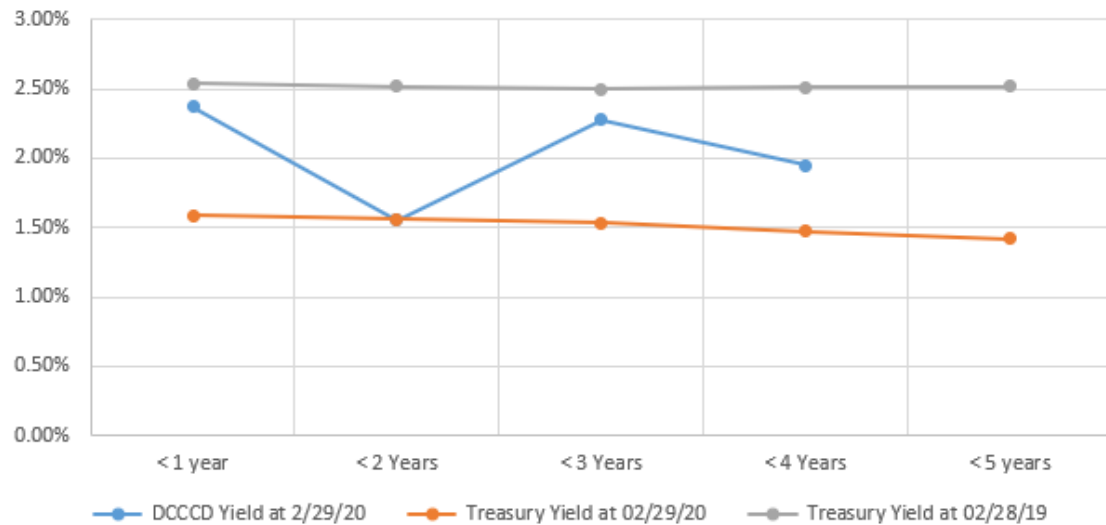


■ Unrestricted Investment Pools
 ■ Debt Service Investment Pools
 ■ Bank Deposits
■ U.S. Government Agency Bonds
 ■ U.S. Treasury Bonds
 ■ State and Municipal Bonds
■ Commercial Paper

Maturity Distribution Total Portfolio As of 2/29/2020



**DALLAS COUNTY COMMUNITY COLLEGE
DISTRICT
Securities Yield - To - Maturity Analysis by year
(Excluding Pools)**



INFORMATIVE REPORT NO. 8B

Quarterly Budget Book Vendor Summary

Listed below is a summary of changes made to vendors listed in the original Budget Book submitted for the 2019- 2020.

	Location	Page (#), Line (#)
IT Closet Upgrade - Mountain View College RFBC # 2019-13	MVC	Page 44, Line 13 (2019-2020)
<u>Award</u> \$6,774,000	<u>Vendor</u> Mart, Inc.	
<u>Comments</u> Contract for IT closet upgrades at MVC.		
IT Closet Upgrade – Cedar Valley College RFBC # 2019-16	CVC	Page 44, Line 11 (2019-2020)
<u>Award</u> \$7,119,379	<u>Vendor</u> Mart, Inc.	
<u>Comments</u> Contract for IT Closet Upgrades at CVC.		
Cooling Tower Replacement – Mountain View College REQ #1DG5370	MVC	Page 41, Line 22 (2019-2020)
<u>Award</u> \$1,172,960	<u>Vendors</u> Infinity Contractors CO-OP Buyboard	
<u>Comments</u> Contract for Cooling Tower Replacement at MVC.		
AHU Replacement and Upgrades – Richland College REQ #8DF8432	RLC	Page 52, Line 114 (2019-2020)
<u>Award</u> \$1,831,128	<u>Vendors</u> Trane CO-OP US Communities	
<u>Comments</u> Contract for Air Handler Unit Upgrades at RLC.		

Cooling Tower Replacement – Mountain View College		MVC	Page 41, Line 22
REQ #1DG5370			(2019-2020)
<u>Award</u>	<u>Vendors</u>		
\$1,172,960	Infinity Contractors CO-OP Buyboard		
<u>Comments</u>			
Contract for Cooling Tower Replacement at MVC.			

Furniture - Districtwide		DW	Page 83, Line 26
RFB #2019-9 and #2019-24			(2019-2020)
<u>Award</u>	<u>Vendors</u>		
4,000,000	Business Interiors Computer Comforts, Inc. Ergogenesis Workplace Solutions, LLC Facility Interiors, Inc. G. L. Seaman Hertz Furniture Systems, LLC Intelligent Interiors Interior resources Group Lone Star Furnishings, LLC Mity-Lite Plano Office Supply Sedia Systems, Inc. Southwest Solutions Group Texas Furniture Source, Inc. VARI Sales Corporation Virco Inc. Wenger Corporation Wilson Office Interiors Workplace Solutions WRG, LLC		
<u>Comments</u>			
Classroom, office, lounge areas, common areas, etc. for new furniture district wide as needed.			

Construction Science Building – North Lake College		NLC	Page 43, Line 10
RFCSP #2019-17			(2019-2020)
<u>Award</u>	<u>Vendor</u>		
\$25,500,000	Joeris		
<u>Comments</u>			
Contract for Construction Science Building at NLC.			

Richland Cable Installers
RFP #2019-22

RLC

Page 44, Line 13
(2019-2020)

Award

\$2,513,220

Vendors

Network Cabling Services

Comments

Contract for Cabling Services for the IDF Project at Richland College.

INFORMATIVE REPORT NO. 8C

Current Funds Operating Budget Report for February 2020

The Chancellor presents the report of the current funds operating budget for review for the period ending February 29, 2020 with comments as follows:

Expenditures

Supplies and Equipment reflect a higher percentage due to Facilities Improvement Plan projects as well as other maintenance projects that are ahead of schedule.

DALLAS COUNTY COMMUNITY COLLEGE DISTRICT
2019-20 CURRENT FUNDS OPERATING BUDGET

REVENUES & EXPENDITURES

Year-to-Date February 29, 2020

	Approved Budget	Allocated Budget	Year-To-Date Actuals	Percent Budget
REVENUES				
State Appropriations	\$ 94,495,215	\$ 94,495,215	\$ 40,703,542	43.1%
Tuition	135,475,137	135,475,137	107,114,351	79.1%
Less: Waivers & Discounts	(21,904,878)	(21,904,878)	(13,072,467)	59.7%
Less: TPEG Set Aside	(6,897,912)	(6,897,912)	(5,191,453)	75.3%
Total Net Tuition	106,672,347	106,672,347	88,850,431	83.3%
Taxes	278,882,917	278,882,917	274,094,709	98.3%
Federal Grants & Contracts (Work Study)	1,145,477	1,145,477	610,320	53.3%
Investment Income	3,900,000	3,900,000	3,352,465	86.0%
General Revenue	2,057,328	2,057,328	1,278,134	62.1%
Subtotal Revenue	487,153,284	487,153,284	408,889,601	83.9%
Enrollment Growth				
Transfers-In From Other Funds	8,341,412	8,341,412	n/a	n/a
Special Items	42,160,405	42,160,405	n/a	n/a
TOTAL REVENUE	537,655,101	537,655,101	408,889,601	76.1%

	Approved Budget	Allocated Budget	Year-to-Date Actuals	Percent Budget
EXPENSES				
Salaries & Wages	\$ 299,402,667	\$ 300,445,860	\$ 152,548,812	50.8%
Staff Benefits	36,675,429	36,544,557	17,941,536	49.1%
Purchased Services	33,263,055	45,034,217	28,401,311	63.1%
Operating Expenses	66,417,898	71,435,634	32,695,434	45.8%
Supplies & Equipment	34,698,524	57,111,678	29,668,232	51.9%
Provisions (See Summary Below)	50,920,405	6,554,900	n/a	n/a
Subtotal Expenses	521,377,978	517,126,846	261,255,325	50.5%
Transfers to Other Funds:				
Institutional Matching - Contracts/Grants	875,000	877,675	1,105,170	125.9%
Auxiliary Fund	9,902,123	9,924,404	9,924,404	100.0%
Capital Budget Projects	5,500,000	9,726,176	9,726,176	100.0%
TOTAL EXPENSES	537,655,101	537,655,101	282,011,075	52.5%

	Approved	Allocated Budget	Adjustments	Current Unallocated
PROVISIONS SUMMARY:				
Compensation	\$ 1,000,000	\$ -	\$ -	\$ 1,000,000
Dallas Promise	500,000	-	-	500,000
Level-Up Scholarship	835,000	-	-	835,000
Program & Pathways	6,425,000	-	(2,205,100)	4,219,900
Special Items	42,160,405	(42,160,405)	-	-
TOTAL PROVISIONS	50,920,405	(42,160,405)	(2,205,100)	6,554,900

	Prior Month Balance	Current Month Net Change	Current Month Balance	Year-to-Date Net Change
CASH ON HAND				
Pools & Banks	\$ 400,660,093	\$ (17,573,886)	\$ 383,086,207	\$ 114,746,223
Commerical Paper	39,823,907	35,608	39,859,515	19,907,773
Total Cash	440,484,000	(17,538,278)	422,945,722	134,653,996

DALLAS COUNTY COMMUNITY COLLEGE DISTRICT
2019-20 CURRENT FUNDS OPERATING BUDGET

REVENUES & EXPENDITURES

Year-to-Date - 50.0% of Fiscal Year Elapsed

UNRESTRICTED FUND

REVENUES

	February 29, 2020			February 28, 2019		
	Allocated Budget	Year-to-Date Actuals	Percent Budget	Approved Budget	Year-to-Date Actuals	Percent Budget
State Appropriations	\$ 94,495,215	\$ 40,703,542	43.1%	\$ 87,722,604	\$ 37,791,319	43.1%
Tuition	135,475,137	\$ 107,114,351	79.1%	136,825,161	106,999,904	78.2%
Less: Waivers & Discounts	(21,904,878)	\$ (13,072,467)	59.7%	(19,361,133)	(11,993,208)	61.9%
Less: TPEG Set Aside	(6,897,912)	\$ (5,191,453)	75.3%	(6,972,463)	(4,967,194)	71.2%
Total Net Tuition	106,672,347	88,850,431	83.3%	110,491,565	90,039,502	81.5%
Taxes for Current Operations	278,882,917	274,094,709	98.3%	260,739,716	253,149,460	97.1%
Work Study	1,145,477	610,320	53.3%	1,048,960	385,479	36.7%
Investment Income	3,900,000	3,352,465	86.0%	4,341,572	3,239,223	74.6%
General Revenue	2,057,328	1,278,134	62.1%	1,974,913	1,162,740	58.9%
SUBTOTAL	487,153,284	408,889,601	83.9%	466,319,330	385,767,723	82.7%
Transfers-In From Other Funds	8,341,412	n/a	n/a	9,889,328	n/a	n/a
Special Items	42,160,405	-	-	35,559,452	-	-
TOTAL REVENUES	537,655,101	408,889,601	76.1%	511,768,110	385,767,723	75.4%

EXPENSES

	February 29, 2020			February 28, 2019		
	Allocated Budget	Year-to-Date Actuals	Percent Budget	Approved Budget	Year-to-Date Actuals	Percent Budget
Salaries & Wages	\$ 300,445,860	\$ 152,548,812	50.8%	\$ 289,966,600	\$ 145,426,390	50.2%
Staff Benefits	36,544,557	17,941,536	49.1%	36,065,030	17,312,579	48.0%
Purchased Services	45,034,217	28,401,311	63.1%	34,113,533	20,705,415	60.7%
Operating Expenses	71,435,634	32,695,434	45.8%	71,471,787	32,150,215	45.0%
Supplies & Equipment	57,111,678	29,668,232	51.9%	32,739,056	11,477,109	35.1%
Provisions (See Summary Below)	6,554,900	n/a	0.0%	17,811,748	n/a	0.0%
Subtotal Expenses	517,126,846	261,255,325	50.5%	482,167,755	227,071,708	47.1%
Transfers to Other Funds:						
Institutional Matching - Contracts/Grants	877,675	1,105,170	n/a	374,434	32,981	n/a
Auxiliary Fund	9,924,404	9,924,404	100.0%	9,935,502	9,935,502	100.0%
Capital Budget Projects	9,726,176	9,726,176	100.0%	19,290,419	19,290,419	100.0%
TOTAL EXPENSES	537,655,101	282,011,075	52.5%	511,768,110	256,330,610	50.1%

	Approved	Year-to-Date Allocation	Balance	Approved	Year-to-Date Allocation	Balance
Provision Summary	\$ 50,920,405	(42,160,405)	8,760,000	\$ 45,138,212	(27,326,464)	17,811,748

INFORMATIVE REPORT NO. 8D

Monthly Award and Change Order Summary

Listed below are the awards and change orders approved by the Chief Financial Officer in February 2020.

CHANGE ORDERS

VAI Architects, Inc. El Centro West Atrium Addition – ECC Purchase Order No. B35240		Change Order No. 2
<u>Scope</u> Drawings and specifications to add an atrium to the El Centro College West Campus.		
<u>Change</u> This additional service adds plumbing and sink revisions to meet campus standardization. It also allows for City of Dallas building permits.		
Original Contract Amount		\$187,250
Change Order Limit/Contingency		N/A
Prior Change Order Total Amounts		\$146,225
Net Increase this Change Order		\$17,985
Revised Contract Amount		\$351,460

Corgan Associates New Modular Buildings – RLC Purchase Order No. B35289		Change Order No. 2
<u>Scope</u> Provide architectural and engineering design for new modular buildings at Richland College.		
<u>Change</u> This additional service provides for two new sanitary sewer easements for the modular building complex per the City of Dallas requirements.		
Original Contract Amount		\$135,000
Change Order Limit/Contingency		N/A
Prior Change Order Total Amounts		\$12,000
Net Increase this Change Order		\$6,000
Revised Contract Amount		\$153,000

Reed, Wells, Benson and Company
Modular Building Feasibility Study – RLC
Purchase Order No. B35161 Change Order No. 1

Scope:

Feasibility study to provide electrical power to five modular buildings at Richland College.

Change

This additional service provides for construction drawings and specifications required for procurement including electrical, plumbing, and sewer upgrades.

Original Contract Amount	\$7,600
Change Order Limit/Contingency	N/A
Prior Change Order Total Amounts	\$0
Net Increase this Change Order	\$18,000
Revised Contract Amount	\$25,600

A.C.I.S – Bid #12506
Power System Upgrades – RLC
Purchase Order No. B35072 Change Order No. 1

Scope

Replace Federal Pacific electric panels and motor control center equipment in the central plant at Pecos Hall.

Change

This change order moves the installation from winter break to spring break for convenience. The contractor loses five days which results in needed overtime.

Original Contract Amount	\$354,854
Change Order Limit/Contingency	\$53,228
Prior Change Order Total Amounts	\$0
Net Increase this Change Order	\$4,904
Revised Contract Amount	\$359,758

Infinity Contractors Intl Ltd – Bid #RFBC 2019-12
Various Mechanical Projects – MVC
Purchase Order No. B37206 Change Order No. 1

Scope

Various mechanical maintenance projects at Mountain View College including replacement of air handling unit J-1.

Change

This change order is for labor, material and equipment for the installation of two four-inch butterfly valves in the chilled water supply and return. The valves will allow the remainder of the system to operate while replacing the old unit.

Original Contract Amount	\$497,771
Change Order Limit/Contingency	\$74,666
Prior Change Order Total Amounts	\$0
Net Increase this Change Order	\$6,337
Revised Contract Amount	\$504,108

J.C. Commercial – Bid #12527

Mechatronics Lab – EFC

Purchase Order No. B35141

Change Order No. 4

Scope

Renovation of approximately 1117 sq. ft. of space to create a new mechatronics lab at Eastfield College.

Change

This change order provides for a contract extension due to delays in manufacturing of items. It also provides for panic hardware devices, removable mullion, and rim exit devices per the City of Mesquite requirements.

Original Contract Amount	\$1,342,777
Change Order Limit/Contingency	\$201,417
Prior Change Order Total Amounts	\$147,925
Net Increase this Change Order	\$17,020
Revised Contract Amount	\$1,507,722

JM Construction Solutions – Bid #12557

Flooring Replacement – NLC

Purchase Order No. B12557

Change Order No. 1

Scope

Replace carpet in classrooms and corridors of building A, C, J, K and P at North Lake College.

Change

This change order provides for an increased area of porcelain tile due to extremely aged carpet in certain areas.

Original Contract Amount	\$806,950
Change Order Limit/Contingency	\$121,043

Prior Change Order Total Amounts	\$0
Net Increase this Change Order	\$23,002
Revised Contract Amount	\$829,952

Mart Inc. – Bid #RFBC-2019-3

IT Equipment Room - RLC

Purchase Order No. B37103

Change Order No. 1

Scope

IT equipment room remodel project at Richland College.

Change

This deductive change order allows for the removal of building permit cost from the contract sum. DCCCD paid the required fees as the City of Dallas require payment before the city's review of permit documents.

Original Contract Amount	\$4,199,717
Change Order Limit/Contingency	\$629,958
Prior Change Order Total Amounts	\$0
Net Decrease this Change Order	-\$42,023
Revised Contract Amount	\$4,157,694

Mart Inc. – Tips Contract #170201

Sanders Estes HVAC & Welding Lab – CVC

Purchase Order No. B35233

Change Order No. 3

Scope

Renovation of existing interior space at Sanders Estes Correctional Center to create a HVAC and a welding Lab.

Change

This change order provides for an increase in the cost construction materials for the structural/concrete work.

Original Contract Amount	\$494,000
Change Order Limit/Contingency	\$74,100
Prior Change Order Total Amounts	-\$135,345
Net Increase this Change Order	\$50,063
Revised Contract Amount	\$408,719

Facilities Maintenance Projects
Status Report for the Period Ending February 29, 2020

Campus	Project Description	Project Budget	Contracts Awarded	Start Date	Completion Date
BHC	Upgrade Electrical Meters	\$ 147,345	\$ 149,842	4/2017	4/2020
	Replace Hot Water Storage Tanks	67,068	67,068	4/2017	4/2020
	Replace Air Compressors	14,743	14,743	4/2017	4/2020
	Replace PVI Boilers	344,363	338,120	4/2017	4/2020
	Refurbish Expansion Tanks at Central Plant	25,577	25,577	4/2017	4/2020
		<u>599,096</u>	<u>595,350</u>		
CVC	Upgrade of Exterior Lighting	108,632	5,992	2/2019	8/2020
	Replace Campus Signage	164,748	155,150	4/2019	9/2020
	TDJC Industrial and Welding Lab	548,403	408,719	7/2017	3/2020
		<u>821,783</u>	<u>569,861</u>		
DSC	District Wide Cabling Infrastructure Enhancements	32,435,900	10,977,280	5/2017	7/2020
	District Wide Asbestos and Environmental Services	100,401	100,401	11/2017	On-Going
		<u>32,536,301</u>	<u>11,077,681</u>		
ECC	Replace Exterior Doors	89,657	75,220	5/2016	3/2020
	Door/Lock Replacement	213,538	210,094	5/2016	3/2020
	Replace Windows/Installation	142,884	136,715	5/2016	3/2020
	Repair Stucco Over Deck	112,154	87,268	5/2016	3/2020
		<u>558,233</u>	<u>509,297</u>		
EFC	Weatherproof Exterior Windows, Phase III	439,960	10,012	5/2016	5/2020
	Stem Lab Renovation	125,000	125,000	3/2019	5/2020
	Installation of Family Restroom	239,000	14,980	12/2019	4/2020
	Mechatronics Lab Renovation	1,483,572	1,500,592	2/2019	4/2020
	Chemistry Lab Renovation	1,888,511	1,888,511	3/2019	4/2020
		<u>4,176,043</u>	<u>3,539,095</u>		
MVC	Replace Crawl Space Pipe Insulation	1,372,900	124,267	5/2017	8/2020
	Upgrade Breaker Panels	678,950	163,415	5/2017	8/2020
	Repaint Exterior Thermal Storage Tank	58,948	72,181	5/2017	8/2020
	Upgrade Lighting System	549,160	69,085	5/2017	8/2020
	Upgrade Distribution Panels at East and West Campus	468,476	115,035	5/2017	8/2020
	Upgrade Air Handling Units	274,580	366,725	5/2017	8/2020
	Electrical Substation Maintenance	67,895	74,606	5/2017	8/2020
	Replace Return Air Handling Units Buildings J and F	200,000	358,082	5/2017	8/2020
	Replace and Intergrate Fan Motors and Drives	101,843	20,183	5/2017	8/2020
	Upgrade Campus Clock System	42,095	50,649	5/2017	8/2020
		<u>3,814,847</u>	<u>1,414,228</u>		
NLC	Renovate Building Entrances	746,845	374,924	5/2016	5/2020
	Repair Drainage System at Building L	135,790	4,352	2/2017	8/2020
	Repair Drainage System at Buildings J and K	101,843	3,580	2/2017	8/2020
	Replace Exterior Stairs at Buildings F and T	109,832	3,863	7/2018	8/2020
	Replace Caulk Joints	137,290	3,090	7/2018	8/2020
	Upgrade Baseball Dugouts	122,211	2,781	7/2018	4/2020
	Refurbish Tennis Courts	108,632	2,472	7/2018	4/2020
	Upgrade Science Lab Safety Control System	43,068	43,068	6/2017	3/2020
	Installation of Gender Neutral Restroom	30,000	5,350	5/2019	6/2020
	Flooring Replacement	45,389	44,453	9/2017	4/2020
	Corridor Refurbishment	735,121	670,363	9/2017	6/2020
	Police Department Remodel	50,000	45,000	2/2020	3/2020
	Re-Carpet the Cafeteria	201,041	130,601	9/2017	6/2020
	Re-Carpet Bldg C	96,133	77,271	9/2017	6/2020
		<u>2,663,195</u>	<u>1,411,167</u>		
RLC	Replace Federal Pacific Electric Panels	149,369	111,931	2/2016	6/2020
	Replace Central Plant Motor Control Center	142,580	263,930	2/2016	6/2020
	Fannin Hall Renovation	738,000	594,739	8/2017	4/2020
	Modular Buildings	3,600,000	178,600	8/2020	8/2020
	Alamito Hall Reconfiguration of First & Second Floor	1,570,811	1,570,811	2/2017	6/2020
		<u>6,200,760</u>	<u>2,720,011</u>		
		<u>51,370,258</u>	<u>21,836,690</u>		

INFORMATIVE REPORT NO. 8F

Contracts for Educational Services

The Chancellor presents the report of contracts for educational services entered not the colleges in the past month.

BROOKHAVEN COLLEGE - \$77,940	
Ford	Automotive
Dallas Fire and Rescue	Orientation
Dallas Fire and Rescue	Customer Service and EMS

CEDAR VALLEY COLLEGE - \$4,500	
KLLM	Co-enrollment in Logistics Training
City-Wide Community Development	Introduction to Business Logistics/MSSC Certified Logistics

EASTFIELD COLLEGE – \$850	
PPG	Auto Body Paint
Electric, Inc.	Electrical CEU

EL CENTRO COLLEGE – \$45,265	
Dallas Police Department	Academy and In-Service Training
Dallas PD Basic Training Academy	Emergency Medical Assistance
University Emergency Medical Response	Emergency Medical Technician

MOUNTAIN VIEW COLLEGE – \$129,329	
AT&T	Introduction to Telecommunications

NORTH LAKE COLLEGE - \$126,120	
Construction Education Foundation	CE Courses
TEXO	CE Courses

Contracts for Educational Services Reported in 2019-20

	<u>BHC</u>	<u>CVC</u>	<u>EFC</u>	<u>ECC</u>	<u>MVC</u>	<u>NLC</u>	<u>RLC</u>	<u>Total</u>
September 2019	\$ 7,952	\$ 1,840	\$ 60,305	\$ 41,620	\$ 207,237	\$ 152,650	\$ 11,720	\$ 483,324
October 2019	\$ 100,204	\$ 13,862	\$ 20,726	\$ 11,565	\$ 47,969	\$ 17,212	\$ 18,465	\$ 230,003
November 2019	\$ 5,467	\$ 31,946	\$ 7,680	\$ 8,055	\$ 78,648	\$ 12,640	\$ 18,283	\$ 162,719
December 2019	\$ 7,455	\$ 4,500	\$ 0	\$ 0	\$ 0	\$ 9,842	\$ 9,280	\$ 31,077
January 2020	\$ 12,477	\$ 4,500	\$ 17,116	\$ 8,470	\$ 58,543	\$ 183,810	\$ 27,956	\$ 312,872
February 2020	\$ 77,940	\$ 18,218	\$ 850	\$ 45,265	\$ 129,329	\$ 126,120	\$ 23,710	\$ 421,432
March 2020	\$	\$	\$	\$	\$	\$	\$	\$
April 2020	\$	\$	\$	\$	\$	\$	\$	\$
May 2020	\$	\$	\$	\$	\$	\$	\$	\$
June 2020	\$	\$	\$	\$	\$	\$	\$	\$
July 2020	\$	\$	\$	\$	\$	\$	\$	\$
August 2020	\$	\$	\$	\$	\$	\$	\$	\$
Total to Date	\$ 211,495	\$ 74,866	\$ 106,677	\$ 114,975	\$ 521,726	\$ 502,274	\$ 109,414	\$ 1,641,427

Contracts for Educational Services Reported in Fiscal Years 2012-13 through 2018-19

<u>Campus</u>	<u>2012-13</u>	<u>2013-14</u>	<u>2014-15</u>	<u>2015-16</u>	<u>2016-17</u>	<u>2017-18</u>	<u>2018-19</u>
BHC	\$ 301,369	\$ 195,018	\$ 210,171	\$ 172,151	\$ 448,589	\$ 453,890	\$ 453,422
CVC	\$ 109,913	\$ 188,340	\$ 174,546	\$ 4,420	\$ 223,423	\$ 43,287	\$ 129,157
EFC	\$ 51,800	\$ 20,225	\$ 10,130	\$ 175,095	\$ 94,216	\$ 76,600	\$ 52,413
ECC	\$ 290,895	\$ 269,327	\$ 444,171	\$ 489,753	\$ 443,500	\$ 264,370	\$ 105,500
MVC	\$ 89,876	\$ 167,566	\$ 252,798	\$ 377,121	\$ 310,452	\$ 175,657	\$ 367,697
NLC	\$ 494,958	\$ 497,515	\$ 519,540	\$ 740,256	\$ 691,962	\$ 726,409	\$ 768,763
RLC	\$ 204,246	\$ 220,229	\$ 210,637	\$ 144,972	\$ 145,488	\$ 198,066	\$ 129,193
Total	\$1,543,057	\$1,558,220	\$1,821,993	\$2,103,768	\$2,357,630	\$1,938,279	\$ 2,006,145

INFORMATIVE REPORT NO. 8G

Resignations and Retirements

The Chancellor confirms acceptance of the following resignations and retirements.

RESIGNATIONS – 5

Robert Zito	District Office
Police Lieutenant	<u>Effective Date:</u> May 31, 2020
<u>Length of Service:</u> 16 years	<u>Reason for resigning:</u> Personal Reasons.

Dr. Janice Hicks	Eastfield College
Dean, Student Success	<u>Effective Date:</u> March 24, 2020
<u>Length of Service:</u> 5 years	<u>Reason for resigning:</u> Accepted a position at Odessa College.

Rebecca Knapp	Eastfield College
Associate Dean	<u>Effective Date:</u> <u>January 24, 2020</u>
<u>Length of Service:</u> 1 years	<u>Reason for resigning:</u> Accepted a position at Grayson College.

Chrisrina Umpierre	El Centro College
Instructor-Nursing	<u>Effective Date:</u> <u>January 31, 2020</u>
<u>Length of Service:</u> 5 year	<u>Reason for resigning:</u> Personal Reasons.

Ryan McMahon	Mountain View College
Instructor-Government	<u>Effective Date:</u> <u>July 1, 2020</u>
<u>Length of Service:</u> 6 year	<u>Reason for resigning:</u> Personal Reasons.

RETIREMENTS – 4

Curtis E. Black	District Office
Police Lieutenant	<u>Effective Date:</u> January 31, 2020
<u>Length of Service:</u> 15 years	

Dr. Susan Wyatt	Eastfield College
Instructor-Human Development	<u>Effective Date:</u> June 2, 2020
<u>Length of Service:</u> 31 years	

Michael Santiago	Eastfield College
Instructor-Criminal Justice	<u>Effective Date:</u> August 31, 2020
<u>Length of Service:</u> 13 years	

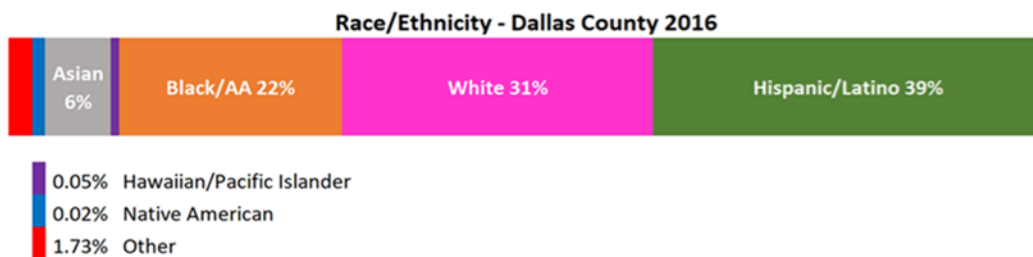
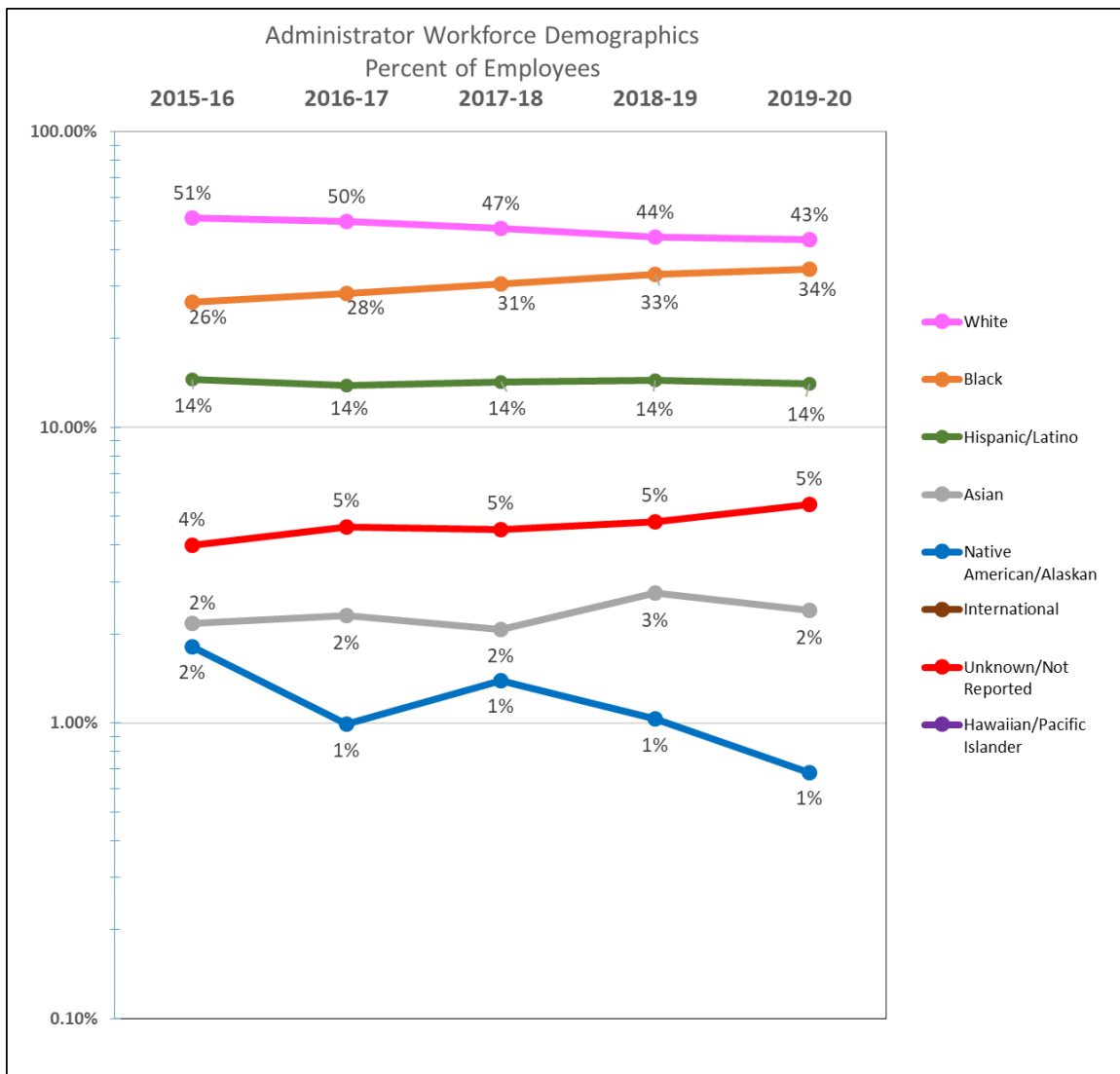
Johnny Duvall	Mountain View College
Instructor-Mathematics	<u>Effective Date:</u> August 31, 2020
<u>Length of Service:</u> 49 years	

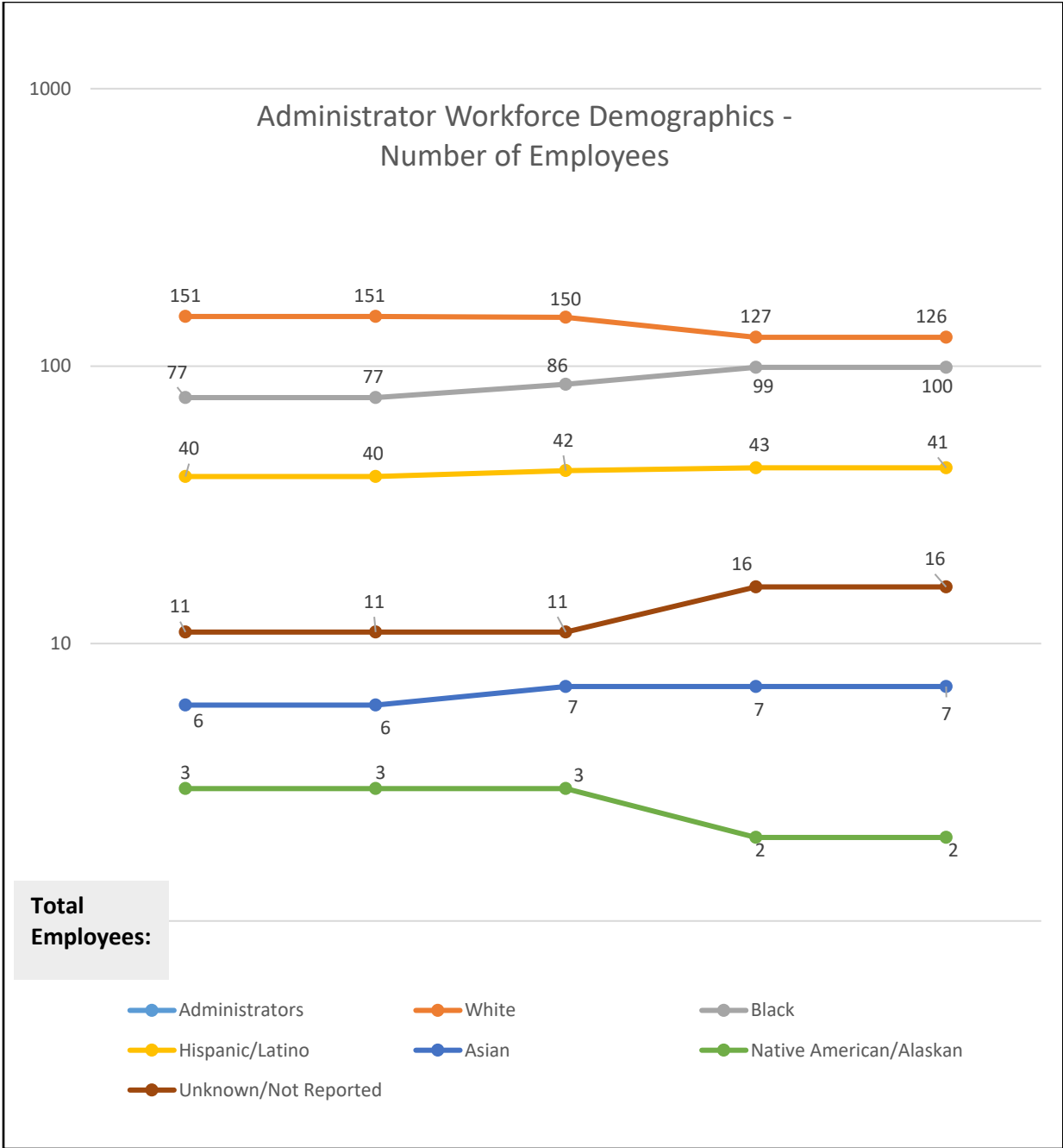
INFORMATIVE REPORT NO. 8H

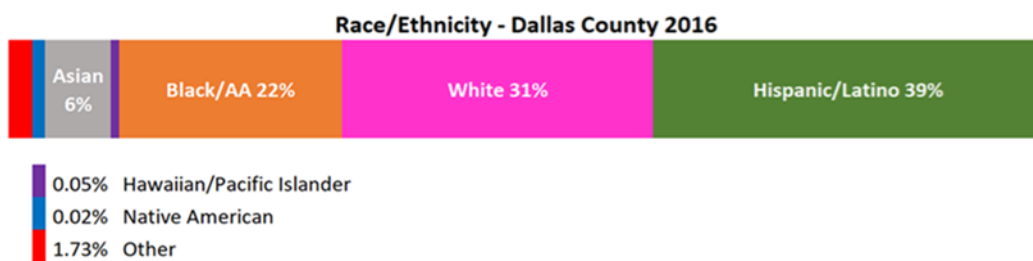
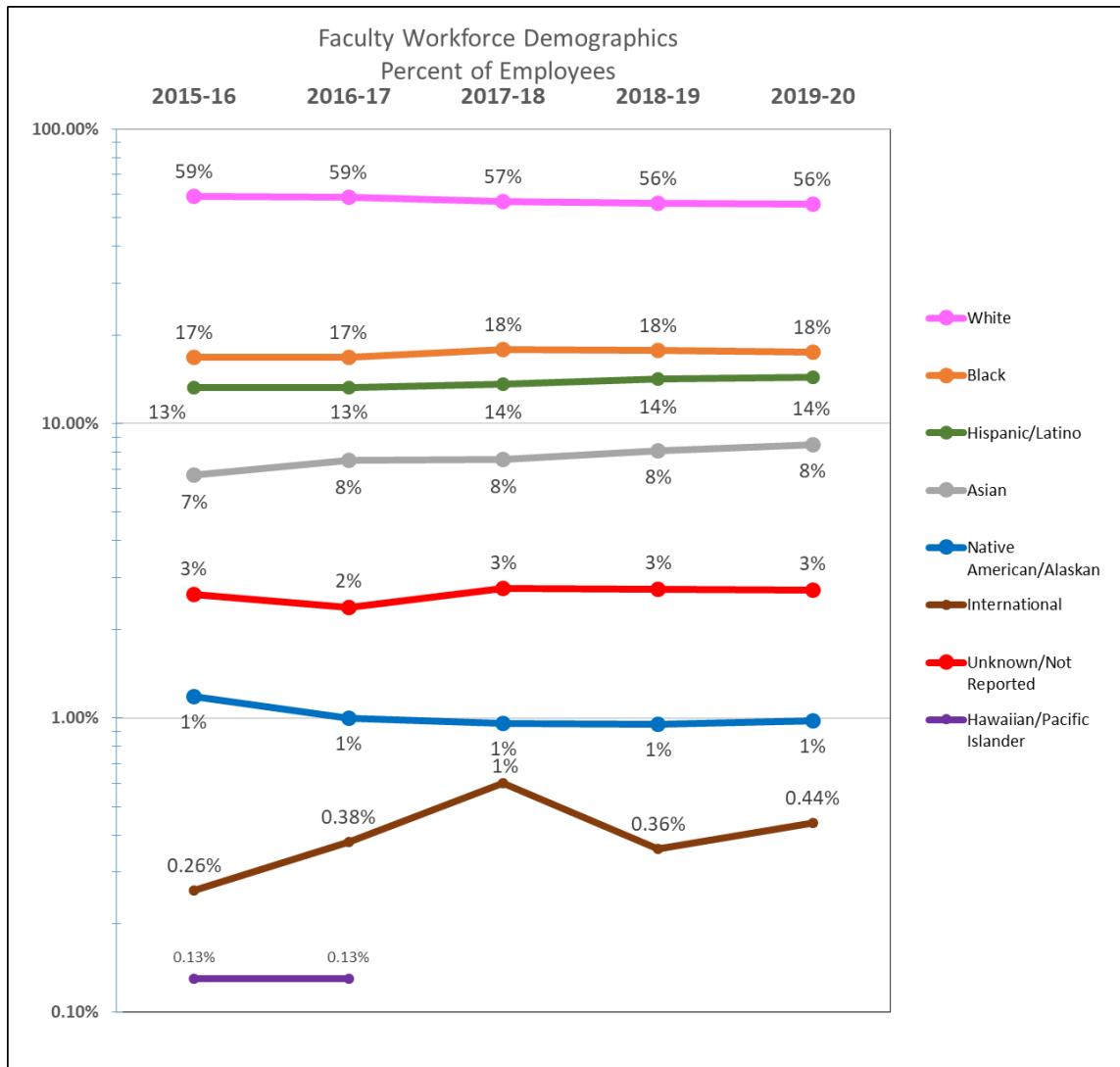
Workforce Demographics

The Chancellor presents the Workforce Demographics report as of February 29, 2020.

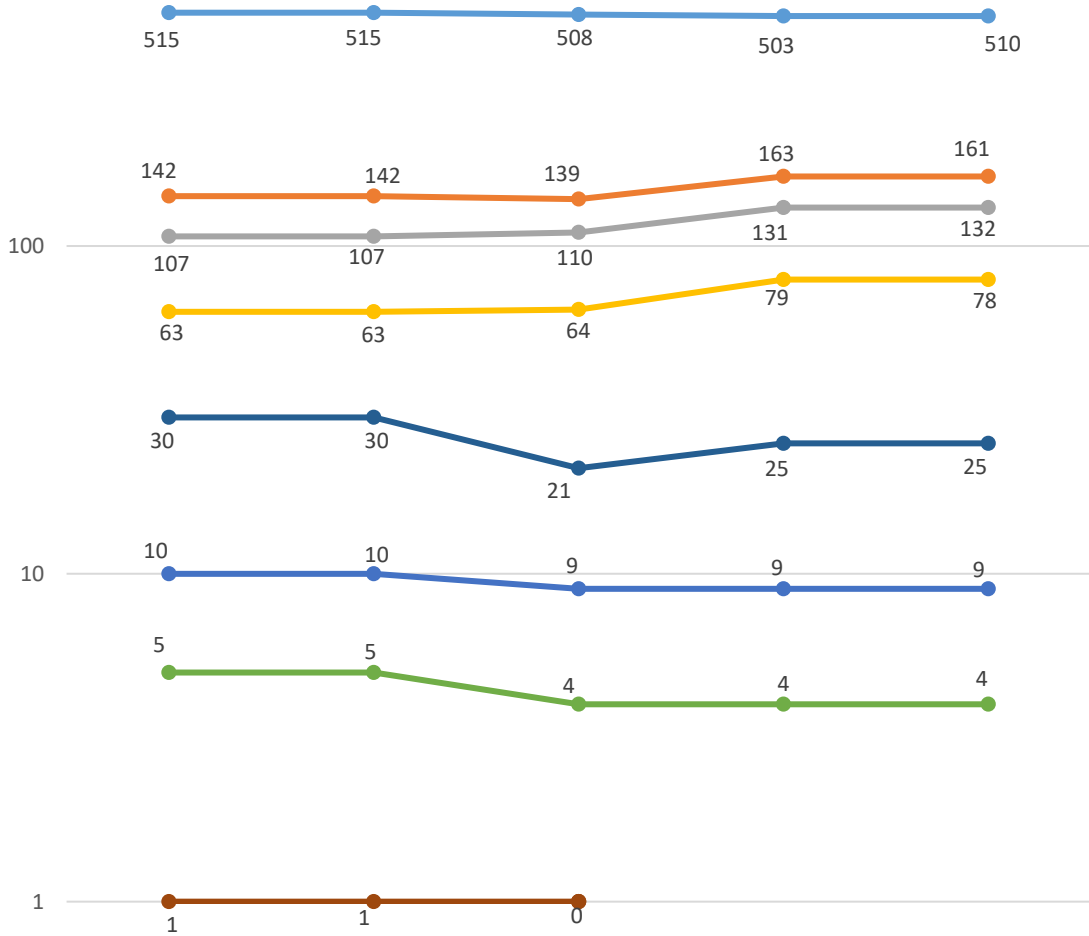
Workforce diversity continues to be a priority for the Dallas County Community College District, as reflected in the Board's strategic objectives. This report is designed to present workforce diversity information as a five-year trend analysis to provide a historic perspective on changes in the three major employee groups within the DCCCD.

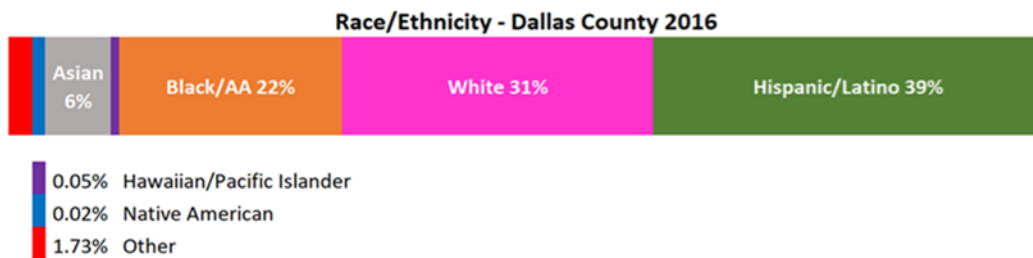
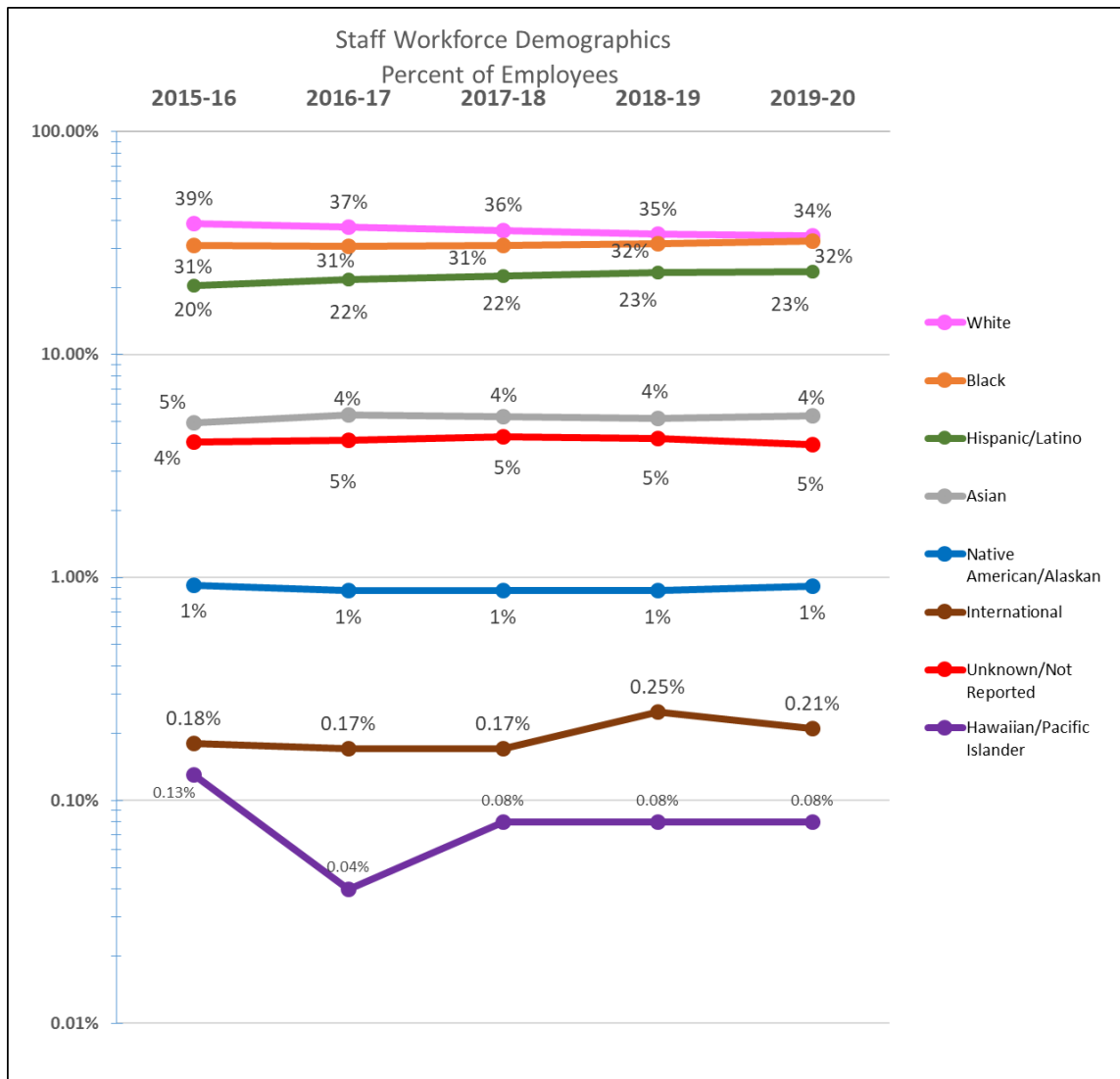




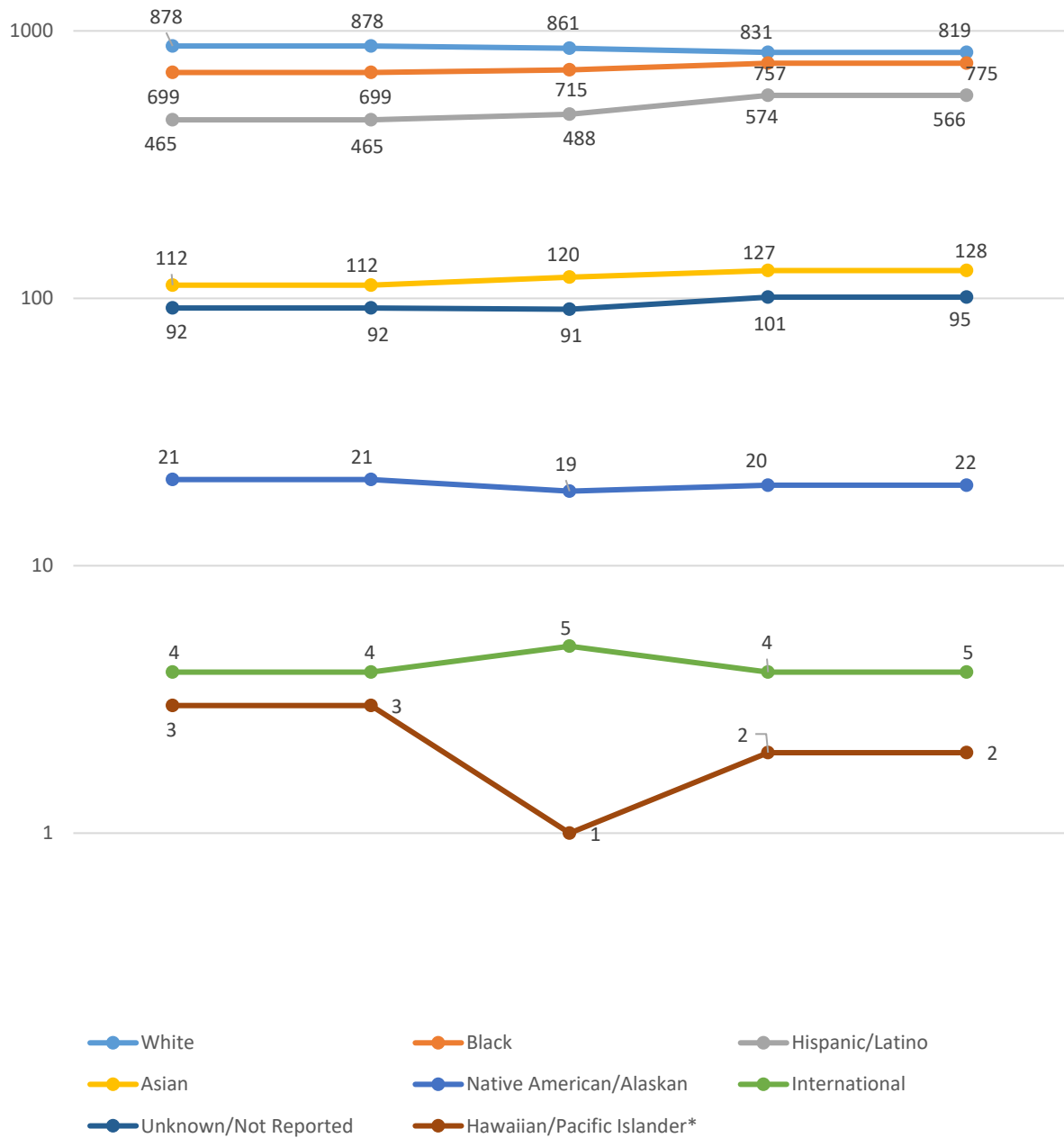


Faculty Workforce Demographics - Number of Employees





Staff Workforce Demographics - Number of Employees



*Pacific Islander included with Asian count prior to Fiscal Year 2012/2013

For the month ending: February 2020
Previous Year's Fiscal Data - Payroll a/o September 30th

Five Year Distribution: Full-Time Employees Only										
	Sep-16		Sep-17		Sep-18		Sep-19		2019-2020	
	#	%	#	%	#	%	#	%	#	%
<u>Administrators</u>										
White	151	52%	147	52%	128	50%	127	43%	126	43%
Black	77	27%	81	27%	87	29%	99	34%	100	34%
Hispanic/Latino	40	14%	42	14%	40	14%	43	15%	41	14%
Asian	6	2%	6	2%	6	2%	7	2%	7	2%
Native American/Alaskan	3	1%	3	1%	4	1%	2	1%	2	1%
International	0	0%	0	0%	0	0%	0	0%	0	0%
Unknown/Not Reported	11	4%	14	4%	15	4%	16	5%	16	5%
Hawaiian/Pacific Islander*	0	0%	0	0%	0	0%	0	0%	0	0%
Total	288	100%	293	100%	280	100%	294	100%	292	100%
<u>Faculty</u>										
White	515	59%	504	59%	498	59%	503	55%	510	56%
Black	142	16%	146	16%	158	16%	163	18%	161	18%
Hispanic/Latino	107	12%	115	12%	121	13%	131	14%	132	14%
Asian	63	7%	66	7%	67	7%	79	9%	78	8%
Native American/Alaskan	10	1%	9	1%	8	1%	9	1%	9	1%
International	5	1%	4	1%	5	0%	4	0%	4	0%
Unknown/Not Reported	30	3%	23	3%	26	2%	25	3%	25	3%
Hawaiian/Pacific Islander*	1	0%	1	0%	0	0%	0	0%	0	0%
Total	873	100%	868	100%	883	100%	914	100%	919	100%
<u>Staff</u>										
White	878	39%	840	39%	865	37%	831	34%	819	34%
Black	699	31%	701	31%	737	31%	757	31%	775	32%
Hispanic/Latino	465	20%	490	20%	538	21%	574	24%	566	23%
Asian	112	5%	125	5%	124	5%	127	5%	128	5%
Native American/Alaskan	21	1%	20	1%	20	1%	20	1%	22	1%
International	4	0%	4	0%	4	0%	4	0%	5	0%
Unknown/Not Reported	92	4%	94	4%	100	4%	101	4%	95	4%
Hawaiian/Pacific Islander*	3	0%	2	0%	2	0%	2	0%	2	0%
Total	2274	100%	2276	100%	2390	100%	2416	100%	2412	100%
Grand Total	3435		3437		3553		3624		3623	

*Pacific Islander included with Asian count prior to Fiscal Year 2012/2013

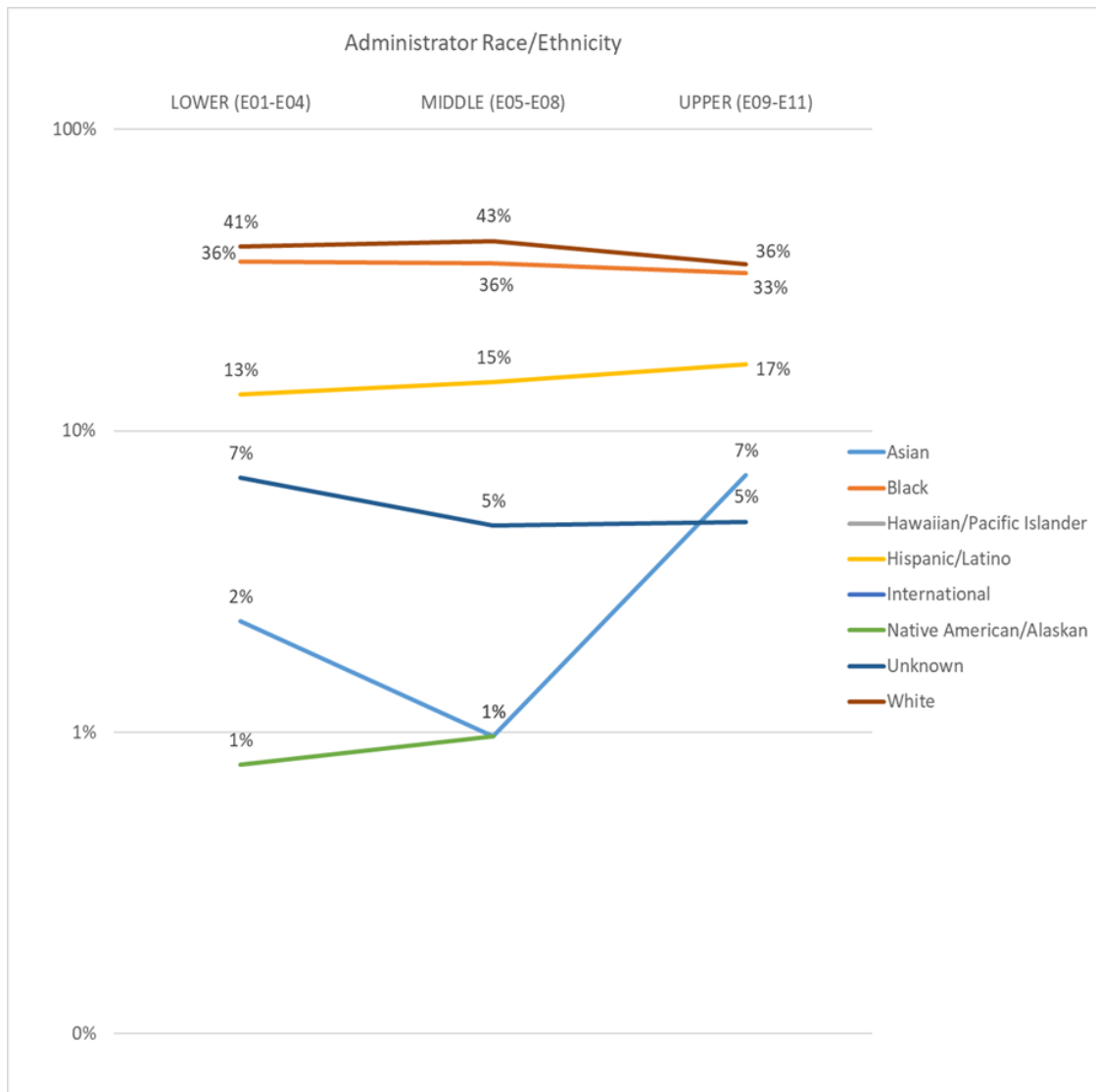
Note: Decrease in Administrator positions is the result of positions in Bands I and II move to Staff positions effective 12/1/2015.

INFORMATIVE REPORT NO. 8I

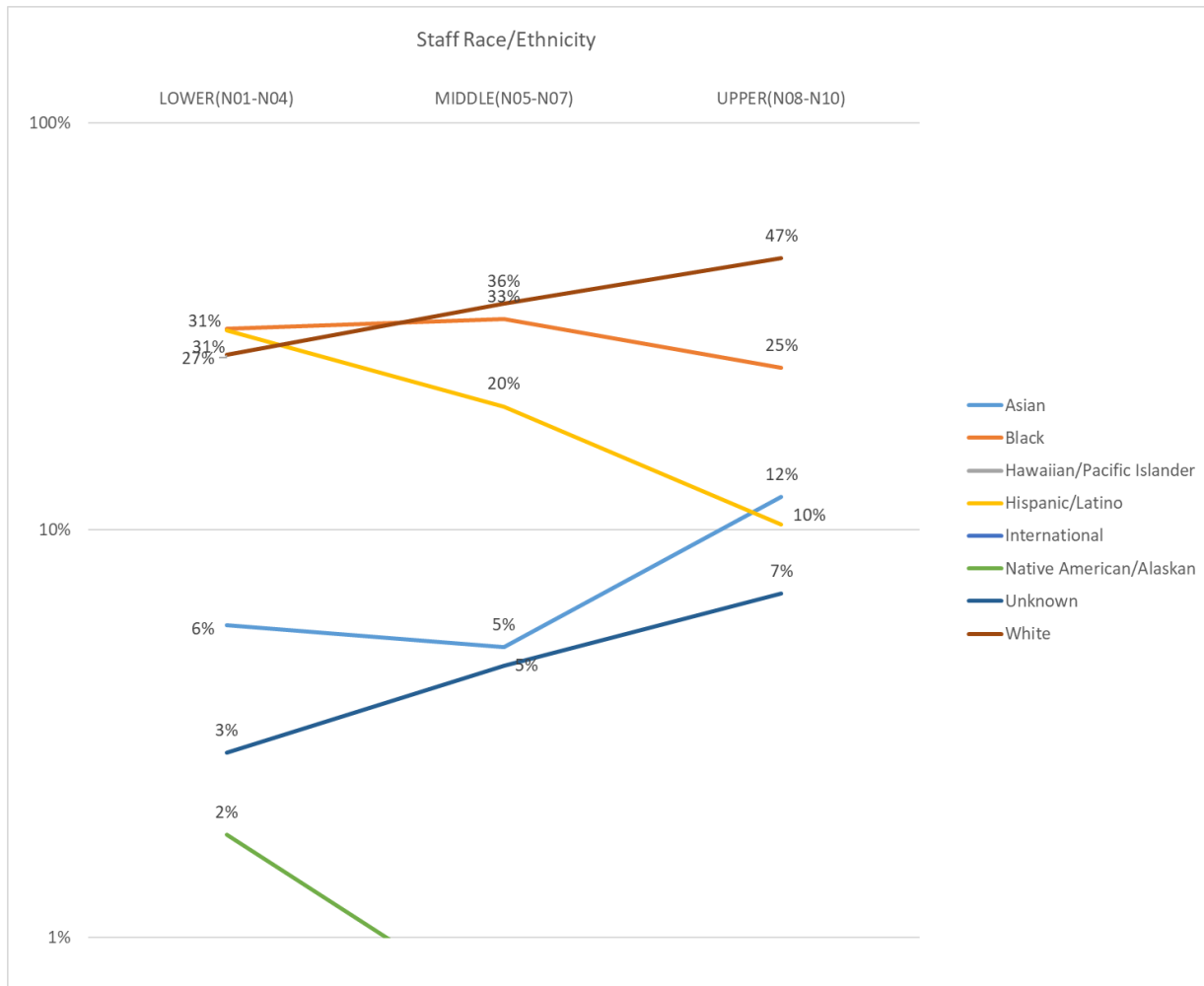
Workforce Demographics by Salary Range

The Chancellor presents the Workforce Demographics by Salary Range report as of February 29, 2020.

Workforce diversity continues to be a priority for the Dallas County Community College District, as reflected in the Board's strategic objectives. This report is designed to present workforce diversity information related to the race/ethnicity of staff and administrators across three (3) ranges - upper, middle and lower ranges as indicated below.



Race/Ethnicity	Lower (E01-E04)		Middle (E05-E08)		Upper (E09-E11)	
Asian	3	2%	1	1%	3	7%
Black	47	36%	37	36%	14	33%
Hawaiian/Pacific Islander	0	0%	0	0%	0	0%
Hispanic/Latino	17	13%	15	15%	7	17%
International	0	0%	0	0%	0	0%
Native American/Alaskan	1	1%	1	1%	0	0%
Unknown	9	7%	5	5%	2	5%
White	54	41%	44	43%	16	38%



Race/Ethnicity	Lower (N01-N04)		Middle (N05-N07)		Upper (N08-N10)	
Asian	38	6%	80	5%	7	12%
Black	211	31%	498	33%	15	25%
Hawaiian/Pacific Islander	1	0%	1	0%	0	0%
Hispanic/Latino	207	31%	311	20%	6	10%
International	2	0%	3	0%	0	0%
Native American/Alaskan	12	2%	10	1%	0	0%
Unknown	17	3%	71	5%	4	7%
White	182	27%	558	36%	28	47%